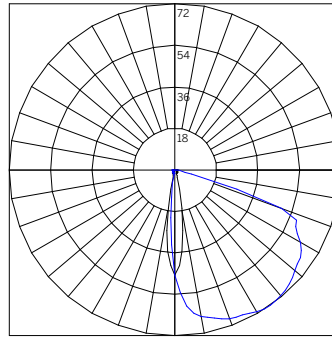
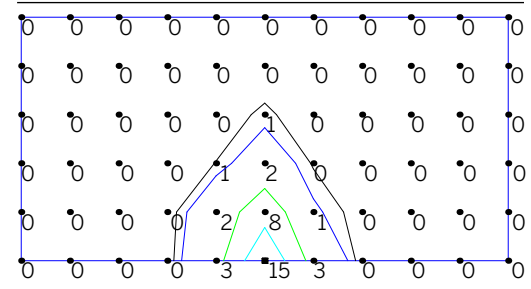


<b>CUT-RWH-F-...-BL...</b>		Delivered Lumens - Blade	
		<b>Diameter [Wattage]</b>	
		26 [2 CC]	
<b>CCT</b>	27-	26	
	30-	28	
	40-	30	
		<b>Polar Plot / Cone Of Light Multiplier</b>	
		26 [2 CC]	
		1.00	



Beam Angle (0-180) = Asymmetric  
Beam Angle (90-270) = Asymmetric

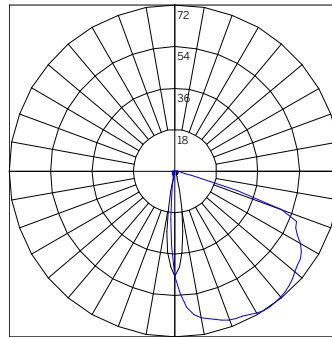
**ISOILLUMINANCE DIAGRAM - 2W 3000K Blade<sup>1</sup>**  
**CUT-RWH-F-26-2-CC-30-BL<sup>2</sup>**



Value [Fc]	Color	Value [Fc]	Color
0.5	Black	15	Red
1	Blue	20	Magenta
5	Green	25	Dark Blue
10	Cyan	30	Dark Green

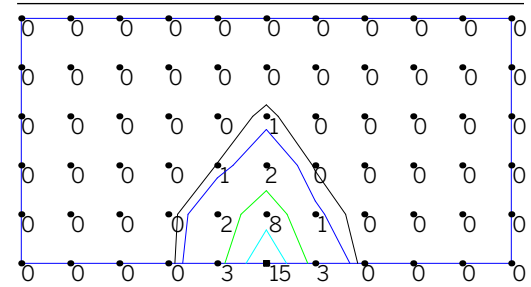
- 1 Illuminance values in foot-candles for the fixture part number noted. Illuminance points spaced 1'-0" on center.
- 2 Fixture is mounted 1'-0" above the illuminated surface.

<b>CUT-SWH-F-...-BL...</b>		Delivered Lumens - Blade	
		<b>Diameter [Wattage]</b>	
		28 [2 CC]	
<b>CCT</b>	30-	26	
	40-	28	
	50-	30	
		<b>Polar Plot / Cone Of Light Multiplier</b>	
		28 [2 CC]	
		1.00	



Beam Angle (0-180) = Asymmetric  
Beam Angle (90-270) = Asymmetric

**ISOILLUMINANCE DIAGRAM - 2W 3000K Blade<sup>1</sup>**  
**CUT-SWH-F-28-2-CC-30-BL<sup>2</sup>**



Value [Fc]	Color	Value [Fc]	Color
0.5	Black	15	Red
1	Blue	20	Magenta
5	Green	25	Dark Blue
10	Cyan	30	Dark Green

- 1 Illuminance values in foot-candles for the fixture part number noted. Illuminance points spaced 1'-0" on center.
- 2 Fixture is mounted 1'-0" above the illuminated surface.