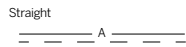
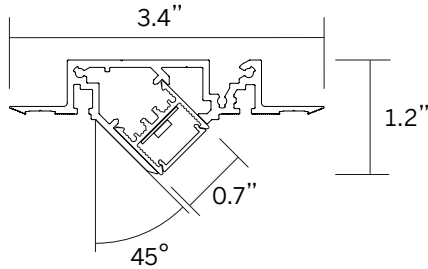


# 20 Linear Plaster-in Semi-Recessed Wallwash LED Specifications



## Ordering Information

| Model       | Type | Length | LED <sup>2</sup> | Color <sup>3</sup>                                   | Voltage                            | Power                                   | Diffuser       | Mount | Options                             |
|-------------|------|--------|------------------|--|------------------------------------|---|----------------|-------|-------------------------------------|
| WG-SRP20LWW | S    | A      | L<br>M           | 827<br>830<br>835<br>840<br>927<br>930<br>935<br>940 | UNV<br><br><br><br><br><br><br>120 | S<br>D010<br>D3W<br>DES<br><br><br>DFPN | OD (std)<br>SD | P     | C4 (std)<br>C10<br>C20<br>C30<br>DL |

### Luminaire

- Continuous, evenly illuminated snap-in lens without visible LED pattern.
- Standard Opal Diffuser for even illumination and no LED appearance. Satin Diffuser for high efficiency and minimal LED appearance.
- Field replaceable LED boards.
- 80+ CRI, 3 steps MacAdam.
- Lengths factory cut to exact field dimensions.
- Powder coat painted white - RAL 9010.
- 4' class 2 plenum rated feed cable standard (Options – "C4").

### Type

- S = Straight run

### Length

- A = specify feet & inches to the nearest 0.25" (i.e. 6' 5.5")

### LED<sup>2</sup>

- L = Low Power (3.2W/ft)
- M = Mid Power (6.4W/ft)

### Color / Lumens<sup>3</sup>

- 80+ CRI minimum (Low/Mid)
- 827 = 2700K (316/534 lm/ft)
- 830 = 3000K (343/579 lm/ft)
- 835 = 3500K (343/579 lm/ft)
- 840 = 4000K (355/601 lm/ft)
- For 90+ CRI specify 927, 930, etc.

### Voltage

- UNV = 120 - 277V
- 120 = 120V (DFPN only)

### Power Supply (remote)<sup>4</sup>

- S = standard driver 120-277V
- D010 = 10%, 0-10V dimming, 120-277V
- D3W = Lutron, 1%, 3-wire dimming, 120-277V
- DES = Lutron, 1%, EcoSystem E1/E2 digital dimming, 120-277V
- DFPN = Lutron 1% forward phase with neutral, 120V only

### Diffuser

- OD = Opal diffuser (standard)
- SD = Satin diffuser

### Mounting

- P = Plaster-in

### Options

- C4 = 4' tray cable (plenum rated) (standard)
- C10 = 10' tray cable (plenum rated)
- C20 = 20' tray cable (plenum rated)
- C30 = 30' tray cable (plenum rated)
- Contact factory for emergency lighting options
- DL = Damp location
- To specify multiple options select the appropriate grouped codes from the dropdown e.g.. C10-DL

- Wattage shown does not include power supplies/drivers.
- Delivered lumens with satin diffuser shown. Lumens for CRI 90(+), are about 16% lower compared to standard CRI 80(+).
- Remote power supply required. See power supply page for details.

# 20 Linear Plaster-in Semi-Recessed Wallwash LED Dimensions

