

20 Linear Wash Light Semi-Recessed

- Semi-Recessed Wash Light for even illumination of walls, ceilings and floors.
- Trimless and bezel trim for seamless integration into any drywall, wood and metal surfaces.
- Trimless installation into drywall without disturbing the ceiling or wall structure.
- Straight runs in exact lengths as specified.
- 90+ CRI, 3 Steps MacAdam delivering excellent color rendering.
- Choice of White, RGBW and Warm Dim to emulate incandescent.
- Identical LED technology used throughout all Whitegoods Linears, Coves and Perimeter products deliver consistent quality and performance throughout a project.
- Made in USA.
- 5-year warranty.

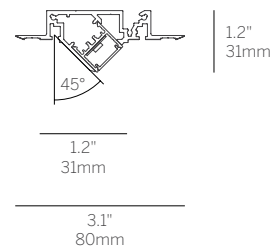
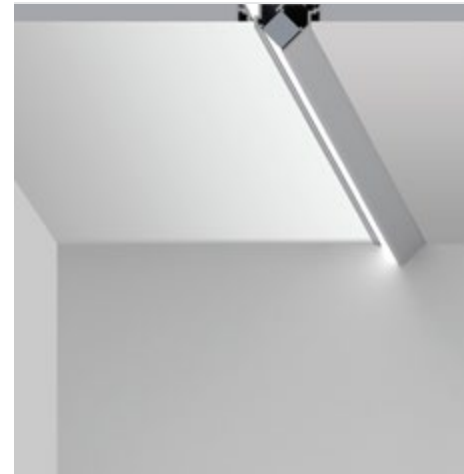
Housing	Precision extruded aluminum for true dimensions and tolerances All low voltage connections are made in the housing Luminaire snaps into the housing without tools Finishes: white, black, silver and custom
Integration	Fixation into gypsum, hard ceilings and all grid ceiling types
Distribution	Even wash of light
LED	Constant Voltage, 90+ CRI, 3 Steps MacAdam 120 nominal lumens/watt average (see spec sheet for delivered lumens) Conformal coated for protection against humidity optional (-WL) Warm Dim to emulate incandescent when dimming; 75 nominal lumens per watt average RGBW for color changing applications; 50 nominal lumens per watt average L70 (TM21 Projected 85C) Static White = 60,000 hours RGBW = 50,000 hours, WD = 36,000 hours
Lens	OD - Opal Diffuser provides even, continuous line of light and general illumination SD - Satin Clear Diffuser provides high efficiency soft edge beam, general illumination MPL - Micro-prismatic lens provides lower brightness, general illumination
Driver	Compatible with quality constant voltage drivers
Weight	1lbs per foot
Operating Temp	Suitable for operation in maximum ambient temperature of 35C (95F)
Warranty	5-year Limited (see complete company warranty information)
Certifications	ETL and ETL-C for dry and damp location, CE
Voltages	24V Fixture / 120-277VAC Driver (remote)

Lenses/Accessories

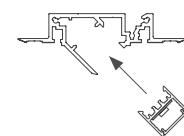
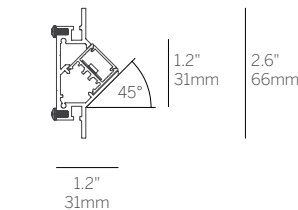
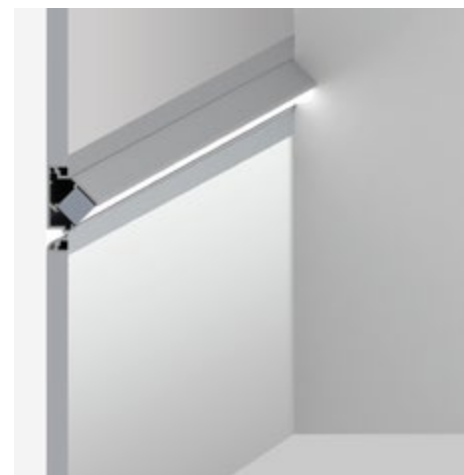


Opal Diffuser (OD)
Satin Diffuser (SD)
Micro-prismatic Lens (MPL)

Semi Recessed Plaster Trim (SRPT)



Semi Recessed Bezel Trim (SRBT)



20 Linear Wash Light Semi-Recessed

Model	Fixation	Pattern	Length	Power ²	CRI/CCT ³	Driver ⁴	Lens	Finish ⁵	Options
WG-20LWW	SRPT SRBT SRGT9 SRGT15	S PI ¹ PO ¹	A A x B A x B x C A x B x A x B	L M H	927 930 935 940 WD RGBW	X S D010 L3DAE L3DOE DFPN EL96 DMX	OD (std) SD MPL	W (std) B S F	EM WL ⁶

Model

- WG-20LWW = 20 Linear Wash Light Semi Recessed

Fixation

- SRPT = Semi recessed plaster trim
- SRBT = Semi recessed bezel trim
- SRGT9 = Semi recessed grid trim 9/16"
- SRGT15 = Semi recessed grid trim 15/16"

Pattern

- S = Straight run
- PI = Standard patterns 2, 3 or 4 sided with 90° inside corners on the same plane³
- PO = Standard patterns 2, 3 or 4 sided with 90° outside corners on the same plane³

Length

- A, B, C = specify inches to the nearest 0.25" (i.e. 72.25")
For patterns specify each length (i.e. 2 sided: A x B = 72.25" x 48"; 3 sided: A x B x C; 4 sided: A x B x A x B)
- For 2 and 4 foot fixtures to fit ceiling grids specify 24" and 48" lengths

Power²

- L = 3W/ft low power (WD 2.7 W/ft) (24V)
- M = 6W/ft mid power (WD 5.5 W/ft) (24V) (RGBW - 7.6 W/ft)
- H = 10W/ft high power (WD 8 W/ft) (24V)

CRI/CCT (90+ CRI)³

- 927 = 2700K
- 930 = 3000K
- 935 = 3500K
- 940 = 4000K
- WD = Warm Dimming 1800 - 3000K
- RGBW = 3000K White (M power only)

Driver (remote)⁴

- X = No driver, ordered separately
- S = Standard, non-dim driver 120-277V
- D010 = Osram, 10%, 0-10V dimming, 120-277V
- L3DAE = Lutron Hi-lume 1% EcoSystem, 120-277V
- L3DOE = Lutron Hi-lume Premier 0.1% EcoSystem, 120-277V
- DFPN = Lutron Forward Phase 1%, 120VAC
- EL96 = Osram / EldoLED, 24V, 0.1% 0-10V Dimming
- DMX = Osram / EldoLED, 24V, 0.1% DMX Dimming

Lens

- OD = Satin opal diffuser (standard)
- SD = Satin clear diffuser
- MPL = Micro-prismatic lens

Finish⁵

- W = White, 15% gloss, Tiger Drylac 49/11350 (standard)
- B = Black, 15% gloss, Tiger Drylac 44/90053
- S = Silver, 15% gloss, Tiger Drylac 49/90500
- F = Custom finished trim, specify RAL

Options

- EM = Emergency (remote)
- WL = Wet Location Under Canopy / Cover⁶

Whitegoods reserves the right to change any information without prior notice.

Notes

- 1 See pattern spec sheet.
- 2 Wattage shown is for LED boards only, system wattage varies depending on driver selected.
- 3 See spec page for delivered lumens.
- 4 Remote power supply required. See power supply page for details.
- 5 See Tiger Drylac color chart: inter-lux.com/tiger
- 6 Wet Location option available for OD / SD / MPL lenses and recessed / surface ceiling applications only.