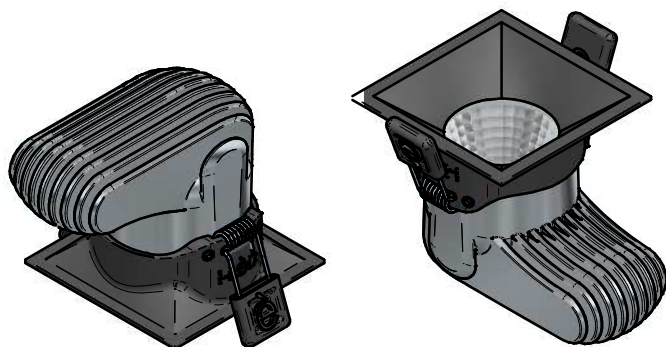


CODE CRI95	FINISH	POWER
E97940	WH	8W
E97941	BK	
E97944	GR	
E97945	OR	
CODE CRI80	FINISH	POWER
E97699	WH	8W
E97700	BK	
E97701	GR	
E97702	OR	

CODE CRI95	FINISH	POWER
E91753	WH	13W
E91754	BK	
E91755	GR	
E91756	OR	
CODE CRI80	FINISH	POWER
E91208	WH	13W
E91209	BK	
E91210	GR	
E91211	OR	



## Finishes

EMBOSSSED WHITE (WH)  
EMBOSSSED BLACK (BK)  
EMBOSSSED GREY (GR)  
GOLD (AU)

## Product Description

Dowlight for indoor installation, minimal flange made of cast aluminum then powder coated. Cast aluminum rear heat sink. Chromated reflector comes in three different optics (15°/30°/60°) that offers an excellent visual comfort (UGR<19). Front cover in transparent polycarbonate anti-UV which guarantees the IP65 in frontal side (IP44 total) and protects the LEDs from accidental contact and dust deposits. With 11,8" of cable red/blue. Power supply not included.

## Applications

Indoor Spotlight

## Power Led:

LED Cree CXA1507 CRI80/95 (8W)  
LED Cree CXA1512 CRI80/95 (13W)

## Resin: No

Cable type included: 11,8" 2X22AWG red/blue cables

Connector type: -

Input (V - mA) : See Tab.

Nominal power (W): See Tab.2

Real power (W): Nominal Power

Temperature on the surface of the glass: 40°

Adjustability: No

Drive over: No

Glow Wire: 850°

Power supply: Remote

Insulation class: Class 2

IP 65 front - IP44 total

IK 08

Weight: 0,86 Lbs

Volume: 73"³

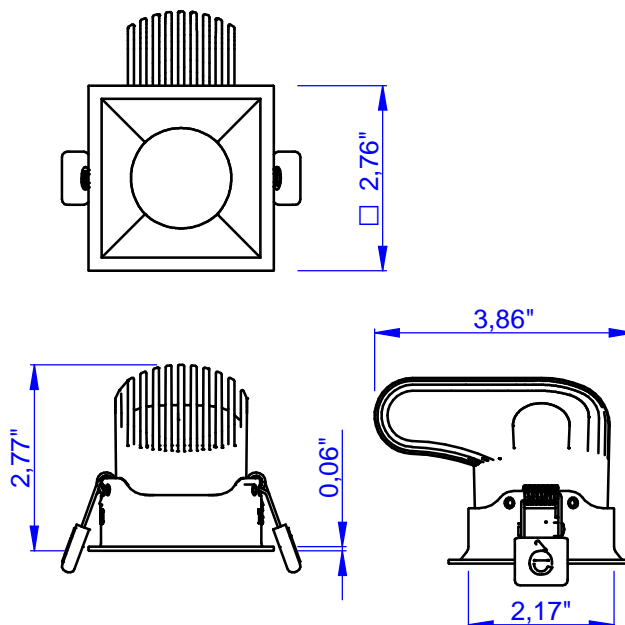


: OK



: OK

## Dimensions



Tab.2

Voltage (V)	Current (A)	Power (W)	
		Nominal	Real
36	0,22	8,00	8,80
36	0,35	12,6	13,5

LED White :  
4000K - 3000K - 2700K

Color LED :  
-

Optic :  
15° - 30° - 60°

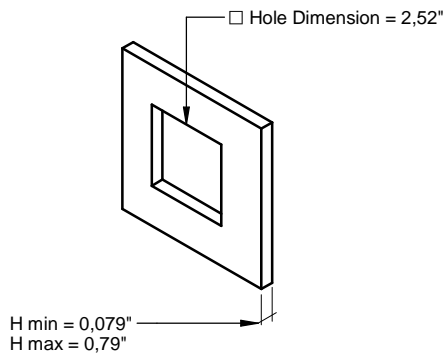
LED RGB :  
-

Optic :  
-

## Luminous flux

Led Type	POWER (W)	Lumen (NOMINAL)*		
		Natural White	Warm White	SuperWarm White
CXA CRI80	8	1038	1038	970
CXA CRI95	8	842	782	730
CXA CRI80	12,6	1520	1520	1421
CXA CRI95	12,6	1234	1146	1069

\*Value of the luminous flux from the LED data sheet.



THIS PRODUCT MUST BE INSTALLED IN ACCORDANCE WITH THE APPLICABLE INSTALLATION CODE BY A PERSON FAMILIAR WITH THE CONSTRUCTION AND OPERATION OF THE PRODUCT AND THE HAZARDS INVOLVED

READ ALL OF THESE INSTRUCTIONS BEFORE INSTALLING FIXTURES

- Keep all of the instructions for future reference
- Turn off power before installing fixture
- Installation is to be performed by a qualified electrician only
- All installations must conform to the National Electrical Code as well as all local jurisdictional codes and regulations
- Any modification of the luminaire will void any and all written or implied warranties
- The manufacture accepts no responsibility for damage to persons or property arising through improper use or installation

## Accessories

Accessory (1)	Accessory (2)	Accessory (3)	Accessory (4)

Accessory (1)

Accessory (2)

Accessory (3)

Accessory (4)