

# 100 Square Wall Wash 22 LED - Chicago Plenum/IC Specifications

inter•lux



## Ordering Information

Model	LED <sup>1,2</sup>	Power	Beam Angle	Voltage <sup>3</sup>	Power Supply <sup>4</sup>	Diffuser	Options
WG-P100SWW22 plaster-in	80 CRI CB-827 CB-830 CB-835 CB-840	L M H	30 50 91	UNV	S D010 D3W <sup>5</sup> DES <sup>5</sup>	CD FR (91° Beam Only) MP	CP IC
WG-B100SWW22 bezel trim	90 CRI CB-927 CB-930 CB-935 CB-940			120	DFPN <sup>5</sup>		

### Luminaire

- Bezel trim or trimless 'plaster-in' 4 x 4.4" Wall Wash (22.5° tilt) for drywall ceilings and tiles.
- Installation housing for Chicago plenum or insulated ceilings.
- 'Easy click' tool free installation of die-cast aluminum LED insert.
- Die-cast aluminum trim housing with heavy gauge galvanized steel yoke.
- Adjustable frosted diffuser (standard), other diffusers available (see diffusers).
- Powder coat painted white - RAL 9010.

### LED<sup>1,2</sup>

80+ CRI (Low/Medium/High Power)

- CB-827 = 2700K, 1852/2055/2478lm
- CB-830 = 3000K, 1852/2055/2478lm
- CB-835 = 3500K, 1963/2198/2670lm
- CB-840 = 4000K, 1963/2198/2670lm
- For 90+ CRI specify, CB-927, CB-930, etc. Approximately 15% less lumens than 80 CRI.
- For 95+ CRI specify, CB-F927, CB-F930, etc. Approximately 30% less lumens than 80 CRI.

### Power<sup>3</sup>

- L = Low Power, 11.9W @ 350mA
- M = Mid Power, 13.7W @ 400mA
- H = High Power, 17.4W @ 500mA

### Beam Angle

- 30 = 30° accent illumination
- 50 = 50° general illumination
- 91 = 91° general illumination

### Voltage

- UNV = 120-277V
- 120 = 120V

### Power Supply (remote)<sup>4</sup>

- S = Standard non-dim driver, 120-277V.
- D010 = EldoLED, 1%, 0-10V dimming, 120-277V.
- D3W = Lutron, 1%, 3-wire dimming, 120V-277V.<sup>5</sup>
- DES = Lutron, 1%, EcoSystem E1/E2 digital dimming, 120-277V.<sup>5</sup>
- DFPN = Lutron 1% forward phase with neutral, 120V only.<sup>5</sup>

### Diffuser (frosted diffuser standard)

- CD = Clear Diffuser
- FR = Frosted Diffuser
- MP = Micro Prismatic Diffuser

### Emergency

- Emergency LED driver available, order separately.

### Options

- CP = Chicago Plenum Housing
- IC = Insulated Ceiling Housing
- NC = New Construction Plates available, consult factory.

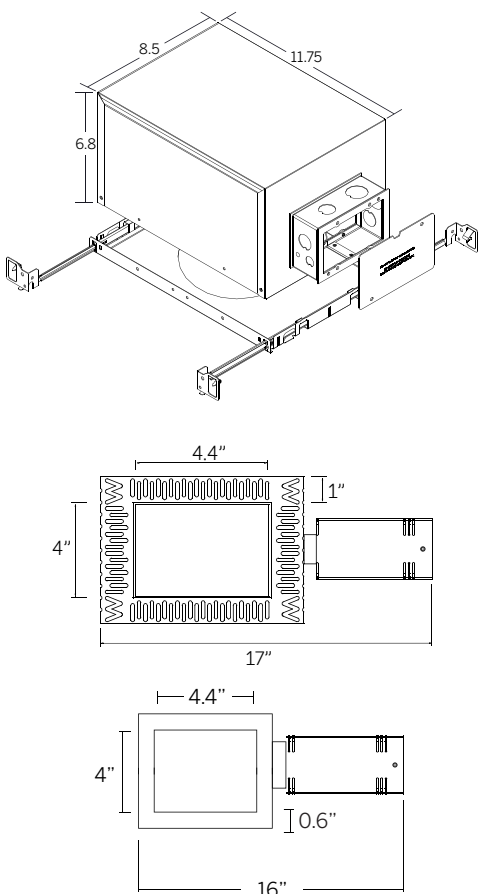
<sup>1</sup> Other lumen packages available, consult factory.

<sup>2</sup> See LED data sheet for delivered lumens.

<sup>3</sup> Wattage shown does not include power supplies/drivers. System wattage adds 10-20%.

<sup>4</sup> See power supply page for details.

<sup>5</sup> Consult factory for lead-times.

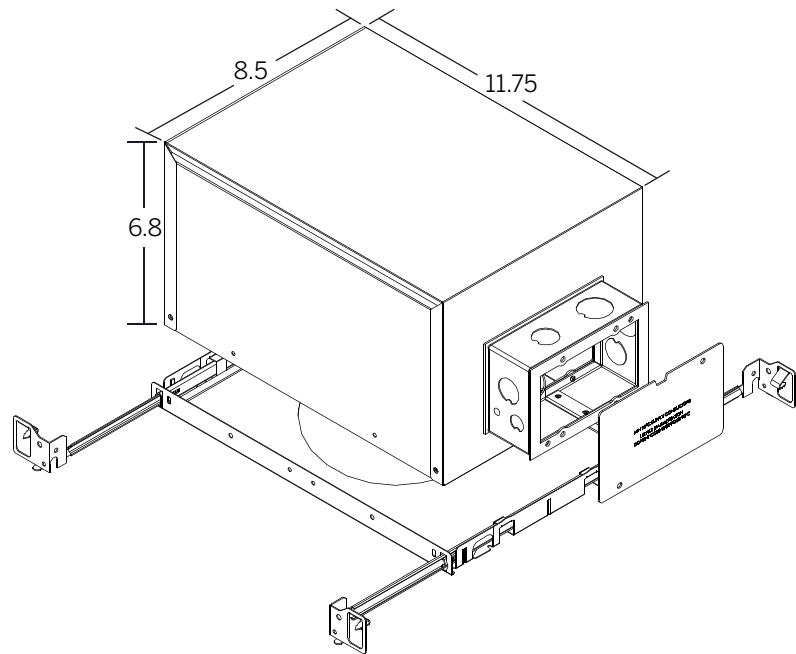


cut-out dimensions 5" x 4.7"

whitegoods

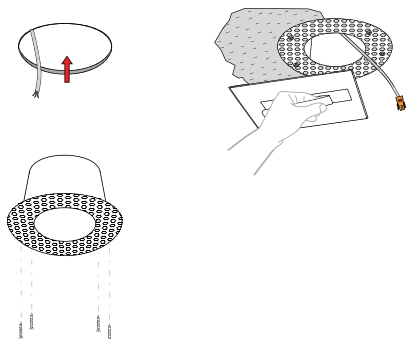


# 100 Square Wall Wash 22 LED - Chicago Plenum/IC Dimensions

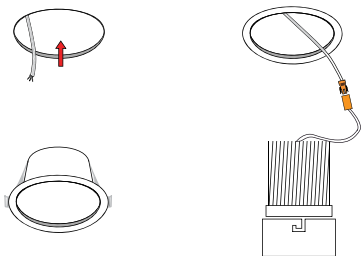


<sup>1</sup>Connectors included. Class II low voltage wire supplied by others. See power supply page for details.

### Plaster-in instructions



### Bezel instructions



# 100 Square Wall Wash 22 LED - Chicago Plenum/IC Power Supplies



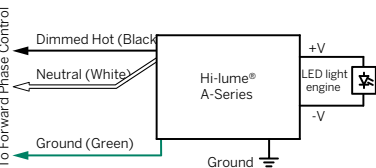
S (Standard non-dim)



D010 (EldoLED 0-10V)

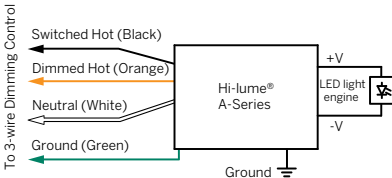


DFPN (Lutron forward phase with neutral)

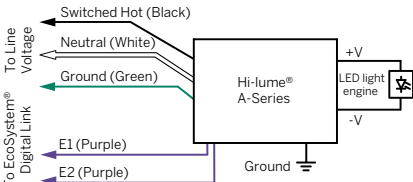


Note: Colors shown correspond to terminal blocks on driver.

DW3 (Lutron 1%, 3-wire)



DES (Lutron EcoSystem® digital)



Note: Colors shown correspond to terminal blocks on driver.

Note: Colors shown correspond to terminal blocks on driver.