


## S20LDL – Suspended 20 Linear


### Installation Instructions

Page 1

- Read entire instruction before beginning installation.
- Keep all instructions for future reference.
- Any modification of the luminaire voids any and all written or implied warranty.
- Manufacturer accepts no responsibility for damage to persons or property arising through installation or use.

 • Risk of Fire/Electric Shock. Disconnect power at fuse or circuit breaker before installing. Failure to do so may result in personal serious injury.

 • Risk of Fire/Electric Shock. Fixture must be installed in accordance with local and/or National Electrical Code.

 • Installation and maintenance should only be performed by a qualified electrician.

### Unpacking Instructions

Before you begin, please un-pack, identify and inspect all components. Per the TERMS AND CONDITIONS OF SALE, please contact Inter-lux if any items are found to be damaged or missing.

Fixtures will be packaged in multi-pack boxes or individually for smaller quantities. Individual fixtures are identified similar to:

#### Fixture

**SM20LDL-S-46800-M-835-OD**

#### Description

**SM20LDL Housing Assembly, Straight, 46.800", Mid Power, 80 CRI, 3500K, Opal Diffuser**



In addition to box labels, each fixture will be individually labeled on the back as shown:

Once all items are identified and sorted, proceed to installation steps.

**Technical Support Line (410) 381-1497**

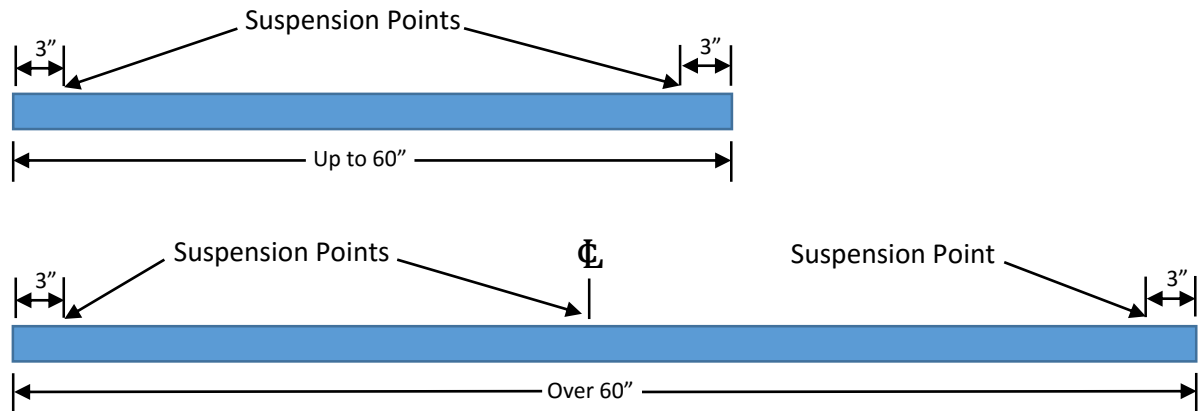
# S20LDL – Suspended 20 Linear

## Installation Instructions

Page 2

### Installation Instructions

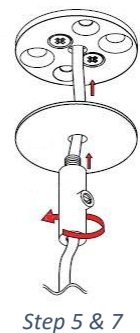
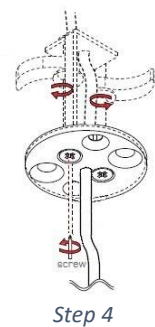
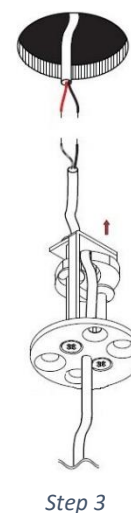
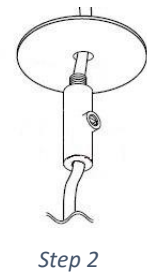
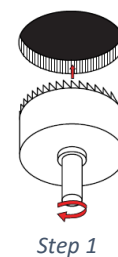
Mark the position of the fixture suspension points. See diagram below:



### Plasterboard and Tile / Panel Ceilings

**NOTE:** Maximum ceiling thickness of 1-3/8 (35mm).

1. Cut out a 1-1/4" (32mm) hole at the suspension point on each end of the fixture.
2. Feed the suspensions cable through the bezels and the cable restrainers.
3. Route the low voltage power feed cable from the fixture through the mount. Make the electrical connections to the driver.
4. Secure to the ceiling by tightening the captive screws. This will lower and lock the claws onto the ceiling.
5. Slide the bezel and cable restrainer up and screw into the mount. Adjust the cable length to the desired fixture height and secure by snugging the plastic set screw in the cable restrainer.
6. Route the other end suspension cable through the second mount. Following the same steps above, level the fixture and snug the plastic set screw.
7. *Fixtures longer than 60":* Install the center suspension by mounting the ceiling plate on the center mark. Slide the bezel and cable restrainer up and screw into the mount plate. Level the fixture and trim the suspension cable to desired length. Snug the plastic set screw to secure in place.



# S20LDL – Suspended 20 Linear

## Installation Instructions

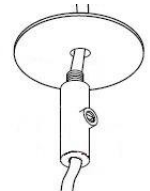
Page 3

### Solid (Concrete, Wood, Metal) Ceilings

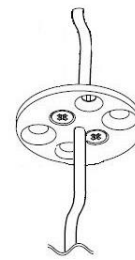
1. Drill a hole for the low voltage power feed or be sure a conduit is in place for installation.
2. Feed the suspensions cable through the bezels and the cable restrainers.
3. Route the low voltage power feed cable from the fixture through the mount. Make the electrical connections to the driver. Mount the plate to the ceiling as shown.
4. Slide the bezel and cable restrainer up and screw into the mount. Adjust the cable length to the desired fixture height and secure by snugging the plastic set screw in the cable restrainer.
5. Route the other end suspension cable through the second mount. Following the same steps above, level the fixture and snug the plastic set screw.
6. *Fixtures longer than 60"*: Install the center suspension by mounting the ceiling plate on the center mark. Slide the bezel and cable restrainer up and screw into the mount plate. Level the fixture and trim the suspension cable to desired length. Snug the plastic set screw to secure in place.



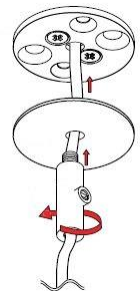
Step 1



Step 2



Step 3



Step 4