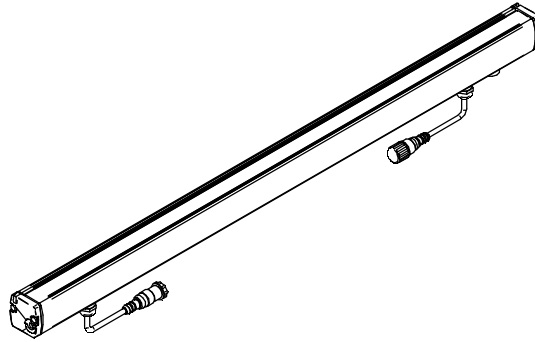
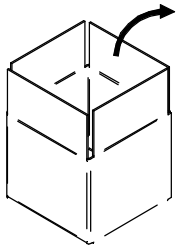


**XENIA_W****WARNING:**

INSTALL PRODUCT IN ACCORDANCE WITH LOCAL AND NATIONAL ELECTRICAL CODES BY A QUALIFIED ELECTRICIAN

**WARNING:**

FAILURE TO COMPLY WITH THE INSTALLATION INSTRUCTIONS MAY RESULT IN DEATH OR SEVERE INJURY.

**WARNING:**

READ ALL SAFETY INSTRUCTIONS INCLUDED WITH LUMINAIRE BEFORE INSTALLING LUMINAIRE. SAVE INSTRUCTIONS FOR FUTURE USE.

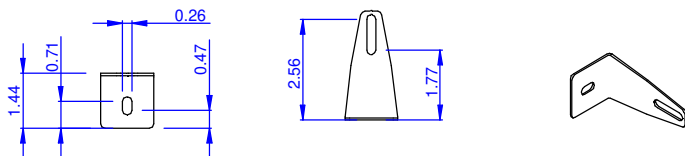
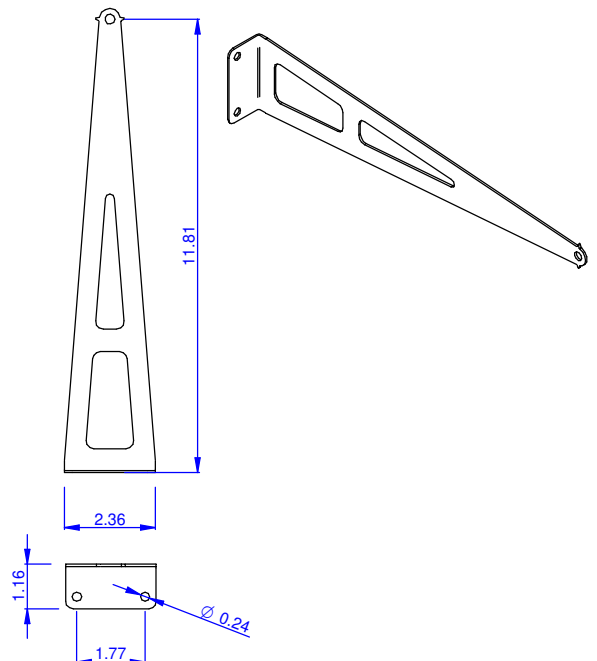
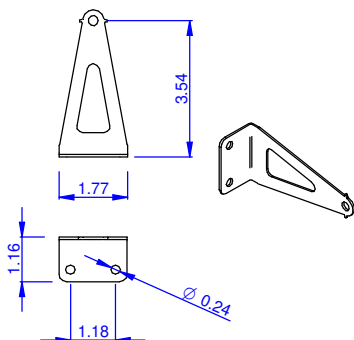
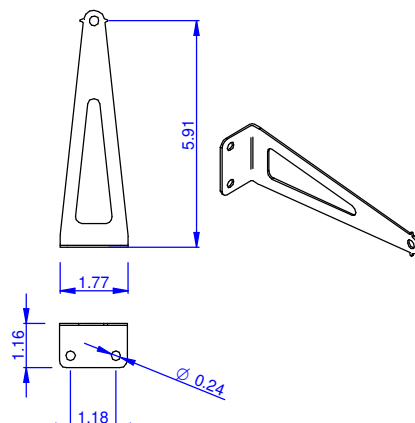
CAUTION:

THIS IS AN ELECTRONIC DEVICE. CARE MUST BE TAKEN DURING STORAGE AND HANDLING. STORE IN A CLEAN, COOL AND DRY LOCATION. ELECTROSTATIC DISCHARGE (ESD) CAN HARM THIS PRODUCT. AVOID STATIC DISCHARGE WHILE HANDLING THIS PRODUCT.

CAUTION:

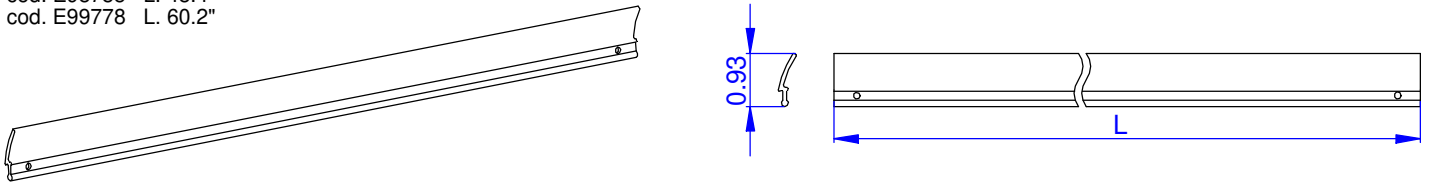
INTER-LUX IS NOT RESPONSIBLE FOR THE STRUCTURAL INTEGRITY OF THE BUILDING TO SUPPORT THE LUMINAIRE. ADDITIONAL BACKING MAY BE REQUIRED.

LOCATE AND REVIEW ANY CONSTRUCTION PLANS AND INTER-LUX RECORD DRAWINGS FOR ALL FIXTURE RUNS. IT IS RECOMMENDED TO LOCARE AND LAY OUT ALL COMPONENTS FOR EACH FIXTURE "RUN". A FIXTURE RUN TYPICALLY CONSISTS OF JOINERS, LENGHTS OF HOUSING, AND ENDCAPS. BE SURE TO IDENTIFY ALL CORRECT LENGHTS FOR EACH FIXTURE RUN.

INSTALLATION INSTRUCTIONS**STEEL FIXING BRACKETS****A) E98949****D) E89047****B) E89045****C) E89046**

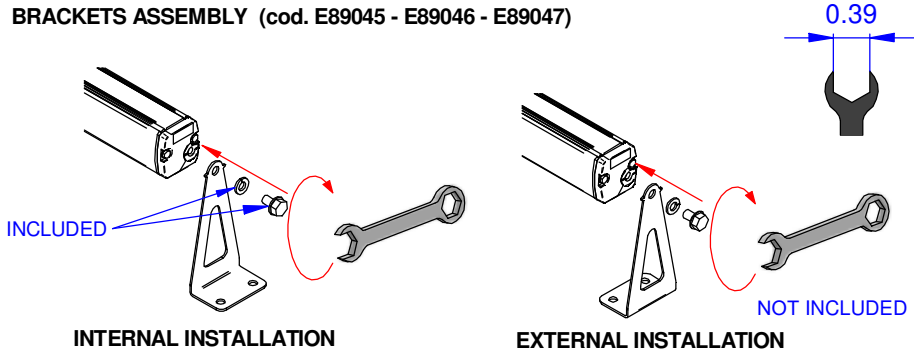
ANTI-GLARE ACCESSORY

cod. E98782 L. 14.4"
cod. E98783 L. 24.8"
cod. E98784 L. 36.6"
cod. E98785 L. 48.4"
cod. E99778 L. 60.2"

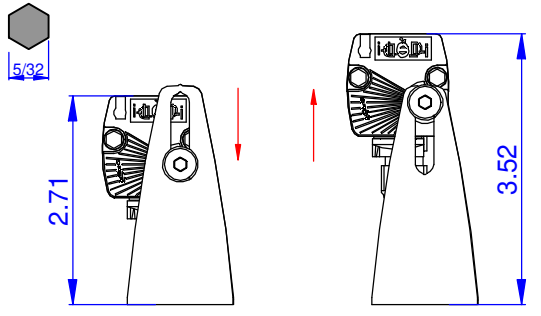


INSTALLATION INSTRUCTIONS

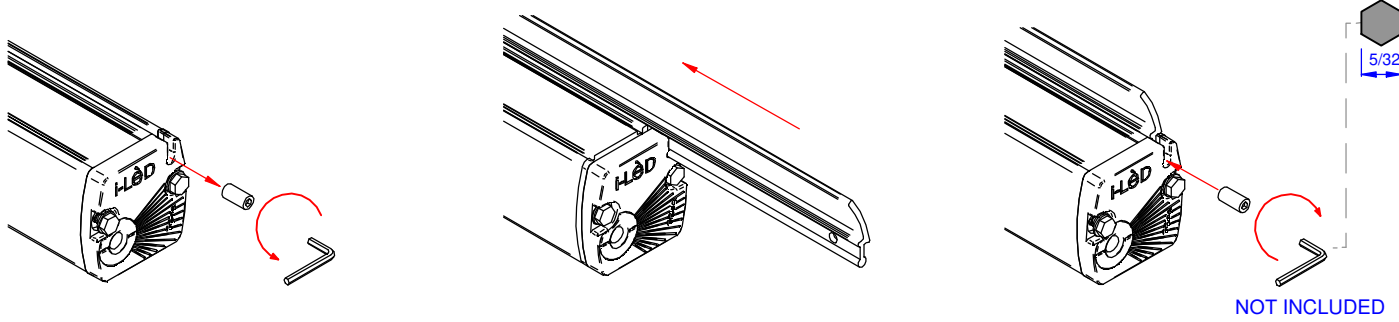
BRACKETS ASSEMBLY (cod. E89045 - E89046 - E89047)



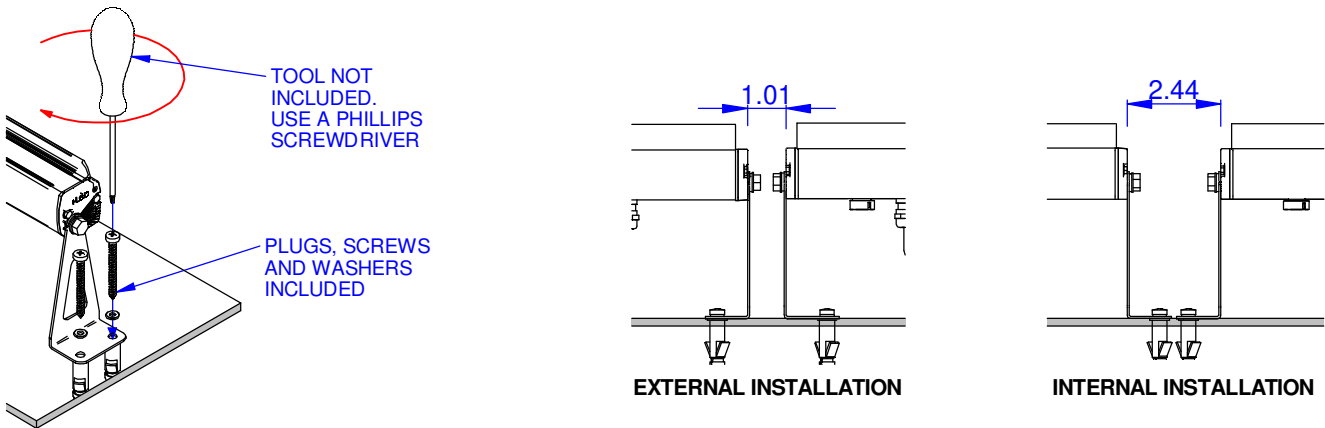
BRACKETS ASSEMBLY (cod. E98949)



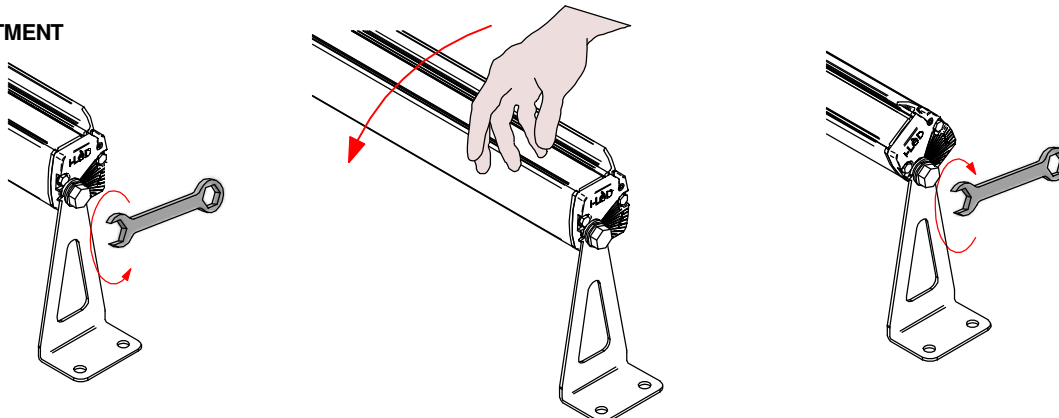
ANTI-GLARE ASSEMBLY



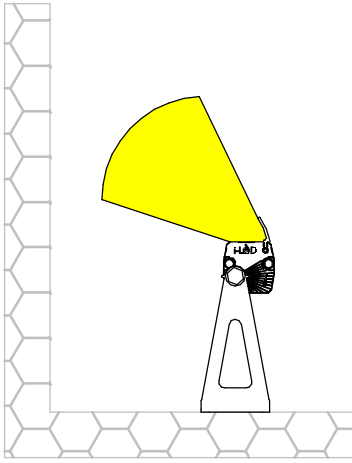
XENIA_W INSTALLATION



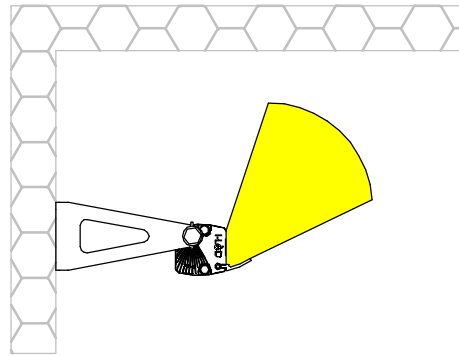
TILT ADJUSTMENT



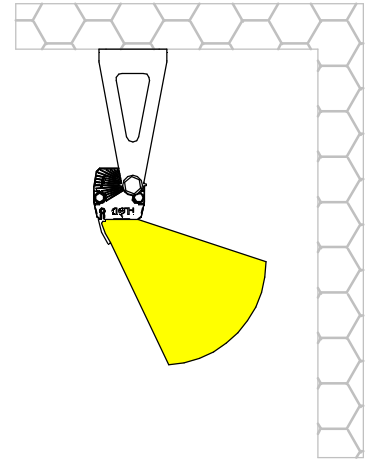
INSTALLATION POSITION



FLOOR INSTALLATION



WALL INSTALLATION



CEILING INSTALLATION

THIS PRODUCT MUST BE INSTALLED IN ACCORDANCE WITH THE APPLICABLE INSTALLATION CODE BY A PERSON FAMILIAR WITH THE CONSTRUCTION AND OPERATION OF THE PRODUCT AND THE HAZARDS INVOLVED

MOUNTING INSTRUCTIONS

READ ALL OF THESE INSTRUCTIONS BEFORE INSTALLING FIXTURES

- CAUTION: USE ONLY WITH CLASS 2 POWER UNIT
- Keep all of the instructions for future reference
- Turn off power before installing fixture
- Installation is to be performed by a qualified electrician only
- All installations must conform to the National Electrical Code as well as all local jurisdictional codes and regulations
- Any modification of the luminaire will void any and all written or implied warranties
- The manufacture accepts no responsibility for damage to persons or property arising through improper use or installation

24Vdc REMOTE DRIVER

Wiring procedure



- 1 Switch off the main switch.
- 2 Connect the Xenia to the power supply unit.
- 3 Connect the power supply unit to the main line power.
- 4 Switch on the main switch.

N.B.

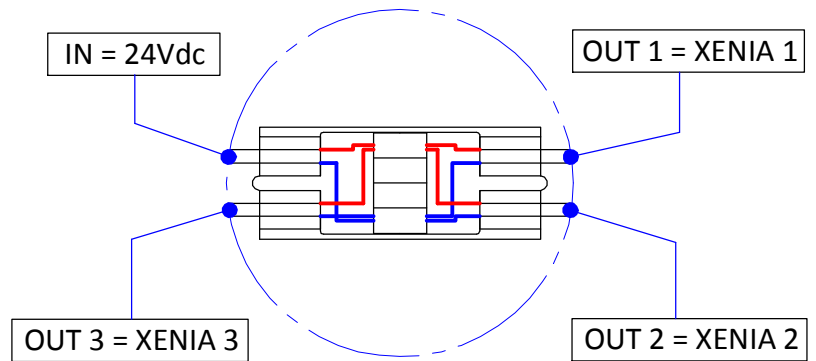
All maintenance and installation operations must be carried out with the main switch turned off

The Xenia must be powered at 24Vdc in constant voltage.

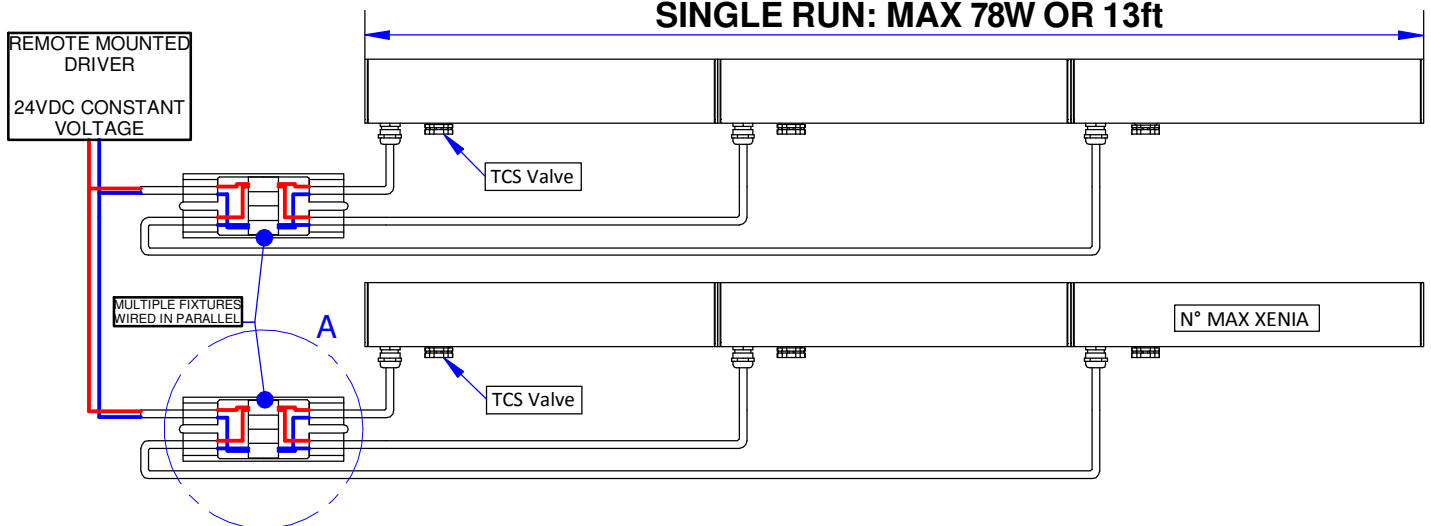
All power supply, wiring and accessories used for product installation shall be original Linea Light Group parts or approved by the company. The warranty will become void if non original or non approved parts are used.

 RED WIRE = +
 BLUE WIRE = -

DETAIL A IP JUNCTION BOX Fixtures wired in parallel



SINGLE RUN: MAX 78W OR 13ft



MODEL	CODE	LENGTH (in)	MAX N° XENIA COLLEGABLE ON A SINGLE RUN
XENIA_W	E93786	14.4	11
	E93825	24.8	6
	E93828	36.6	3
	E93829	48.4	3
	E81696	60.2	2

CONSTANT CURRENT REMOTE DRIVER

Wiring procedure


- 1 Switch off the main switch.
- 2 Connect the Xenia to the power supply unit.
- 3 Connect the power supply unit to the main line power.
- 4 Switch on the main switch.

N.B

All maintenance and installation operations must be carried out with the main switch turned off.

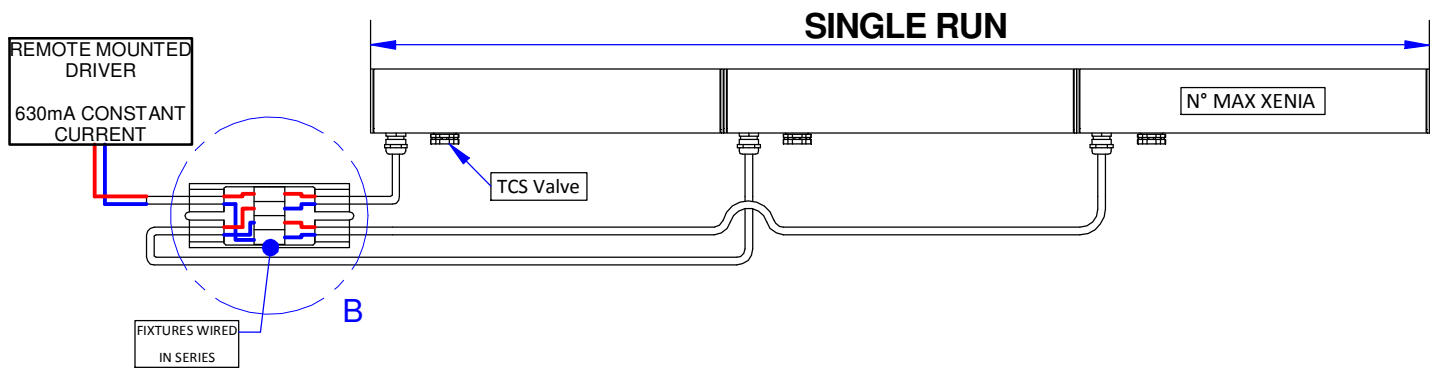
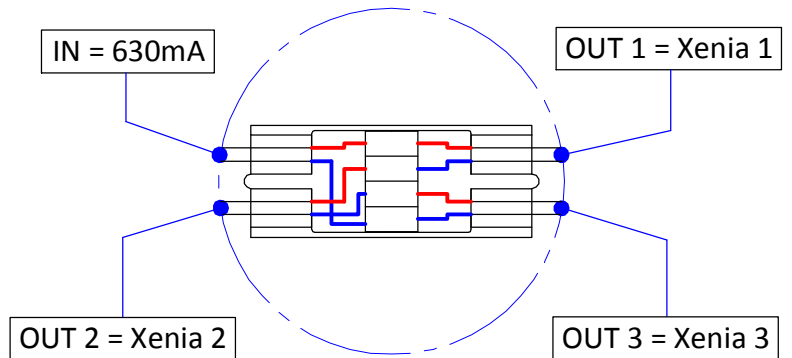
The Xenia must be powered at 630mA in constant current.

All power supply, wiring and accessories used for product installation shall be original Linea Light Group parts or approved by the company. The warranty will become void if non original or non approved parts are used.

 RED WIRE = +

 BLUE WIRE = -

DETAIL B IP JUNCTION BOX Fixtures wired in series



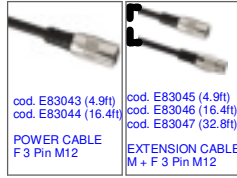
MODEL	CODE	LENGTH (in)	MAX N° XENIA ON A SINGLE RUN
XENIA_W PRO	E93690	14.5	3
	E93691	24.8	2
	E93755	36.6	1
	E93785	48.4	1

XENIA_W / XENIA_W PRO ON/OFF | 120 Vac INTEGRAL DRIVER

Wiring procedure

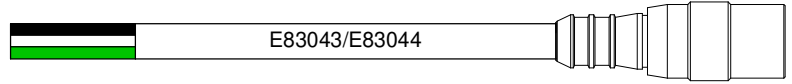
- 1 Switch off the main switch.
- 2 Connect the Xenia to the mains voltage.
- 3 Switch on the main switch.

N.B.
All maintenance and installation operations must be carried out with the main switch turned off



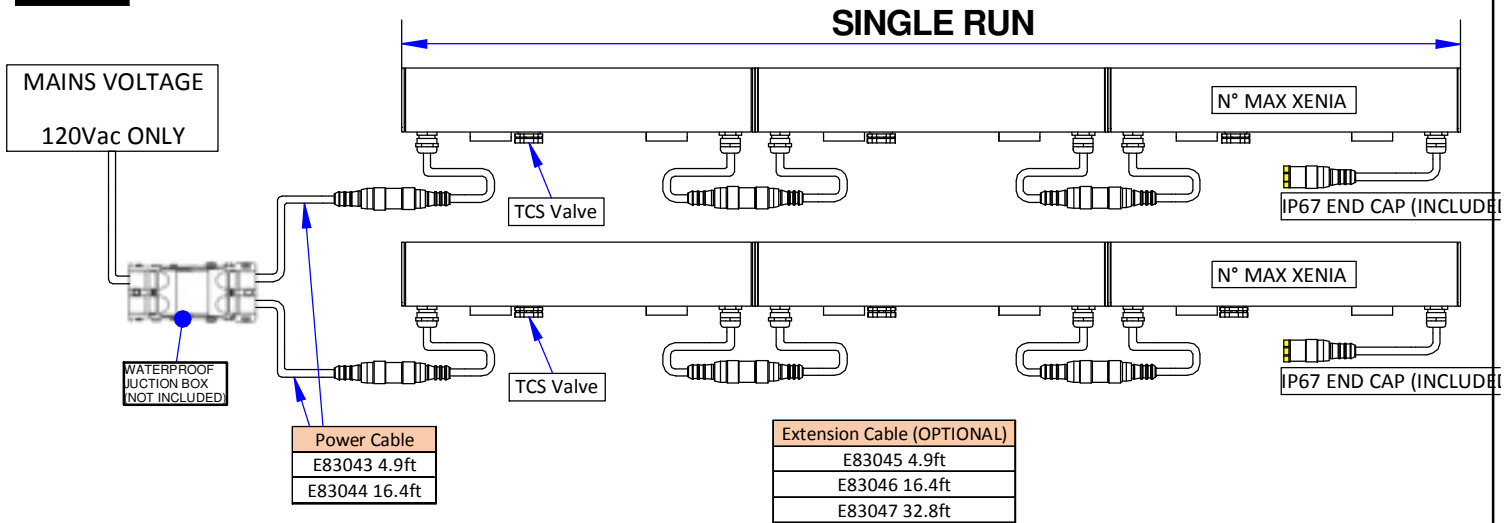
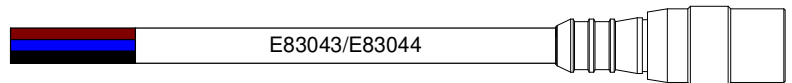
All power supply, wiring and accessories used for product installation shall be original Linea Light Group parts or approved by the company. The warranty will become void if non original or non approved parts are used.

- BLACK WIRE = LINE
- WHITE WIRE = NEUTRAL
- GREEN WIRE = GROUND



OR

- BROWN WIRE = LINE
- BLUE WIRE = NEUTRAL
- BLACK WIRE = GROUND



MOD.	COD.	LENGTH (in)	MAX N° XENIA CONNECTABLE ON A SINGLE RUN @120Vac	SINGLE RUN MAX LENGHT
XENIA_W	E93688	14.4	35	82ft Extension cables INCLUDED
	E93689	24.8	18	
	E94020	36.6	12	
	E94023	48.4	9	
	E81695	60.2	7	
XENIA_W PRO	E81702	14.4	28	
	E81703	24.8	15	
	E81704	36.6	10	
	E81705	48.4	7	
	E81706	60.2	5	

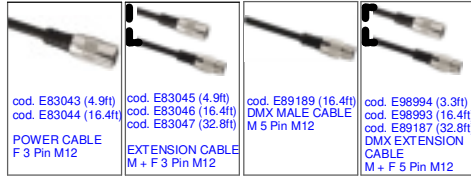
0-10V INTEGRAL DRIVER

Wiring procedure

- 1 Switch off the main switch.
- 2 Connect the Xenia to the mains voltage.
- 3 Switch on the main switch.

N.B

All maintenance and installation operations must be carried out with the main switch turned off

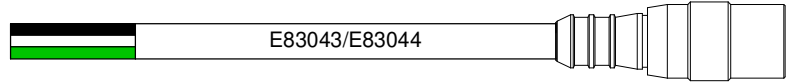


All power supply, wiring and accessories used for product installation shall be original Linea Light Group parts or approved by the company. The warranty will become void if non original or non approved parts are used.

BLACK WIRE = LINE

WHITE WIRE = NEUTRAL

GREEN WIRE = GROUND

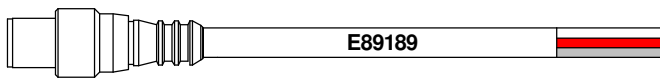
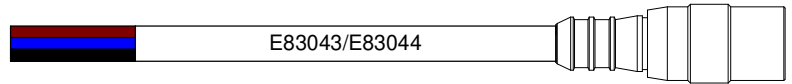


OR

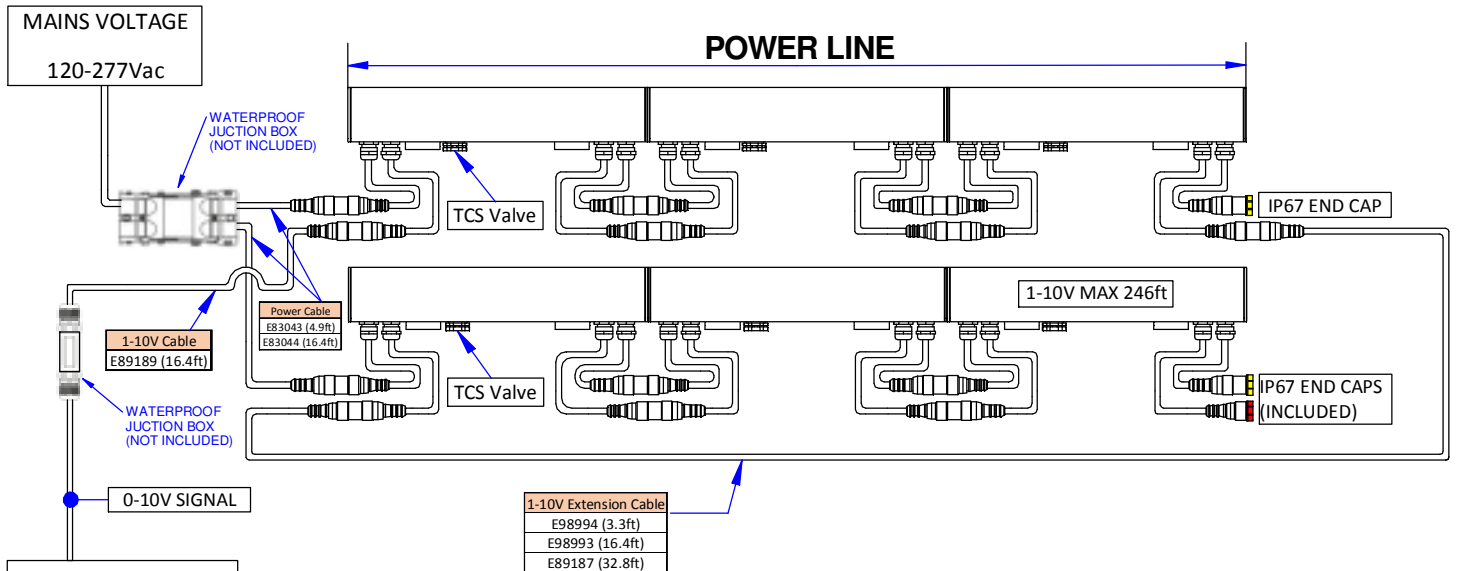
BROWN WIRE = LINE

BLUE WIRE = NEUTRAL

BLACK WIRE = GROUND



	WHITE WIRE = 0-10V -
	RED WIRE = 0-10V +
	SHIELD = unconnected



MOD.	COD.	LENGTH mm	MAX N° XENIA ON A SINGLE RUN @120Vac	MAX N° XENIA ON A SINGLE RUN @277Vac	SINGLE RUN MAX LENGTH	MAX 0/1-10V LINE LENGHT
XENIA_W PRO	E81709	36.6	13	26	82ft @277Vac 41ft @120Vac	246ft
	E81710	48.4	10	20		
	E81711	60.2	8	16		

RGBW DMX WITH REMOTE 24V DRIVER

Wiring procedure

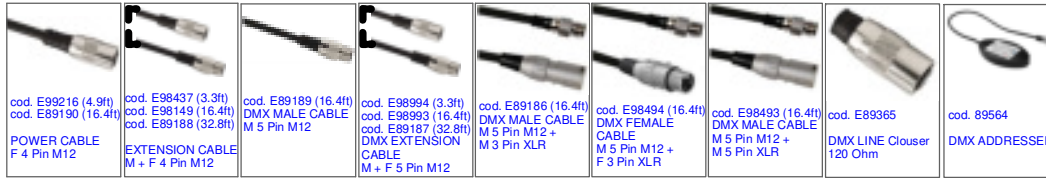
- 1 Switch off the main switch.
- 2 Connect the Xenia to the power supply unit.
- 3 Connect the power supply unit to the main line power.
- 4 Switch on the main switch.

N.B.

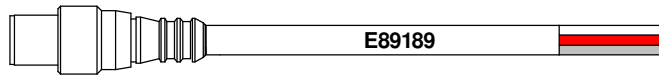
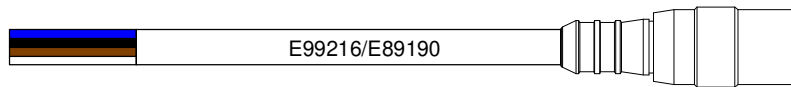
All maintenance and installation operations must be carried out with the main switch turned off

The Xenia must be powered at 24Vdc in constant voltage.

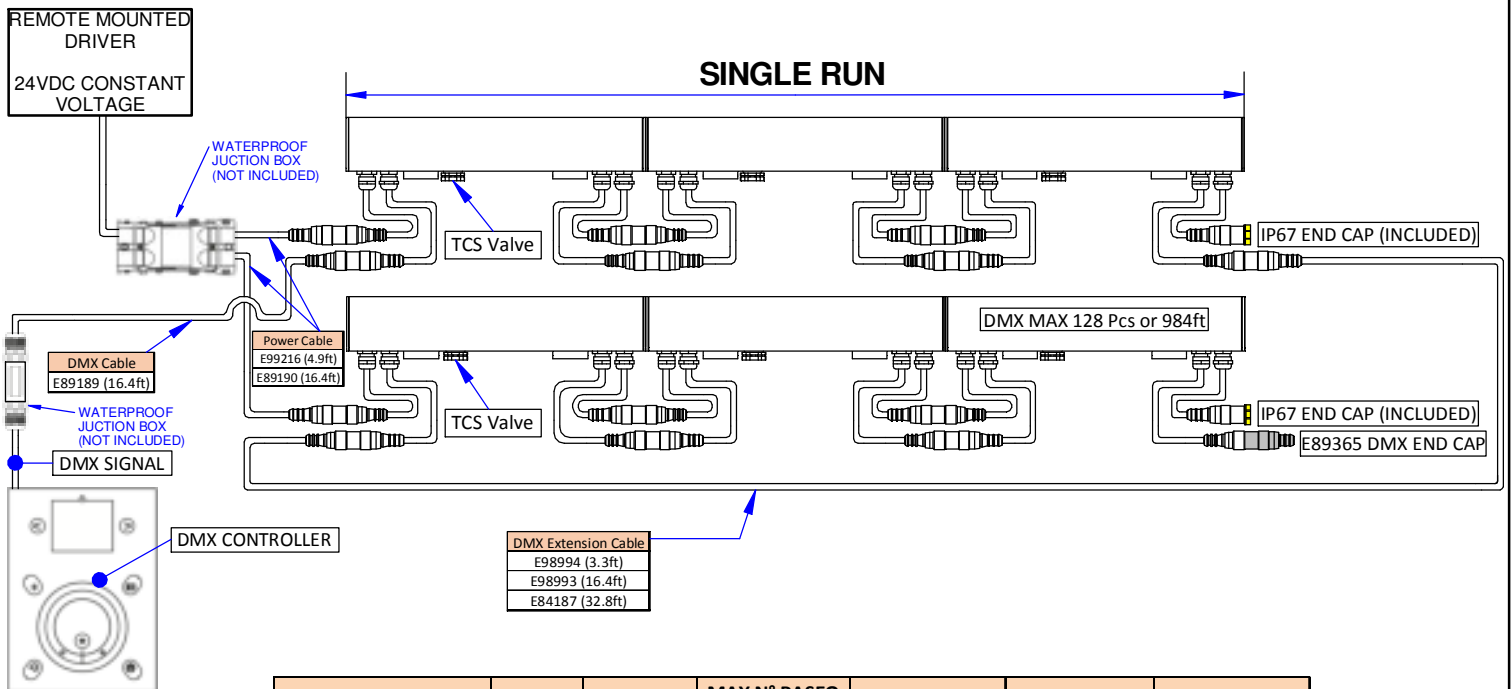
All power supply, wiring and accessories used for product installation shall be original Linea Light Group parts or approved by the company. The warranty will become void if non original or non approved parts are used.



- BLUE WIRE = NEGATIVE (-)**
- BLACK WIRE = NEGATIVE (-)**
- BROWN WIRE = POSITIVE (+)**
- WHITE WIRE = POSITIVE (+)**



- WHITE WIRE = - DMX**
- RED WIRE = + DMX**
- SHIELD = GND**



MOD.	COD.	LENGTH (in)	MAX N° PASEO COLLEGABLE ON A SINGLE RUN	SINGLE RUN MAX LENGHT	MAX N° PASEO ON A DMX LINE	DMX LINE MAX LENGHT
XENIA_W	E94054	21.1	6	11'7.5"	128	984ft
	E94057	46.5	3			

RGBW DMX WITH INTEGRAL DRIVER

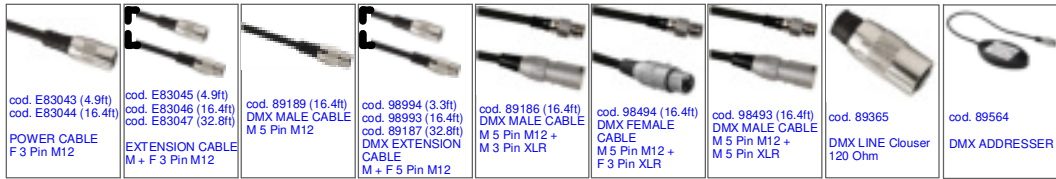
Wiring procedure

- 1 Switch off the main switch.
- 2 Connect the Xenia to mains voltage.
- 3 Switch on the main switch.

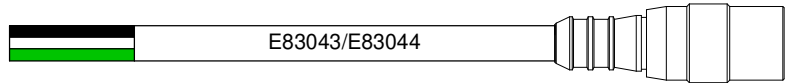
N.B

All maintenance and installation operations must be carried out with the main switch turned off

All power supply, wiring and accessories used for product installation shall be original Linea Light Group parts or approved by the company. The warranty will become void if non original or non approved parts are used.

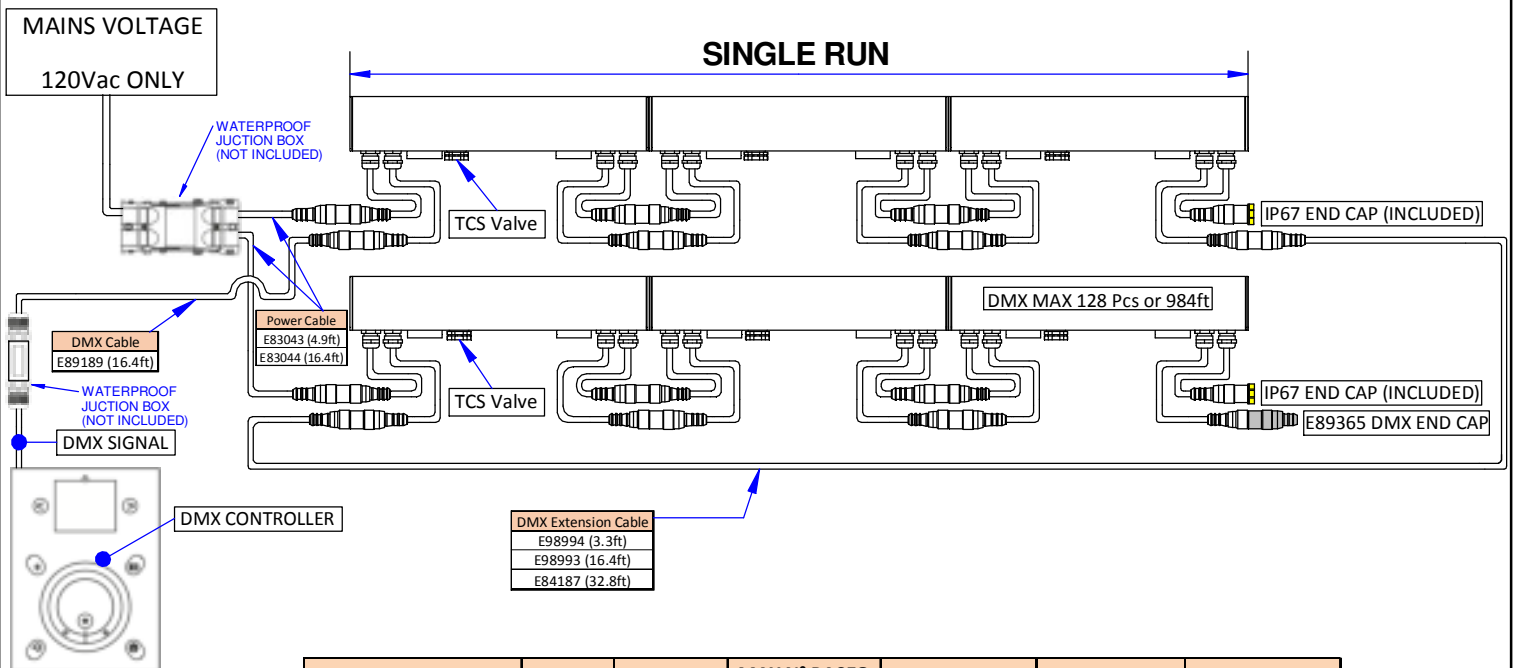
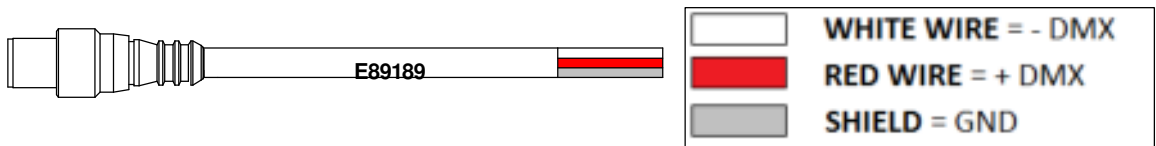
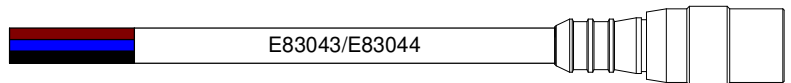


- BLACK WIRE = LINE
- WHITE WIRE = NEUTRAL
- GREEN WIRE = GROUND



OR

- BROWN WIRE = LINE
- BLUE WIRE = NEUTRAL
- BLACK WIRE = GROUND



MOD.	COD.	LENGTH (in)	MAX N° PASEO COLLEGABLE ON A SINGLE RUN	SINGLE RUN MAX LENGHT	MAX N° PASEO ON A DMX LINE	DMX LINE MAX LENGHT
XENIA_W PRO	E93606	19.7	25	41ft	128	984ft
	E93607	46.5	12			