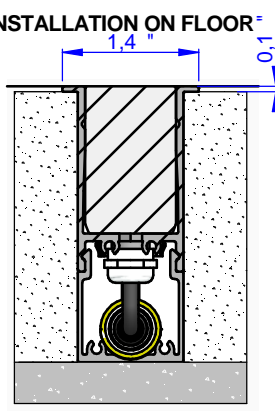
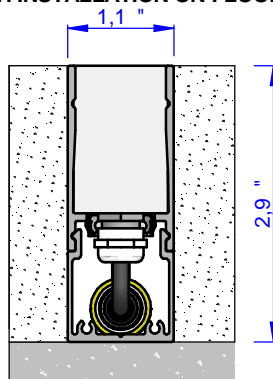
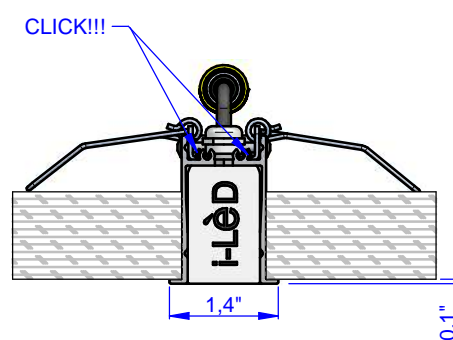
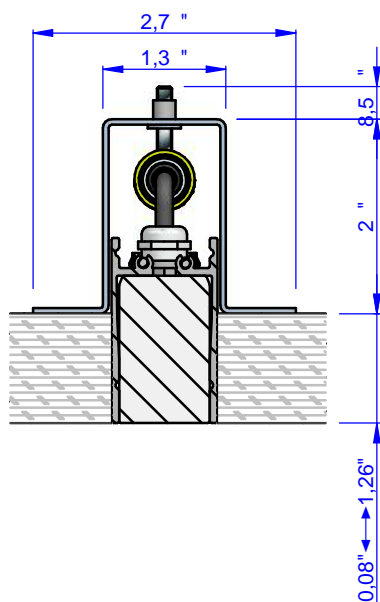
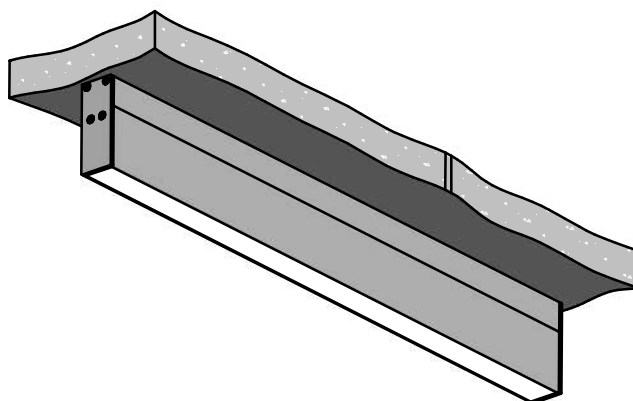
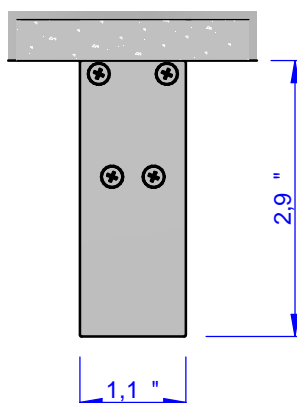
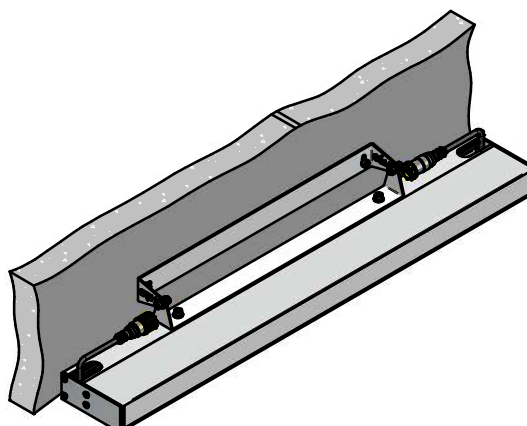
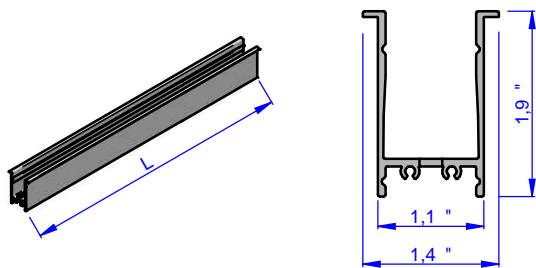
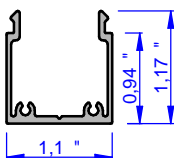
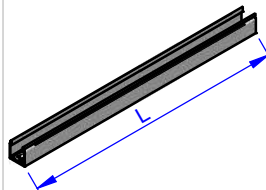
**INSTALLATION ON FLOOR "****FLUSH INSTALLATION ON FLOOR****INSTALLATION ON DRYWALL****FLUSH INSTALLATION ON DRYWALL****CEILING INSTALLATION****WALL INSTALLATION**

Accessory (1)



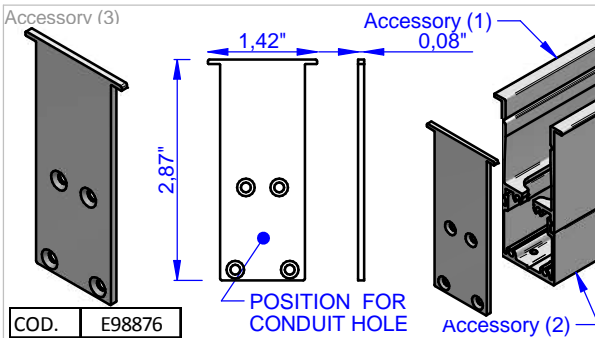
COD.	E98355	E98356	E98357
L.(inch)	20,2"	45,39"	57,20"

Accessory (2)



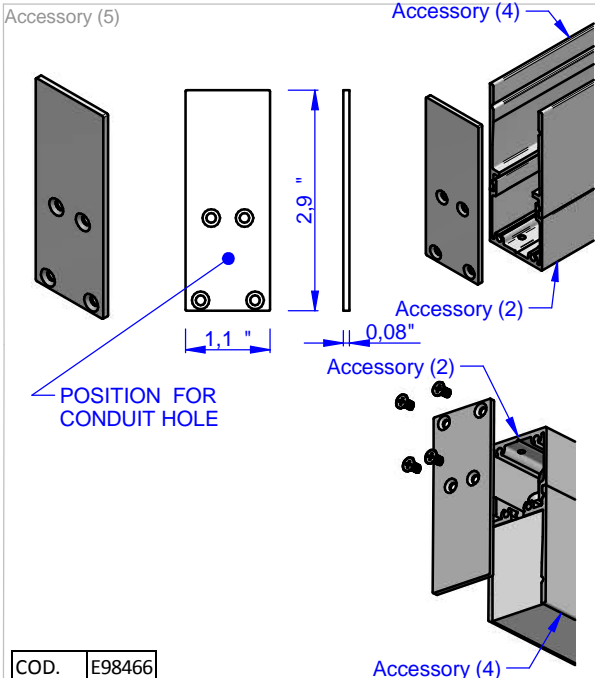
COD.	E98471	E98473	E98474
L.(inch)	20,2"	45,39"	57,20"

Accessory (3)



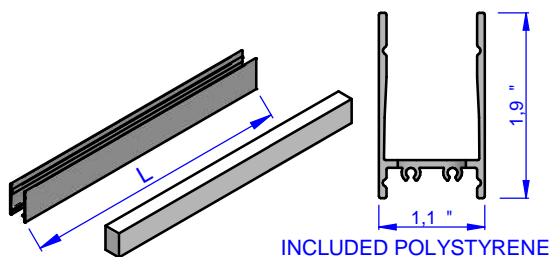
COD. E98876

Accessory (5)



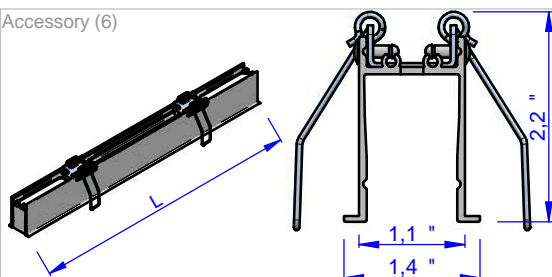
COD. E98466

Accessory (4)



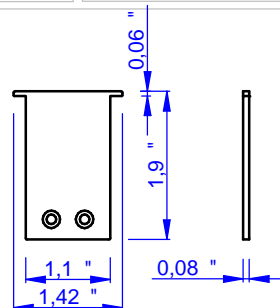
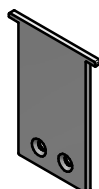
COD.	E98467	E98469	E98470
L.(inch)	20,2"	45,39"	57,20"

Accessory (6)

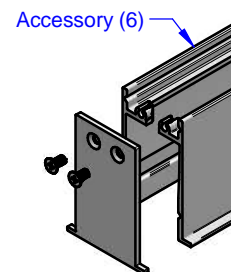


COD.	E98374	E98375	E98376
L.(inch)	20,2"	45,39"	57,20"

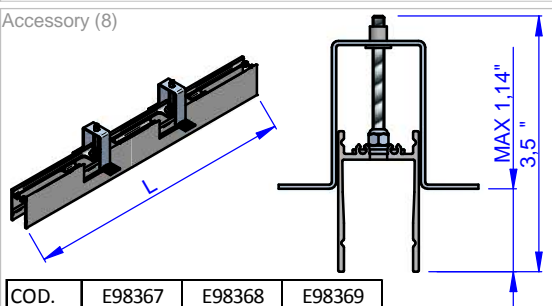
Accessory (7)



COD. E98465

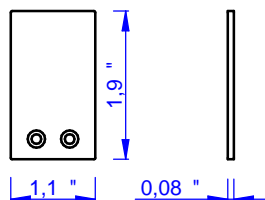


Accessory (8)

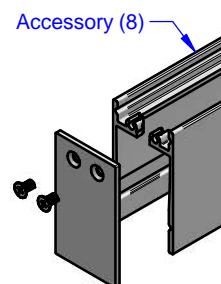


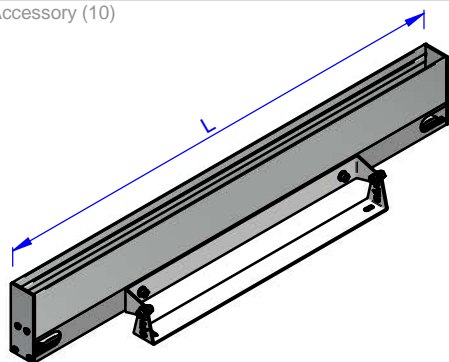
COD.	E98367	E98368	E98369
L.(inch)	20,2"	45,39"	57,20"

Accessory (9)

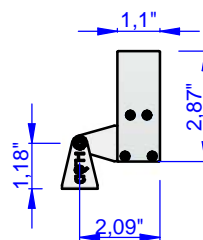
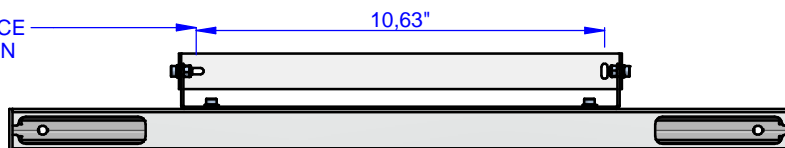


COD. E98464



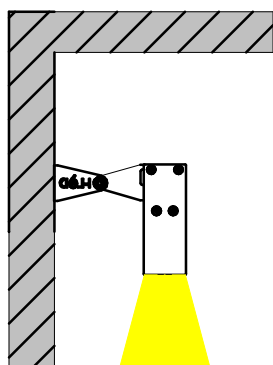
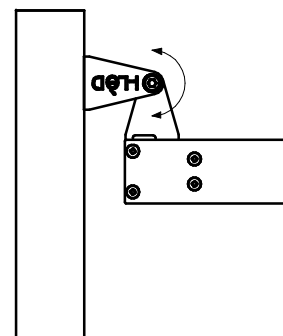
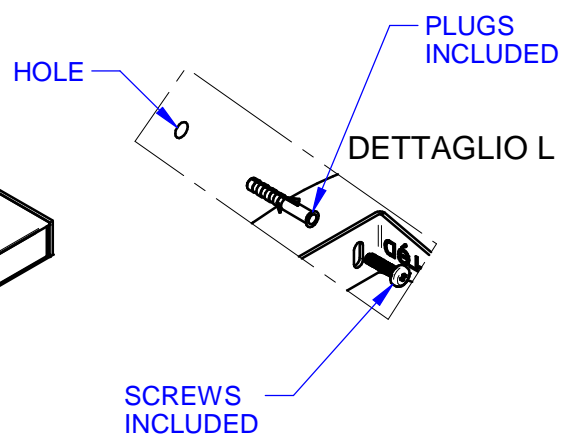
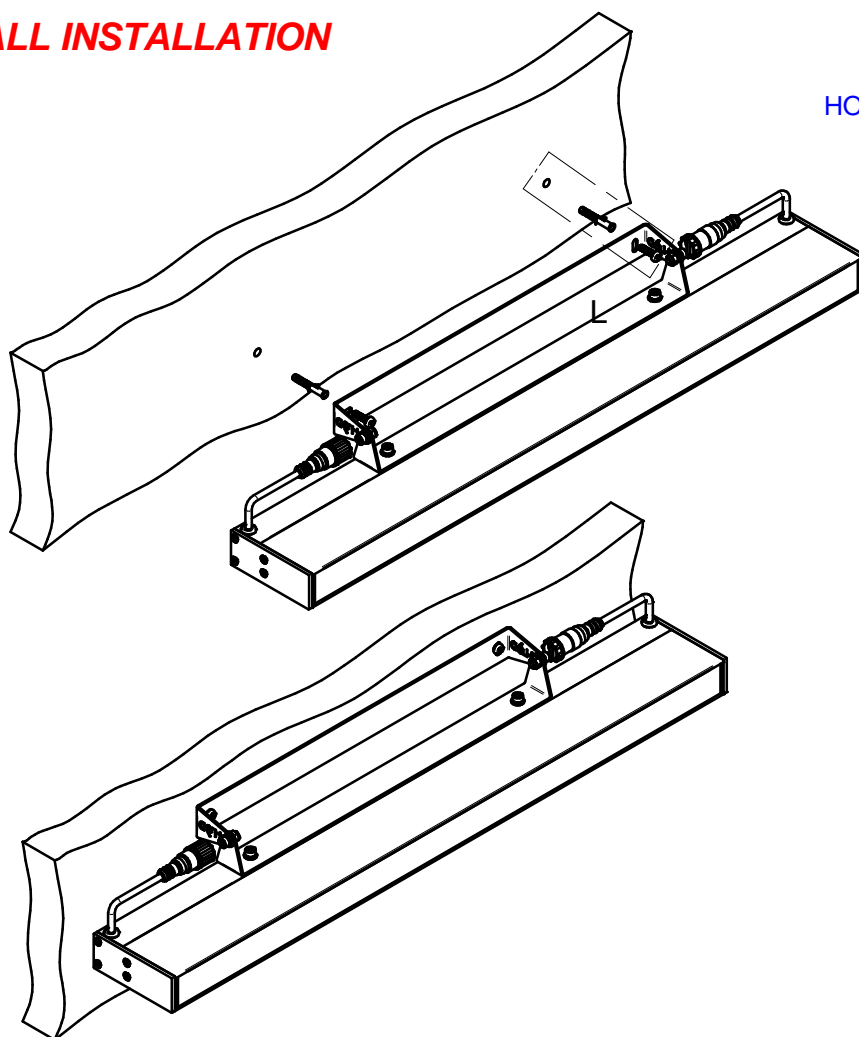


DISTANCE
BETWEEN
FIXING
HOLES



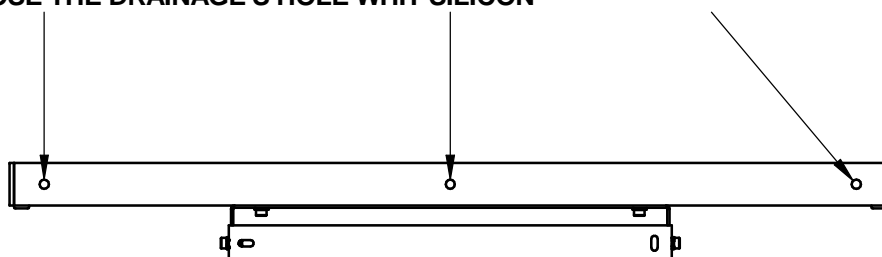
COD.	E98842	E98844	E98845
L (inch)	20,35"	45,55"	57,36"

WALL INSTALLATION

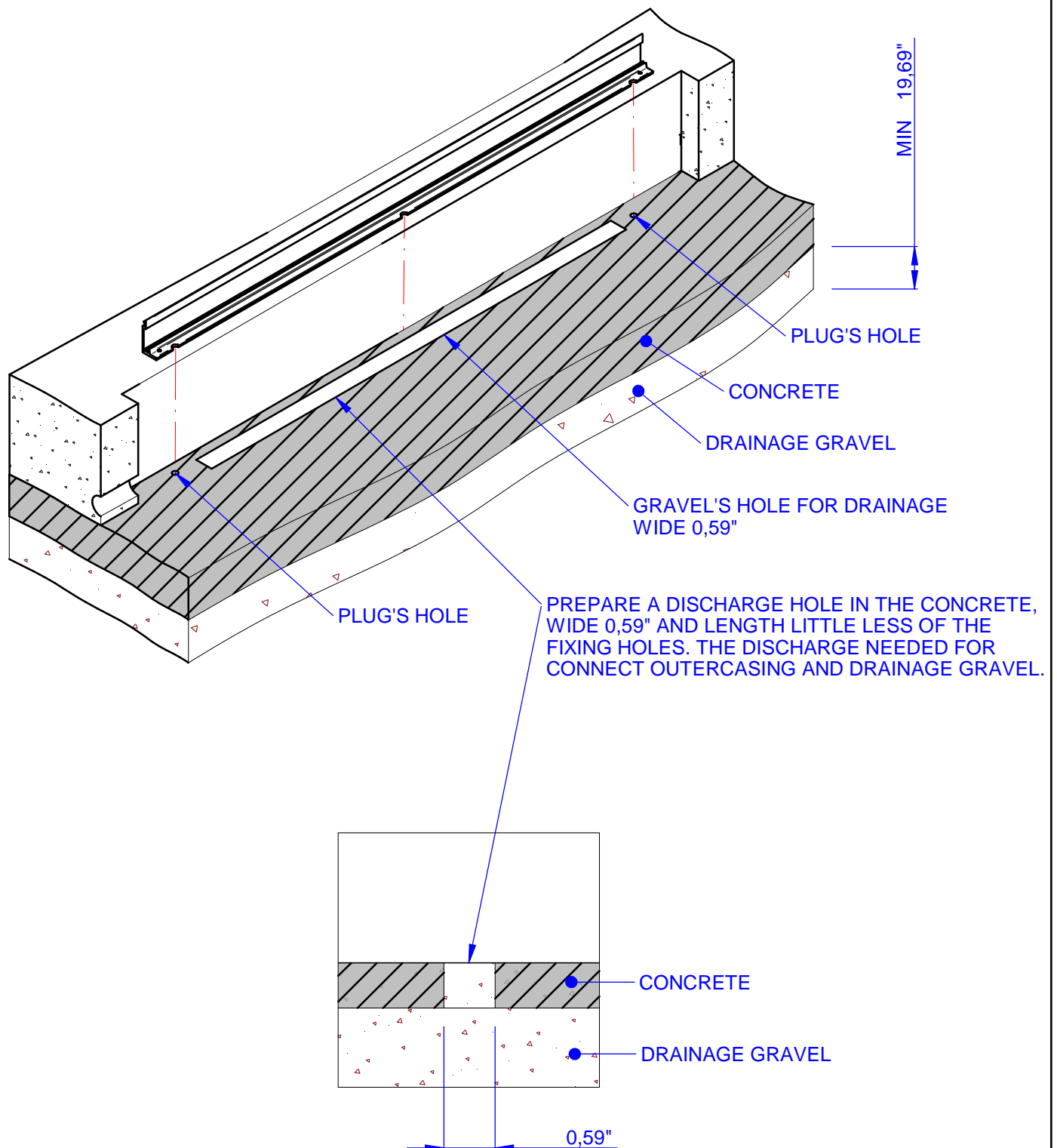


DOWN LIGHT

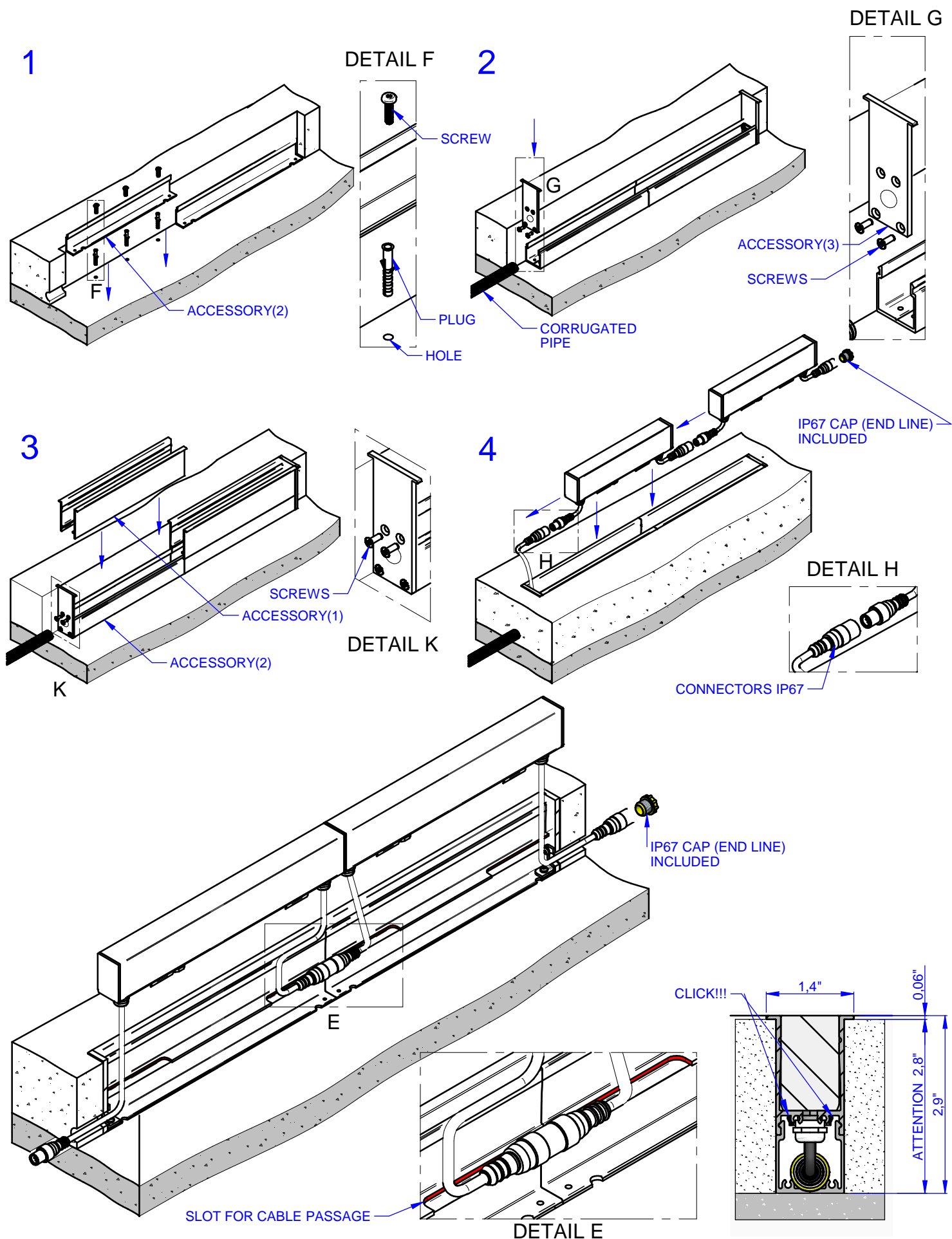
IF YOU USE THE ARTICLE IN DOWN LIGHT CONFIGURATION
CLOSE THE DRAINAGE'S HOLE WITH SILICON



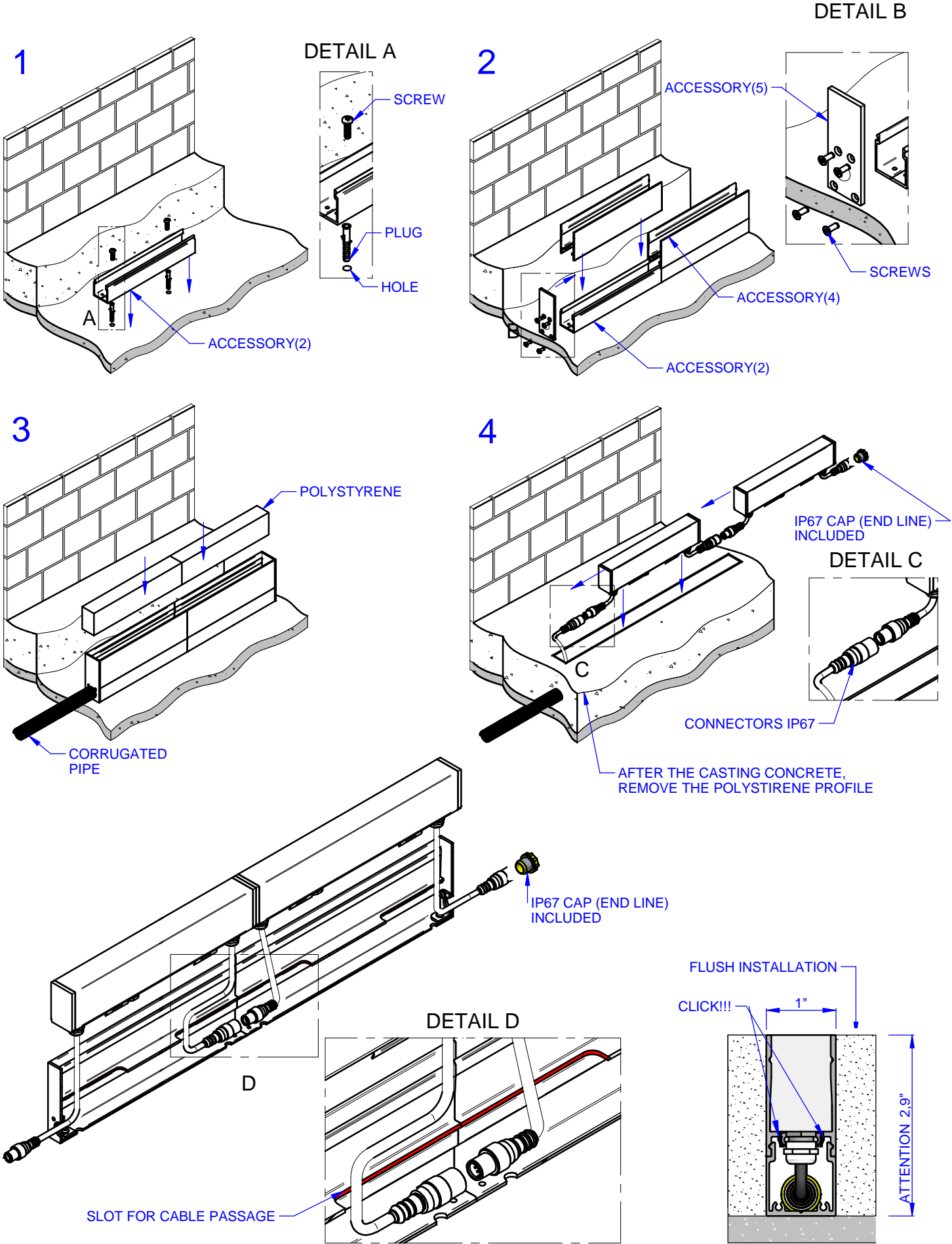
PREDISPOSITION FOR ALL FLOOR INSTALLATION



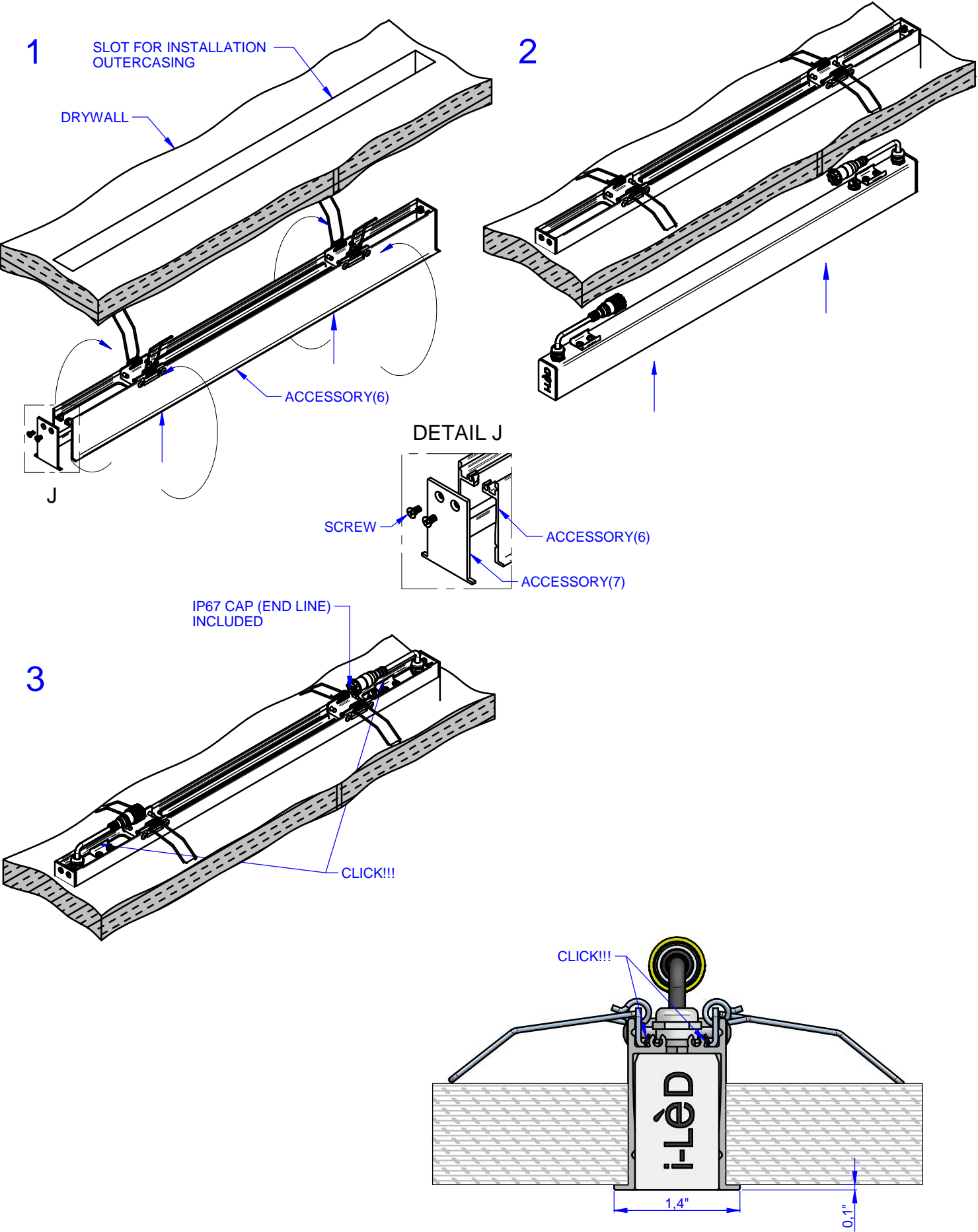
INSTALLATION ON FLOOR



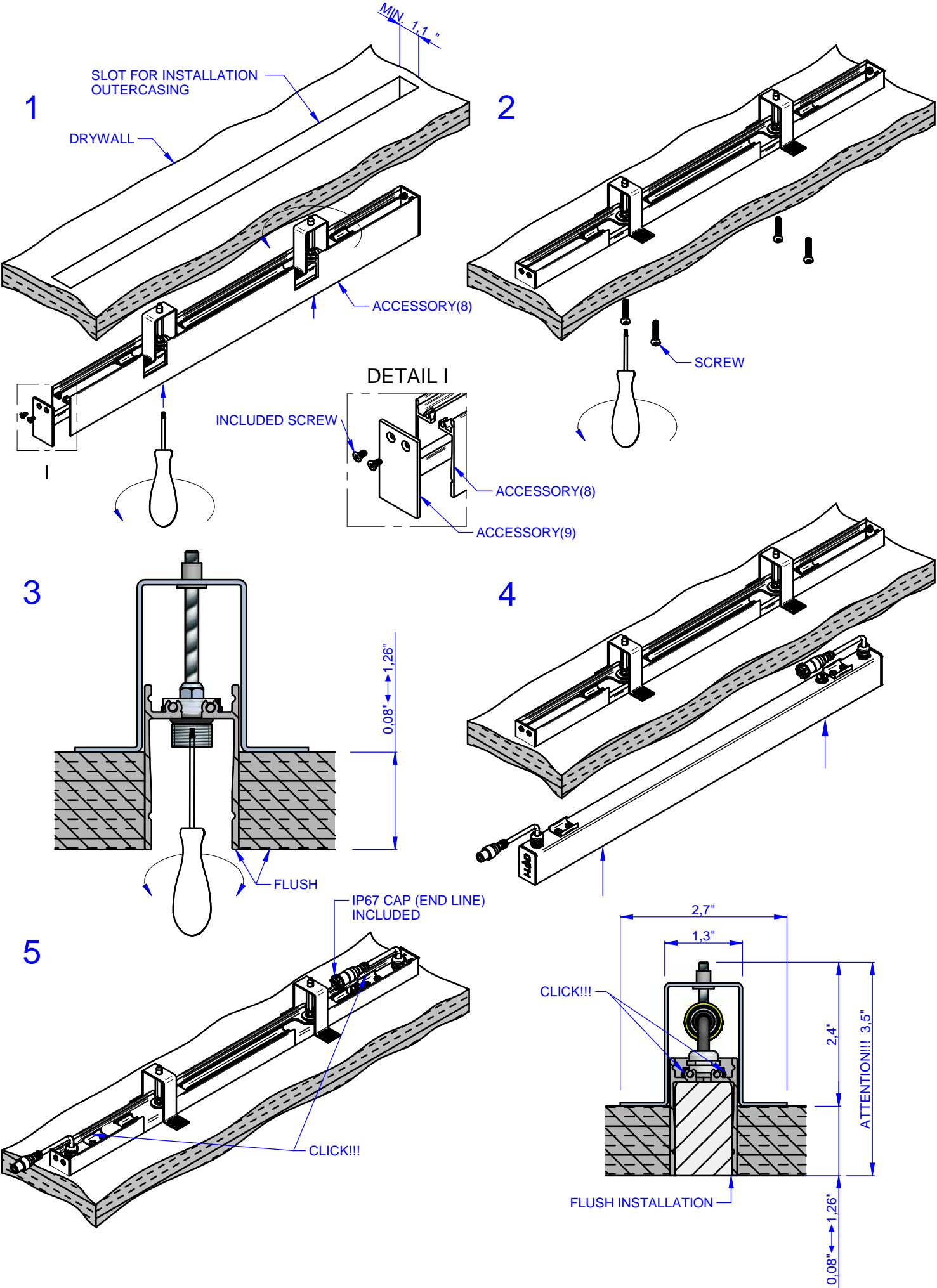
FLUSH INSTALLATION ON FLOOR



INSTALLATION ON DRYWALL



FLUSH INSTALLATION ON DRYWALL



THIS PRODUCT MUST BE INSTALLED IN ACCORDANCE WITH THE APPLICABLE INSTALLATION CODE BY A PERSON FAMILIAR WITH THE CONSTRUCTION AND OPERATION OF THE PRODUCT AND THE HAZARDS INVOLVED

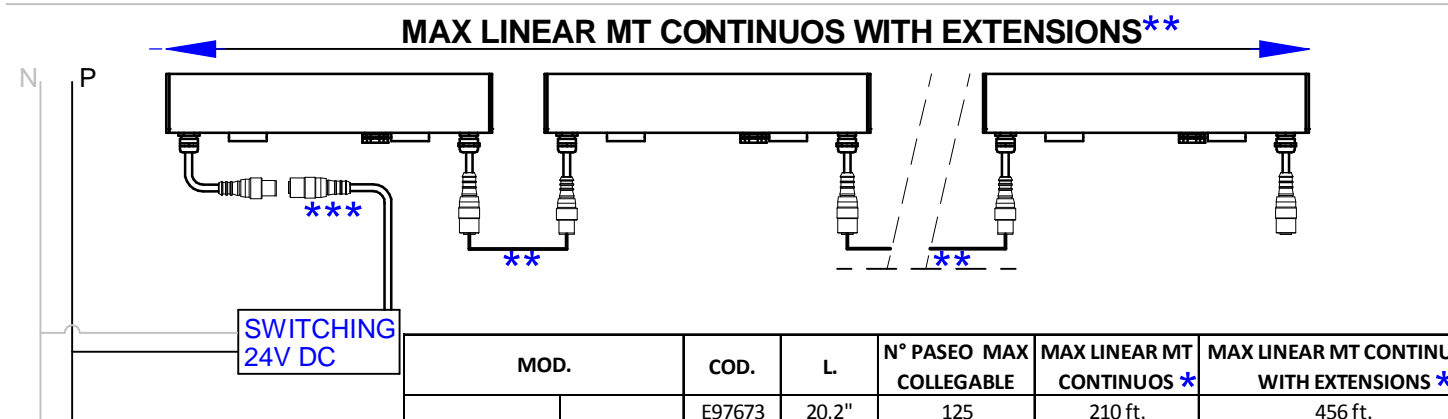
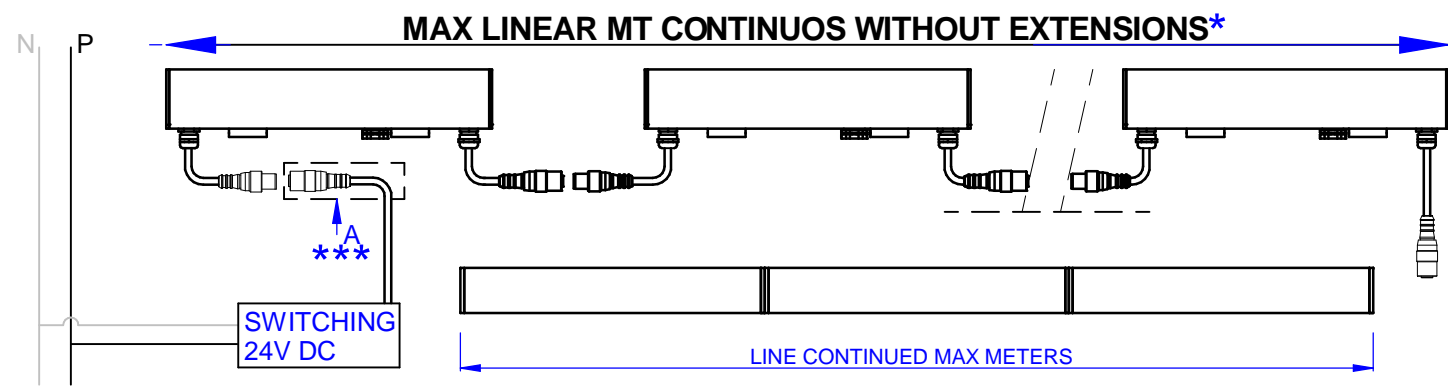
MOUNTING INSTRUCTIONS

READ ALL OF THESE INSTRUCTIONS BEFORE INSTALLING FIXTURES

- CAUTION: USE ONLY WITH CLASS 2 POWER UNIT
- Keep all of the instructions for future reference
- Turn off power before installing fixture
- Installation is to be performed by a qualified electrician only
- All installations must conform to the National Electrical Code as well as all local jurisdictional codes and regulations
- Any modification of the luminaire will void any and all written or implied warranties
- The manufacture accepts no responsibility for damage to persons or property arising through improper use or installation

INSTALLATION SEQUENCE

- Mount remote driver in accessible well ventilated space
- Ensure power is off before connecting driver to line voltage
- Follow the illustrated instructions for installation type
- Connect secondary wiring to fixture wiring
- WARNING - Be sure secondary wiring is connected to driver BEFORE energizing to avoid LED failure
- Energize



MOD.		COD.	L.	N° PASEO MAX COLLEGABLE	MAX LINEAR MT CONTINUOS *	MAX LINEAR MT CONTINUOS WITH EXTENSIONS **
PASEO_L	TRASPARENT	E97673	20,2"	125	210 ft.	456 ft.
		E97674	45,4"	58	220 ft.	466 ft.
		E97675	57,2"	41	197 ft.	443 ft.
	OPAL	E81328	20,2"	125	210 ft.	456 ft.
		E81329	45,4"	58	220 ft.	466 ft.
		E81330	57,2"	41	197 ft.	443 ft.
PASEO_M	TRASPARENT	E97676	20,2"	125	210 ft.	456 ft.
		E97677	45,4"	58	220 ft.	466 ft.
		E97678	57,2"	41	197 ft.	443 ft.
	OPAL	E97688	20,2"	125	210 ft.	456 ft.
		E97689	45,4"	58	220 ft.	466 ft.
		E97690	57,2"	41	197 gt.	443 ft.

