



General: Orma is a compact and shallow family of round LED in-grades suitable to illuminate outdoor architectural elements such as facades, columns as well as landscape and pathway lighting.

The overall depth of roughly 3" including the housing makes it one of the most compact fixtures on the market. The new trimless version combines style and performance in a package that includes multiple beam spreads, color temperatures, the choice to use Constant Current or Constant Voltage and new housings for either concrete or tile applications. Orma' special optics like Blade (spreading light 180°).

Fixture Body: Die-Cast Aluminum 6060, anodized black (15 µm)

Trim: Flush (Stainless Steel) or Semi-Flush (Stainless Steel or Brass) Trim. Brass is untreated and will patina naturally. Extra-clear, Tempered glass.

Mounting/Housing: Black, ABS housings available for both Concrete or Tile Flush installation.

Drive-over: 2.1"/2.5" up to 4,409 lbs.

Walk-over: 3.3"/3.8"/4.9"/5.4" walk-over.

Dimensions (Flush – Semi-Flush)/Weight: 2.1"/2.5" (0.44 lbs) – 3.3"/3.8" (1.1 lbs) – 5.4" (1.98 lbs)

Driver: Remote, 120-277V Dimmable 0-10V or Non-Dim. Available in both Constant Current (CC) and Constant Voltage (CV) to leave flexibility of installation.

CC features: Less susceptible to voltage drop (exceeding 32' distance); Allows for dimming down to 0.1%; Fixtures need to be wired in series.

CV features: Possibility to use higher wattage drivers and feed multiple fixtures with less drivers; fixtures need to be wired in parallel.

Wattages (CC/CV): 4W/5W (2.1" & 2.5") – 8W/9W (3.3" & 3.8") – 12W (4.9" & 5.4" - CC Only)

Cable: Fixture comes with 3.28' of power cable and built-in Aquastop® (anti-wicking) system

IP rating: IP68 for temporary submersion up to 15' depth for up to a maximum of 90 mins.

IK rating: IK 10

ETL Certification: ETL, wet location

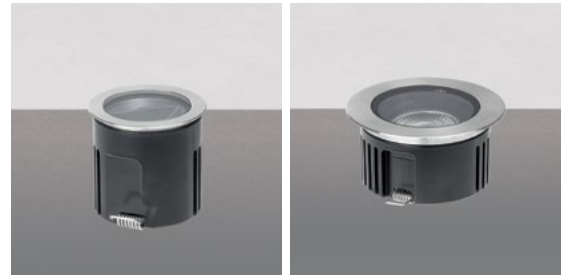
Optics: Fixed or Adjustable (optic adjustability from side of fixture, which avoids having to open the trim). Available in Spot – Flood – Wide Flood – Elliptical. Some variants can also mount Honeycomb and Anti-glare (Dark Light) accessories.

Color temperatures: 2700K – 3000K – 4000K.

CRI: 80+

Lumen Maintenance: L70 projections tested at Tj 65° C and Ta 25°.

Warranty: 5-year Limited Warranty on fixtures. 1-year Limited Warranty on Remote Drivers.



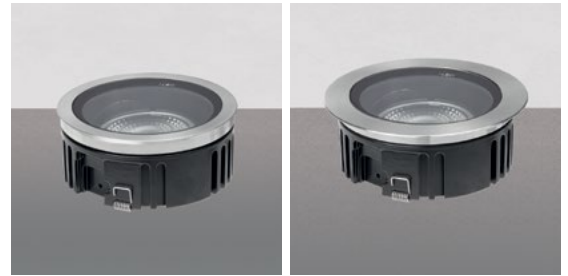
2.1" 4W C.C. / 5W C.V.

2.5" 4W C.C. / 5W C.V.



3.3" 8W C.C. / 9W C.V.

3.8" 8W C.C. / 9W C.V.



4.9" 12W C.C.

5.4" 12W C.C.

Delivered Lumens*	2.1"/2.5"	3.3"/3.8"	4.9"/5.4"
Spot	307	852	1455
Flood	271	895	1380
Wide Flood	299	811	1385
Elliptical	335	NA	NA

*Values shown for 3000K

Ordering Information							(Required)	
Product	Trim	Type	Diameter	Wattage/Operation	Color Temp	Optic	Housing ⁵	Driver ⁵
OR = ORMA	FT = Flush Trim St. Steel ¹ SFST = Semi-Flush St. Steel Trim ² SFBT = Semi-Flush Brass Trim ²	F = Fixed FHC = Fixed HoneyComb FDL = Fixed DarkLight	21 = 2.1" (FT)	4 CC = 4W / Constant Current (350mA) 5 CV = 5W / Constant Voltage (24VDC)	27 = 2700K 30 = 3000K 40 = 4000K	SP = Spot FL = Flood WFL = Wide Flood EL = Elliptical ⁴	E99650 (2.1" 2.5") E99560 (2.1" 2.5") E99855 (2.1") E83251 (2.1") E99651 (3.3" 3.8") E83252 (3.3" 3.8") E99563 (3.3") E99856 (3.3") E99652 (4.9" 5.4") E83253 (4.9" 5.4") E99564 (4.9") E99857 (4.9")	CC: ECO30W-XXX SOLO50W-XXX SOLO100W-XXX CV: OT96-D010 OT96-JBX
			25 = 2.5" (SFST/ SFBT)	4 CC = 4W / Constant Current (350mA) 5 CV = 5W / Constant Voltage (24VDC)				
			33 = 3.3" (FT)	8 CC = 8W / Constant Current (220mA) 9 CV = 9W / Constant Voltage (24VDC)				
		A = Adjustable AHC = Adjustable HoneyComb ³	38 = 3.8" (SFST/ SFBT)	8 CC = 8W / Constant Current (220mA) 9 CV = 9W / Constant Voltage (24VDC)				
			49 = 4.9" (FT)	12 CC = 12W / Constant Current (350mA)				
			54 = 5.4" (SFST/ SFBT)	12 CC = 12W / Constant Current (350mA)				

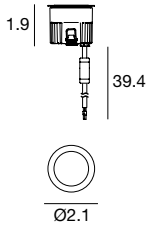
¹ 2.1", 3.3", 4.9" ONLY ³ N/A in 2.1" or 2.5"

² 2.5", 3.8", 5.4" ONLY

⁴ Fixed 2.1" and 2.5" ONLY

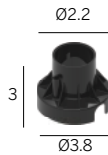
⁵ See page 2

2.1" 4W C.C. DC - 350mA / 5W C.V. DC - 24 VDC



HOUSING OPTIONS (pick one)

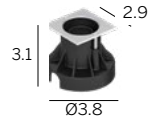
E99650
Concrete Housing
PVC



E99560¹
Round Vandal
Resistant Housing
PVC



E99855¹
Square Vandal
Resistant Housing
PVC



E83251
Tile Housing
PVC



DRIVER OPTIONS (pick one)

C.C. Power supply options (remote only)

ECO30W-350
0-10V EldoLED
ECOdrive 30W
for 1-3 fixtures

SOLO50W-350
0-10V EldoLED
SOLOdrive 50W
for 1-6 fixtures

SOLO100W-350
0-10V EldoLED
SOLOdrive 100W
for 1-12 fixtures

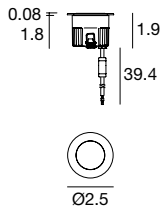
C.V. Power supply options (remote only)

OT96-D010
Osram, 10% 0-10V dim, 96W,
24VDC, 120-277VAC, supplied
in a Dry location enclosure

OT96-JBX
Osram, Non-dim 24VDC,
120-277VAC, Wet location

¹ Note: Vandal resistant housings make the Flush Trim fixtures become Semi-flush Trim.

2.5" C.C. 4W DC - 350mA / 5W C.V. DC - 24 VDC



HOUSING OPTIONS (pick one)

E99650
Concrete Housing
PVC



E83251
Tile Housing
PVC



DRIVER OPTIONS (pick one)

C.C. Power supply options (remote only)

ECO30W-350
0-10V EldoLED
ECOdrive 30W
for 1-3 fixtures

SOLO50W-350
0-10V EldoLED
SOLOdrive 50W
for 1-6 fixtures

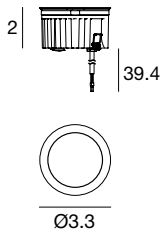
SOLO100W-350
0-10V EldoLED
SOLOdrive 100W
for 1-12 fixtures

C.V. Power supply options (remote only)

OT96-D010
Osram, 10% 0-10V dim, 96W,
24VDC, 120-277VAC, supplied
in a Dry location enclosure

OT96-JBX
Osram, Non-dim 24VDC,
120-277VAC, Wet location

3.3" 8W C.C. DC - 220mA / 9W C.V. DC - 24 VDC



HOUSING OPTIONS (pick one)

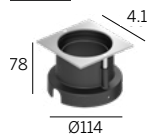
E99651
Concrete Housing
PVC



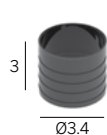
E99563¹
Round Vandal
Resistant Housing
PVC



E99856¹
Square Vandal
Resistant Housing
PVC



E83252
Tile Housing
PVC



DRIVER OPTIONS (pick one)

C.C. Power supply options (remote only)

ECO30W-220
0-10V EldoLED
ECOdrive 30W
for 1 fixture

SOLO50W-220
0-10V EldoLED
SOLOdrive 50W
for 1-2 fixtures

SOLO100W-220
0-10V EldoLED
SOLOdrive 100W
for 1-4 fixtures

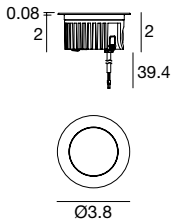
C.V. Power supply options (remote only)

OT96-D010
Osram, 10% 0-10V dim, 96W,
24VDC, 120-277VAC, supplied
in a Dry location enclosure

OT96-JBX
Osram, Non-dim 24VDC,
120-277VAC, Wet location

¹ Note: Vandal resistant housings make the Flush Trim fixtures become Semi-flush Trim.

3.8" C.C. 8W DC - 220mA / 9W C.V. DC - 24 VDC

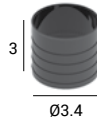


HOUSING OPTIONS (pick one)

E99651
Concrete Housing
PVC



E83252
Tile Housing
PVC



DRIVER OPTIONS (pick one)

C.C. Power supply options (remote only)

ECO30W-220
0-10V EldoLED
ECOdrive 30W
for 1 fixture

SOLO50W-220
0-10V EldoLED
SOLOdrive 50W
for 1-2 fixtures

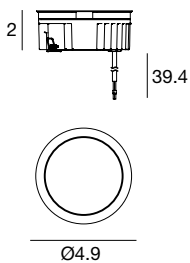
SOLO100W-220
0-10V EldoLED
SOLOdrive 100W
for 1-4 fixtures

C.V. Power supply options (remote only)

OT96-DO10
Osram, 10% 0-10V dim, 96W,
24VDC, 120-277VAC, supplied
in a Dry location enclosure

OT96-JBX
Osram, Non-dim 24VDC,
120-277VAC, Wet location

4.9" 12W C.C. DC - 350mA



Housing OPTIONS (pick one)

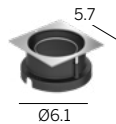
E99652
Concrete Housing
PVC



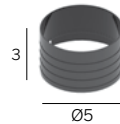
E99564¹
Round Vandal
Resistant Housing
PVC



E99857¹
Square Vandal
Resistant Housing
PVC



E83253
Tile Housing
PVC



DRIVER OPTIONS (pick one)

C.C. Power supply options (remote only)

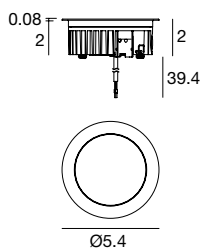
ECO30W-350
0-10V EldoLED
ECOdrive 30W
for 1 fixture

SOLO50W-350
0-10V EldoLED
SOLOdrive 50W
for 1-2 fixtures

SOLO100W-350
0-10V EldoLED
SOLOdrive 100W
for 1-4 fixtures

¹ Note: Vandal resistant housings make the Flush Trim fixtures become Semi-flush Trim.

5.4" C.C. 12W DC - 350mA

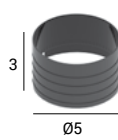


Housing OPTIONS (pick one)

E99652
Concrete Housing
PVC



E83253
Tile Housing
PVC



DRIVER OPTIONS (pick one)

C.C. Power supply options (remote only)

ECO30W-350
0-10V EldoLED
ECOdrive 30W
for 1 fixture

SOLO50W-350
0-10V EldoLED
SOLOdrive 50W
for 1-2 fixtures

SOLO100W-350
0-10V EldoLED
SOLOdrive 100W
for 1-4 fixtures