



**General:** Orma is a compact and shallow family of round LED in-grades suitable to illuminate outdoor architectural elements such as facades, columns as well as landscape and pathway lighting.

The overall depth of roughly 3" including the housing makes it one of the most compact fixtures on the market. The new trimless version combines style and performance in a package that includes multiple beam spreads, color temperatures, the choice to use Constant Current or Constant Voltage and new housings for either concrete or tile applications. Orma' special optics like Blade (spreading light 180°).

**Fixture Body:** Die-Cast Aluminum 6060, anodized black (15 µm)

**Trim:** Flush (Stainless Steel) or Semi-Flush (Stainless Steel or Brass) Trim. Brass is untreated and will patina naturally. Extra-clear, Tempered glass.

**Mounting/Housing:** Black, ABS housings available for both Concrete or Tile Flush installation.

**Drive-over:** 2.1"/2.5" up to 4,409 lbs.

**Walk-over:** 3.3"/3.8"/4.9"/5.4" walk-over.

**Dimensions (Flush – Semi-Flush)/Weight:** 2.1"/2.5" (0.44 lbs) – 3.3"/3.8" (1.1 lbs) – 5.4" (1.98 lbs)

**Driver:** Remote, 120-277V Dimmable 0-10V or Non-Dim. Available in both Constant Current (CC) and Constant Voltage (CV) to leave flexibility of installation.

**CC features:** Less susceptible to voltage drop (exceeding 32' distance); Allows for dimming down to 0.1%; Fixtures need to be wired in series.

**CV features:** Possibility to use higher wattage drivers and feed multiple fixtures with less drivers; fixtures need to be wired in parallel.

**Wattages (CC/CV):** 4W/5W (2.1" & 2.5") – 8W/9W (3.3" & 3.8") – 12W (4.9" & 5.4" - CC Only)

**Cable:** Fixture comes with 3.28' of power cable and built-in Aquastop® (anti-wicking) system

**IP rating:** IP68 for temporary submersion up to 15' depth for up to a maximum of 90 mins.

**IK rating:** IK 10

**ETL Certification:** ETL, wet location

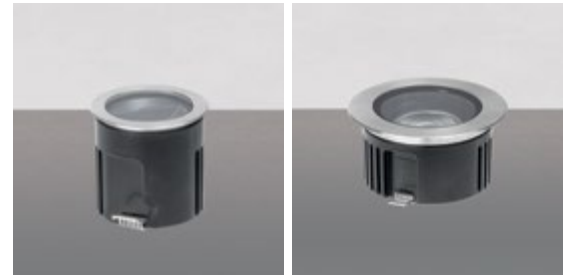
**Optics:** Fixed or Adjustable (optic adjustability from side of fixture, which avoids having to open the trim). Available in Spot – Flood – Wide Flood – Elliptical. Some variants can also mount Honeycomb and Anti-glare (Dark Light) accessories.

**Color temperatures:** 2700K – 3000K – 4000K.

**CRI:** 80+

**Lumen Maintenance:** L70 projections tested at Tj 65° C and Ta 25°.

**Warranty:** 5-year Limited Warranty on fixtures. 1-year Limited Warranty on Remote Drivers.



2.1" 4W C.C. / 5W C.V.

2.5" 4W C.C. / 5W C.V.



3.3" 8W C.C. / 9W C.V.

3.8" 8W C.C. / 9W C.V.



4.9" 12W C.C.

5.4" 12W C.C.

Delivered Lumens*	2.1"/2.5"	3.3"/3.8"	4.9"/5.4"
Spot	307	852	1455
Flood	271	895	1380
Wide Flood	299	811	1385
Elliptical	335	NA	NA

\*Values shown for 3000K

Ordering Information							(Required)	
Product	Trim	Type	Diameter	Wattage/Operation	Color Temp	Optic	Housing <sup>5</sup>	Driver <sup>5</sup>
OR = ORMA	FT = Flush Trim St. Steel <sup>1</sup>  SFST = Semi-Flush St. Steel Trim <sup>2</sup>  SFBT = Semi-Flush Brass Trim <sup>2</sup>	F = Fixed FHC = Fixed HoneyComb FDL = Fixed DarkLight  A = Adjustable AHC = Adjustable HoneyComb <sup>3</sup>	21 = 2.1" (FT)	4 CC = 4W / Constant Current (350mA) 5 CV = 5W / Constant Voltage (24VDC)	27 = 2700K 30 = 3000K 40 = 4000K	SP = Spot FL = Flood WFL = Wide Flood EL = Elliptical <sup>4</sup>	E99650 (2.1" 2.5") E99560 (2.1" 2.5") E83251 (2.1" 2.5") E99855 (2.1") E99651 (3.3" 3.8") E83252 (3.3" 3.8") E99563 (3.3") E99856 (3.3") E99652 (4.9" 5.4") E83253 (4.9" 5.4") E99564 (4.9") E99857 (4.9")	<b>CC:</b> ECO30W-XXX SOLO50W-XXX SOLO100W-XXX  <b>CV:</b> OT96-D010 DI96-24V-JBX- DPH-D010
			25 = 2.5" (SFST/ SFBT)	4 CC = 4W / Constant Current (350mA) 5 CV = 5W / Constant Voltage (24VDC)				
			33 = 3.3" (FT)	8 CC = 8W / Constant Current (220mA) 9 CV = 9W / Constant Voltage (24VDC)				
			38 = 3.8" (SFST/ SFBT)	8 CC = 8W / Constant Current (220mA) 9 CV = 9W / Constant Voltage (24VDC)				
			49 = 4.9" (FT)	12 CC = 12W / Constant Current (350mA)				
			54 = 5.4" (SFST/ SFBT)	12 CC = 12W / Constant Current (350mA)				

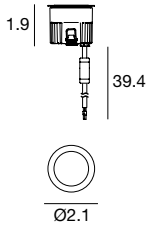
<sup>1</sup> 2.1", 3.3", 4.9" ONLY    <sup>3</sup> N/A in 2.1" or 2.5"

<sup>2</sup> 2.5", 3.8", 5.4" ONLY

<sup>4</sup> Fixed 2.1" and 2.5" ONLY

<sup>5</sup> See page 2

## 2.1" 4W C.C. DC - 350mA / 5W C.V. DC - 24 VDC



### HOUSING OPTIONS (pick one)

#### E99650

Concrete Housing  
PVC



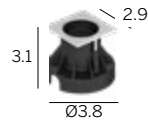
#### E99560<sup>1</sup>

Round Vandal  
Resistant Housing  
PVC



#### E99855<sup>1</sup>

Square Vandal  
Resistant Housing  
PVC



#### E83251

Tile Housing  
PVC



### DRIVER OPTIONS (pick one)

#### C.C. Power supply options (remote only)

##### ECO30W-350

0-10V EldoLED  
ECOdrive 30W  
for 1-3 fixtures

##### SOLO50W-350

0-10V EldoLED  
SOLOdrive 50W  
for 1-6 fixtures

##### SOLO100W-350

0-10V EldoLED  
SOLOdrive 100W  
for 1-12 fixtures

#### C.V. Power supply options (remote only)

##### OT96-D010

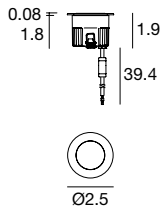
Osram, 10% 0-10V dim, 96W,  
24VDC, 120-277VAC, supplied  
in a Dry location enclosure

##### D196-24V-JBX-DPH-D010

96W, 24VDC, Forward Phase or  
0-10V 0.1% dimming, wet location

<sup>1</sup> Note: Vandal resistant housings make the Flush Trim fixtures become Semi-flush Trim.

## 2.5" C.C. 4W DC - 350mA / 5W C.V. DC - 24 VDC



### HOUSING OPTIONS (pick one)

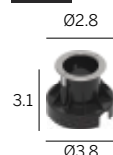
#### E99650

Concrete Housing  
PVC



#### E99560<sup>1</sup>

Round Vandal  
Resistant Housing  
PVC



#### E83251

Tile Housing  
PVC



### DRIVER OPTIONS (pick one)

#### C.C. Power supply options (remote only)

##### ECO30W-350

0-10V EldoLED  
ECOdrive 30W  
for 1-3 fixtures

##### SOLO50W-350

0-10V EldoLED  
SOLOdrive 50W  
for 1-6 fixtures

##### SOLO100W-350

0-10V EldoLED  
SOLOdrive 100W  
for 1-12 fixtures

#### C.V. Power supply options (remote only)

##### OT96-D010

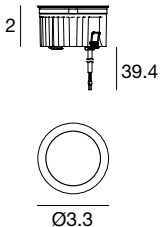
Osram, 10% 0-10V dim, 96W,  
24VDC, 120-277VAC, supplied  
in a Dry location enclosure

##### D196-24V-JBX-DPH-D010

96W, 24VDC, Forward Phase or  
0-10V 0.1% dimming, wet location

<sup>1</sup> Note: Vandal resistant housings make the Flush Trim fixtures become Semi-flush Trim.

## 3.3" 8W C.C. DC - 220mA / 9W C.V. DC - 24 VDC



### HOUSING OPTIONS (pick one)

#### E99651

Concrete Housing  
PVC



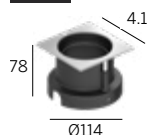
#### E99563<sup>1</sup>

Round Vandal  
Resistant Housing  
PVC



#### E99856<sup>1</sup>

Square Vandal  
Resistant Housing  
PVC



#### E83252

Tile Housing  
PVC



### DRIVER OPTIONS (pick one)

#### C.C. Power supply options (remote only)

##### ECO30W-220

0-10V EldoLED  
ECOdrive 30W  
for 1 fixture

##### SOLO50W-220

0-10V EldoLED  
SOLOdrive 50W  
for 1-2 fixtures

##### SOLO100W-220

0-10V EldoLED  
SOLOdrive 100W  
for 1-4 fixtures

#### C.V. Power supply options (remote only)

##### OT96-D010

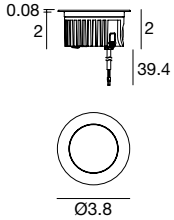
Osram, 10% 0-10V dim, 96W,  
24VDC, 120-277VAC, supplied  
in a Dry location enclosure

##### D196-24V-JBX-DPH-D010

96W, 24VDC, Forward Phase or  
0-10V 0.1% dimming, wet location

<sup>1</sup> Note: Vandal resistant housings make the Flush Trim fixtures become Semi-flush Trim.

## 3.8" C.C. 8W DC - 220mA / 9W C.V. DC - 24 VDC



### HOUSING OPTIONS (pick one)

**E99651**  
Concrete Housing  
PVC



**E83252**  
Tile Housing  
PVC



### DRIVER OPTIONS (pick one)

#### C.C. Power supply options (remote only)

**ECO30W-220**  
0-10V EldoLED  
ECODrive 30W  
for 1 fixture

**SOLO50W-220**  
0-10V EldoLED  
SOLOdrive 50W  
for 1-2 fixtures

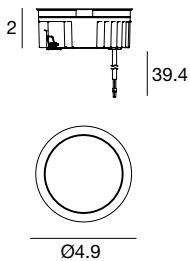
**SOLO100W-220**  
0-10V EldoLED  
SOLOdrive 100W  
for 1-4 fixtures

#### C.V. Power supply options (remote only)

**OT96-D010**  
Osram, 10% 0-10V dim, 96W,  
24VDC, 120-277VAC, supplied  
in a Dry location enclosure

**DI96-24V-JBX-DPH-D010**  
96W, 24VDC, Forward Phase or  
0-10V 0.1% dimming, wet location

## 4.9" 12W C.C. DC - 350mA



### Housing OPTIONS (pick one)

**E99652**  
Concrete Housing  
PVC



**E99564<sup>1</sup>**  
Round Vandal  
Resistant Housing  
PVC



**E99857<sup>1</sup>**  
Square Vandal  
Resistant Housing  
PVC



**E83253**  
Tile Housing  
PVC



### DRIVER OPTIONS (pick one)

#### C.C. Power supply options (remote only)

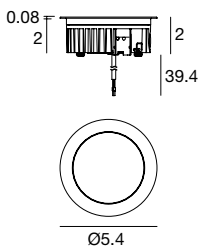
**ECO30W-350**  
0-10V EldoLED  
ECODrive 30W  
for 1 fixture

**SOLO50W-350**  
0-10V EldoLED  
SOLOdrive 50W  
for 1-2 fixtures

**SOLO100W-350**  
0-10V EldoLED  
SOLOdrive 100W  
for 1-4 fixtures

<sup>1</sup> Note: Vandal resistant housings make the Flush Trim fixtures become Semi-flush Trim.

## 5.4" C.C. 12W DC - 350mA



### Housing OPTIONS (pick one)

**E99652**  
Concrete Housing  
PVC



**E83253**  
Tile Housing  
PVC



### DRIVER OPTIONS (pick one)

#### C.C. Power supply options (remote only)

**ECO30W-350**  
0-10V EldoLED  
ECODrive 30W  
for 1 fixture

**SOLO50W-350**  
0-10V EldoLED  
SOLOdrive 50W  
for 1-2 fixtures

**SOLO100W-350**  
0-10V EldoLED  
SOLOdrive 100W  
for 1-4 fixtures