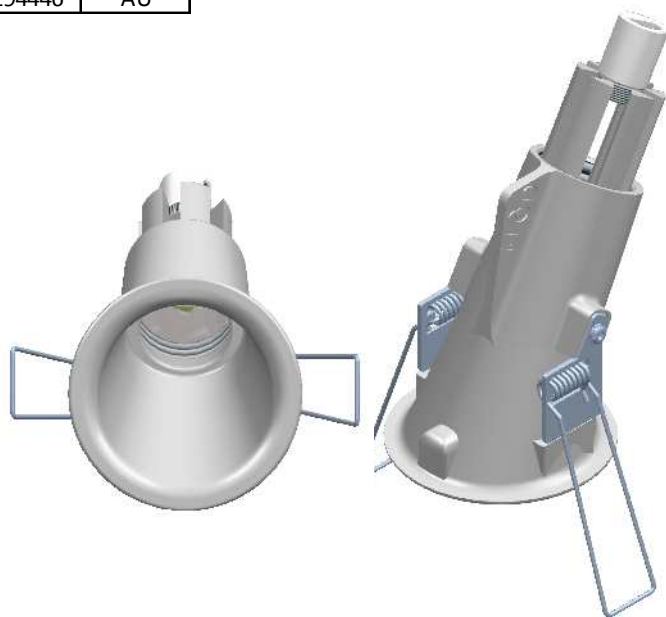


Data Sheet

Code	Finish
E95999	WH
E96000	BK
E96001	GR
E94446	AU



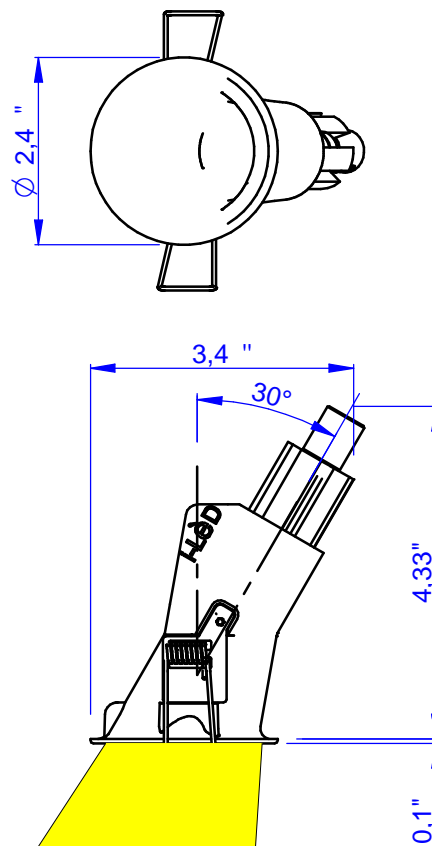
Finish

EMBOSSED WHITE (WH)
EMBOSSED BLACK (BK)
EMBOSSED GRAY (GR)
GOLD (AU)

Product Description

Recessed round spotlight with multichip LED source. Oblique body made of die-cast aluminum and then powder coated in white, black, gray embossed or gold through galvanic process. Die-cast aluminum heatsink. LED light source available in two versions (Tab.), methacrylate optics. Thin PET UV filter which improves the definition of the cone of light and avoid any unaesthetic due to parasitic light. Article equipped with torsion springs in coated steel with protective silicone rubber. Installation in plasterboard / ceiling. The peculiarities of this article are the far back of the optic unit, which dramatically reduces glare, and the refined design with flange "organic." Power supply remote.

DIMENSIONS



LED White :
4000K - 3500K - 3000K - 2700K

Color LED :
-

Optic :
15° - 30° - 45°

LED RGB :
No

Optic :
-

Applications

Indoor Spotlights

LED TYPE :

LED Cree XML - CRI80

LED Type	n° Led	Lumen * LM80				Nominal Power
		4000K	3500K	3000K	2700K	
XML	1	650	614	588	557	6W

* Value of the luminous flux from the LED data sheet.

Resin: No

Cable included: Yes

Cable type: 11,8" 2x22AWG red/blue cables

Input (V - mA) : 500mA

Watt nominal power: 6W

Real power: Nominal Power

Dimmable: Yes

Temperature on the surface of the glass: 40°C

Adjustability: No

Drive: No

Glow Wire: 850°

Power supply: Remote

Class: Class 2

IP: 44

IK: 03

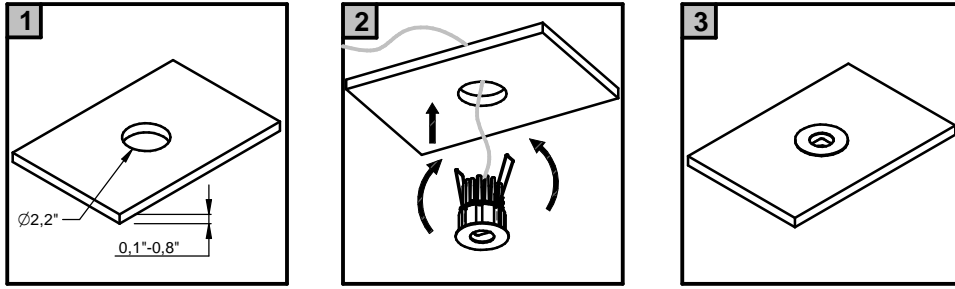
Weight(kg): 0,24 Lbs

Volume: 73"³

✓ : OK

ETL : OK

QUANTUM-Y 6W



THIS PRODUCT MUST BE INSTALLED IN ACCORDANCE WITH THE APPLICABLE INSTALLATION CODE BY A PERSON FAMILIAR WITH THE CONSTRUCTION AND OPERATION OF THE PRODUCT AND THE HAZARDS INVOLVED

MOUNTING INSTRUCTIONS

READ ALL OF THESE INSTRUCTIONS BEFORE INSTALLING FIXTURES

- Keep all of the instructions for future reference
- Turn off power before installing fixture
- Installation is to be performed by a qualified electrician only
- All installations must conform to the National Electrical Code as well as all local jurisdictional codes and regulations
- Any modification of the luminaire will void any and all written or implied warranties
- The manufacture accepts no responsibility for damage to persons or property arising through improper use or installation

INSTALLATION SEQUENCE

- Mount remote driver in accessible well ventilated space (1b)
- Ensure power is off before connecting driver to line voltage
- Rough in secondary wiring above ceiling to fixture location
- Cut correct size opening in ceiling (1a)
- Connect secondary wiring to fixture wiring
- Set tilt (IF ANY)
- Insert fixture into ceiling opening, fastening with spring clips

WARNING - Be sure secondary wiring is connected to driver BEFORE energizing to avoid LED failure

- Energize