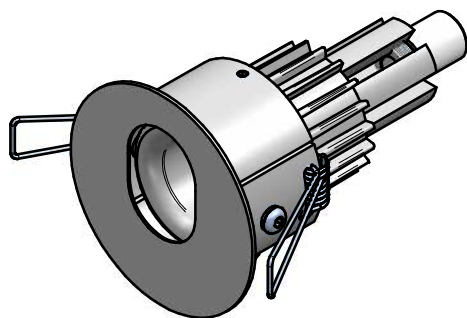


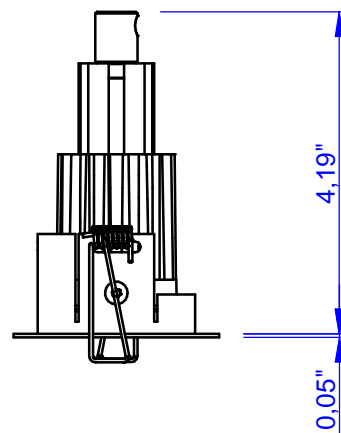
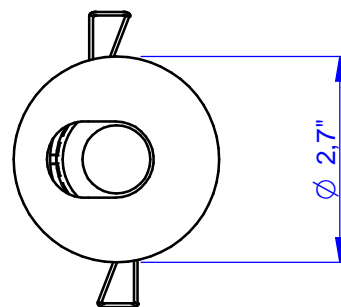
Code	Finish
E95984	WH
E95985	BK
E95986	GR
E96438	AU



Finish

EMBOSSSED WHITE (WH)
EMBOSSSED BLACK (BK)
EMBOSSSED GREY (GR)
GOLD (AU)

DIMENSIONS



Product Description

Recessed round spotlight with LED multichip light source, tilting optic group. Body made of machined aluminum and then powder coated in white, black, gray or gold through galvanic process. Aluminum heatsink tumbled on the back. LED light source available in two versions (Tab.), methacrylate optics. Tilting of 25° with respect to the vertical axis from one side only. Thin PET UV filter which improves the definition of the cone of light and avoid any unaesthetic due to parasitic light. Article equipped with torsion springs in coated steel with protective silicone rubber. Installation in plasterboard / ceiling. Set back of the optic unit dramatically reduces glare, minimal design with very thin flange. Power supply remote. There is provided a plastic accessory for facilitating the positioning of the inner bulb, and then the tilting.

LED White :
4000K - 3500K - 3000K - 2700K

Color LED :
-

Optic :
15°-30°

LED RGB :
No

Optic :
-

Applications

Indoor Spotlights

LED TYPE :

LED Cree XML - CRI80

LED Type	n° Led	Lumen* LM80				Nominal Power
		4000K	3500K	3000K	2700K	
XML	1	650	612	588	557	6W

* Value of the luminous flux from the LED data sheet.

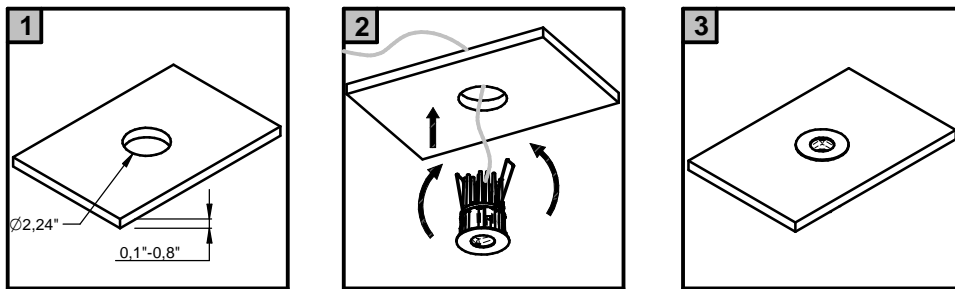
Resin: No
Cable included: Yes
Cable type: 11,8" 2X22AWG red/blue cables
Input (V - mA) : 500mA
Watt nominal power: 6W
Real power: Nominal Power
Dimmable: Yes
Temperature on the surface of the glass: 40°C

Adjustability: Yes
Drive-over: No
Glow Wire: 850°
Power supply: Remote
Class: Class 2
IP 44
IK 03
Weight(kg): 0,37 Lbs
Volume: 74"³

VF : OK

ELV OK

QUANTUM-J 6W



THIS PRODUCT MUST BE INSTALLED IN ACCORDANCE WITH THE APPLICABLE INSTALLATION CODE BY A PERSON FAMILIAR WITH THE CONSTRUCTION AND OPERATION OF THE PRODUCT AND THE HAZARDS INVOLVED

MOUNTING INSTRUCTIONS

READ ALL OF THESE INSTRUCTIONS BEFORE INSTALLING FIXTURES

- Keep all of the instructions for future reference
- Turn off power before installing fixture
- Installation is to be performed by a qualified electrician only
- All installations must conform to the National Electrical Code as well as all local jurisdictional codes and regulations
- Any modification of the luminaire will void any and all written or implied warranties
- The manufacture accepts no responsibility for damage to persons or property arising through improper use or installation

INSTALLATION SEQUENCE

- Mount remote driver in accessible well ventilated space (1b)
- Ensure power is off before connecting driver to line voltage
- Rough in secondary wiring above ceiling to fixture location
- Cut correct size opening in ceiling (1a)
- Connect secondary wiring to fixture wiring
- Set tilt (IF ANY)
- Insert fixture into ceiling opening, fastening with spring clips

WARNING - Be sure secondary wiring is connected to driver BEFORE energizing to avoid LED failure

- Energize