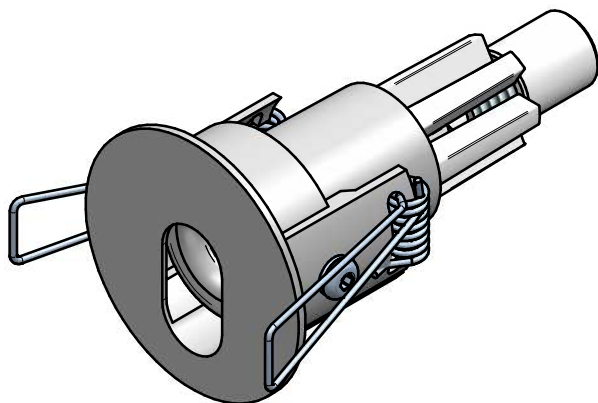
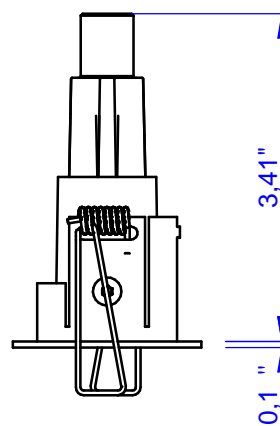
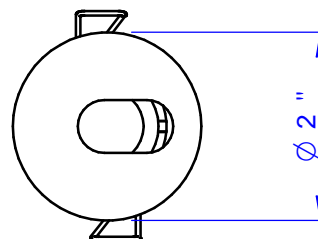


## Data Sheet

FINISHES	CODE
WH	E95987
BK	E95988
GR	E95989
AU	E96437



## DIMENSIONS



## Finiture / Finish

EMBOSSSED WHITE (WH)  
EMBOSSSED BLACK (BK)  
EMBOSSSED GREY (GR)  
GOLD (AU)

## Product Description

Recessed round small spotlight, titling optics. Body made of machined aluminum and then powder coated in white, black, gray embossed or gold through galvanic process. Aluminum heatsink tumbled on the back. Single LED light source. Polycarbonate optics. Thin PET UV filter which improves the definition of the cone of light and avoid any unaesthetic due to parasitic light. Tilting of 25° with respect to the vertical axis from one side only. Article equipped with nickel-plated steel torsion spring for installation in plasterboard/false ceiling. Set back of the optic unit dramatically reduces glare, minimal design with verty thin flange. Power supply remote. There is provided a plastic accessory for facilitating the positioning of the inner bulb, and then the tilting.

LED White :  
4000K - 3500K - 3000K - 2700K

Color LED :

-

Optic :  
08° - 15° - 30° - 45°

LED RGB :

-

Optic :

-

## Applications

Indoor Spotlights

## LED TYPE :

LED Cree XPG - CRI 80

LED Type	n°led	Lumen* LM80				Nominal Power
		4000K	3500K	3000K	2700K	
XPG CRI80	1	222	215	208	195	2W

\* Value of the luminous flux from the LED data sheet.

Resin: No

Cable included: Yes

Cable type: 11,8" 2X22AWG red/blue cables

Input (V - mA) : 630mA

Watt nominal power: 2W

Real power: Nominal Power

Dimmable: Yes

Temperature on the surface of the glass: 40°C

Adjustability: Yes, 25°

Drive-over: No

Glow Wire: 850°

Power supply: Remote

Class: Class 2

IP 44

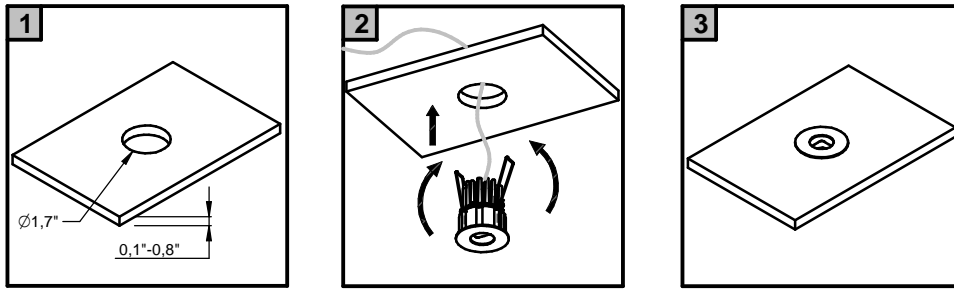
IK 03

Weight(kg): 0,18 Lbs

Volume: 40"³

✓ : OK

✓ : OK



THIS PRODUCT MUST BE INSTALLED IN ACCORDANCE WITH THE APPLICABLE INSTALLATION CODE BY A PERSON FAMILIAR WITH THE CONSTRUCTION AND OPERATION OF THE PRODUCT AND THE HAZARDS INVOLVED

## MOUNTING INSTRUCTIONS

READ ALL OF THESE INSTRUCTIONS BEFORE INSTALLING FIXTURES

- Keep all of the instructions for future reference
- Turn off power before installing fixture
- Installation is to be performed by a qualified electrician only
- All installations must conform to the National Electrical Code as well as all local jurisdictional codes and regulations
- Any modification of the luminaire will void any and all written or implied warranties
- The manufacture accepts no responsibility for damage to persons or property arising through improper use or installation

## INSTALLATION SEQUENCE

- Mount remote driver in accessible well ventilated space (1b)
- Ensure power is off before connecting driver to line voltage
- Rough in secondary wiring above ceiling to fixture location
- Cut correct size opening in ceiling (1a)
- Connect secondary wiring to fixture wiring
- Set tilt (IF ANY)
- Insert fixture into ceiling opening, fastening with spring clips

WARNING - Be sure secondary wiring is connected to driver BEFORE energizing to avoid LED failure

- Energize