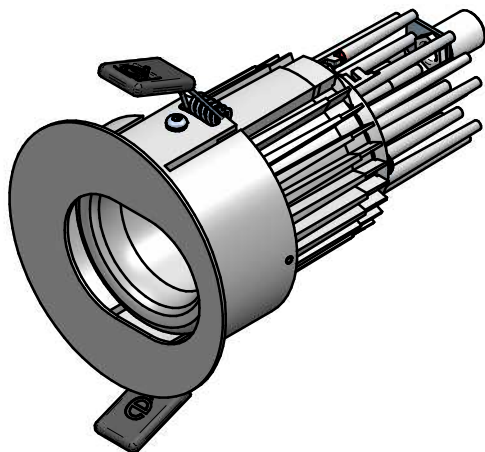


Data Sheet

CODE	FINISH	CRI
E95993	WH	83
E95994	BK	83
E95995	GR	83
E96439	AU	83
E95978	WH	95
E95979	BK	95
E95980	GR	95
E96440	AU	95



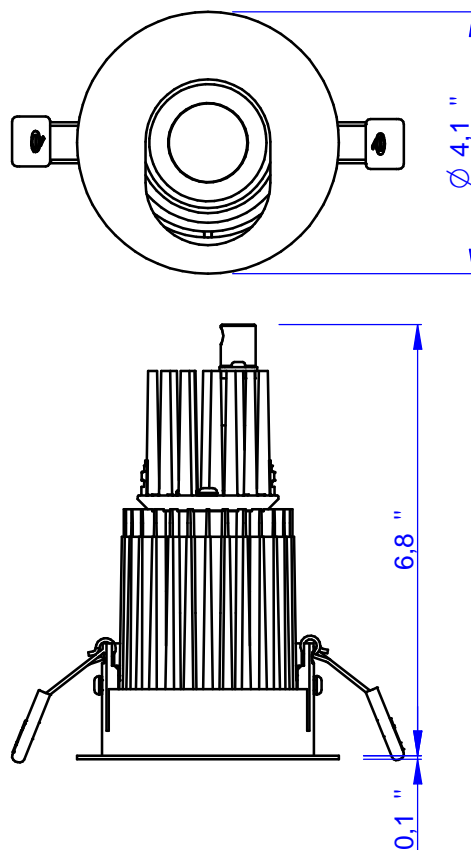
Finish

EMBOSSSED WHITE (WH)
EMBOSSSED BLACK (BK)
EMBOSSSED GREY (GR)
GOLD (AU)

Product Description

Recessed tilting round spotlight with powerLEDs. Body made of machined aluminum and then powder coated in white, black, gray embossed. Aluminum heatsink tumbled on the back or gold through galvanic process. LED light source available in two versions (CRI83 - CRI85). Tilting of 25° with respect to the vertical axis from one side only. Optical unit consisting of metallised polycarbonate reflector to extract the maximum amount of light, anti-UV PET filter to clean the beam, glass lens to direct the beam. Article equipped with torsion springs in coated steel with protective silicone rubber. Installation in plasterboard / ceiling. Set back of the optic unit dramatically reduces glare, minimal design with very thin flange. Power supply remote.

DIMENSIONS



LED White :
4000K - 3500K - 3000K - 2700K

Color LED :
-

Optic :
15° - 30° - 45°

LED RGB :
-

Optic :
-

Applications

Indoor Spotlights

LED TYPE :

Cree MTG - CRI83 - CRI95

CRI	n° Led	Lumen* LM80				Nominal Power
		4000K	3500K	3000K	2700K	
83	1	1670	1615	1560	1446	15W
95	1			1160	1070	15W

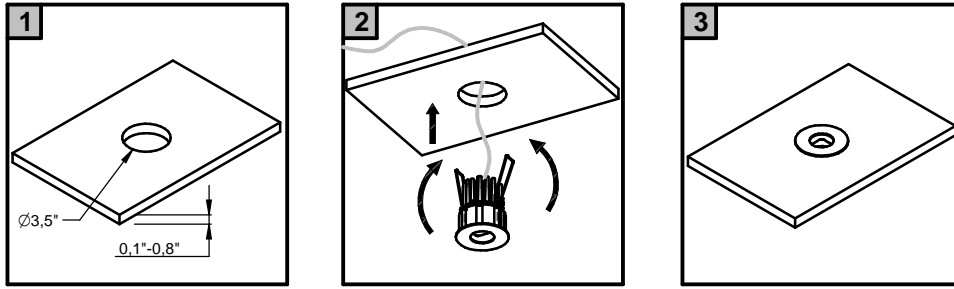
* Value of the luminous flux from the LED data sheet.

Resin: No
Cable included: Yes
Cable type: 11,8" 2x22AWG red/blue cables
Input (V - mA) : 400mA
Watt nominal power: 15W
Real power: Nominal Power
Dimmable: Yes
Temperature on the surface of the glass: 40°C

Adjustability: Yes
Drive-over: No
Glow Wire: 850°
Power supply: Remote
Class: Class 2
IP 44
IK 03
Weight(kg): 1,41 Lbs
Volume: 134"³



QUANTUM -J (15W)



THIS PRODUCT MUST BE INSTALLED IN ACCORDANCE WITH THE APPLICABLE INSTALLATION CODE BY A PERSON FAMILIAR WITH THE CONSTRUCTION AND OPERATION OF THE PRODUCT AND THE HAZARDS INVOLVED

MOUNTING INSTRUCTIONS

READ ALL OF THESE INSTRUCTIONS BEFORE INSTALLING FIXTURES

- Keep all of the instructions for future reference
- Turn off power before installing fixture
- Installation is to be performed by a qualified electrician only
- All installations must conform to the National Electrical Code as well as all local jurisdictional codes and regulations
- Any modification of the luminaire will void any and all written or implied warranties
- The manufacture accepts no responsibility for damage to persons or property arising through improper use or installation

INSTALLATION SEQUENCE

- Mount remote driver in accessible well ventilated space (1b)
- Ensure power is off before connecting driver to line voltage
- Rough in secondary wiring above ceiling to fixture location
- Cut correct size opening in ceiling (1a)
- Connect secondary wiring to fixture wiring
- Set tilt (IF ANY)
- Insert fixture into ceiling opening, fastening with spring clips

WARNING - Be sure secondary wiring is connected to driver BEFORE energizing to avoid LED failure

- Energize