

Mini Z Cove 20 Linear LED

Specifications

inter•lux



Ordering Information

WG-MZC20L								P	
Model	Type	Length	LED ³	Color ⁴	Voltage	Power ⁵	Diffuser ⁶	Mount	Options
WG-MZC20L	S ¹ PC ² PR ² PZ ²	A A x B A x B x C A x B x A x B	L M	827 830 835 840 927 930 935 940	UNV 120	S D010 D3W DES DFPN	OD (std) SD	P	C4 C10 C20 C30 DL

Luminaire

- Miniature continuous perimeter light with knife edge detail.
- White LED light source.
- Standard Opal Diffuser for even illumination and no LED appearance. Satin Diffuser for high efficiency and minimal LED appearance.
- Lengths and angles factory cut to exact field dimensions.
- Powder coat painted white - RAL 9010.
- 4' class 2 plenum rated feed cable standard (Options – "C4").

Type

- S = Straight run¹
- PC = Standard patterns coffer 2, 3 or 4 sided with 90° corners²
- PR = Standard patterns raft 2, 3 or 4 sided with 90° corners²
- PZ = Non-standard patterns and/or corners other than 90°, consult factory²

Length

- A, B, C = specify feet & inches to the nearest 0.25" (i.e. 6' 5.5") For patterns specify each length (i.e. 2 sided: A x B = 6' 5" x 6'; 3 sided: A x B x C; 4 sided: A x B x A x B)

LED³

- L = Low Power (3.2W/ft)
- M = Mid Power (6.4W/ft)

Color / Lumens⁴

- 80+ CRI minimum (Low/Mid)
- 827 = 2700K, 316/534 lm/ft
 - 830 = 3000K, 343/579 lm/ft
 - 835 = 3500K, 343/579 lm/ft
 - 840 = 4000K, 355/601 lm/ft
 - For 90+ CRI specify 927, 930, etc.

Voltage

- UNV = 120-277V
- 120 = 120V (DFPN only)

Power Supply (remote)⁵

- S = Standard driver, 120-277V
- D010 = 10%, 0-10V dimming, 120-277V
- D3W = Lutron, 1%, 3-wire dimming, 120-277V
- DES = Lutron, 1%, EcoSystem E1/E2 digital dimming, 120-277V
- DFPN = Lutron 1% forward phase with neutral, 120V only

Diffuser⁶

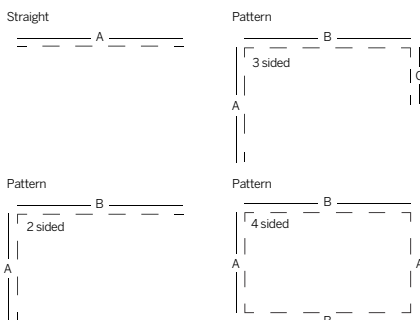
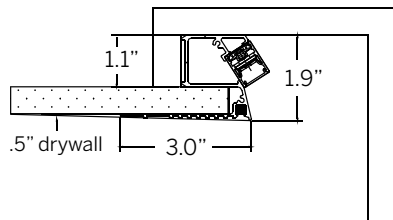
- OD = Opal diffuser (standard)
- SD = Satin diffuser

Mounting

- P = Plaster-in

Options

- C4 = 4' tray cable (plenum rated) (standard)
- C10 = 10' tray cable (plenum rated)
- C20 = 20' tray cable (plenum rated)
- C30 = 30' tray cable (plenum rated)
- DL = Damp location
- To specify multiple options select the appropriate grouped codes from the dropdown e.g. LEC-DL
- Contact factory for emergency lighting options



- 1 Standard setup assumes the cove ends at a perpendicular wall and the LED board is set back from the end to minimize light on the perpendicular wall. Contact us for options.
- 2 See pattern specs sheet.
- 3 Wattage shown does not include power supplies/drivers.
- 4 Lumens for CRI 90(+), are about 16% lower compared to standard CRI 80(+).
- 5 Remote power supply required. See power supply specs sheet.
- 6 Standard Opal Diffuser for even illumination and no LED appearance. Satin Diffuser for high efficiency and minimal LED appearance.