

Vertical Plaster Cove LED

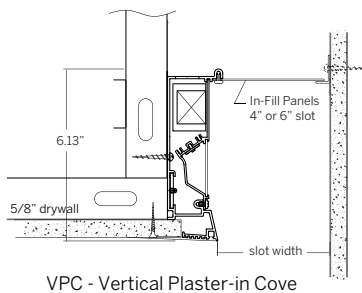
Submittal - 3 Sided Pattern Raft

Project Name _____ SO# _____

Fixture Type _____ PO# _____



Ordering Information										
WG-VPC	PR							SF	P	
Model	Type	Length	LED ³	Color ⁴	Voltage	Power	In-fill	Diffuser	Mount	Options ²
WG-VPC	PR ²	A x B x C	L M H	827 830 835 840 927 930 935 940	UNV 120	S D010 D3W DES	X P4 P6	SF (STD)	P	LEC REC LREC



Luminaire

- Perimeter cove system for linear and pattern applications.
- Trimless 'plaster-in' precision knife edge or bezel for use with suspended or drywall ceilings.
- White LED light source.
- Lengths and angles factory cut to exact field dimensions.
- Powder coat painted white - RAL 9010.
- Flat satin diffuser standard.

Type

- PR = Standard patterns raft 2, 3 or 4 sided with 90° corners²

Length

- A, B, C = specify feet & inches to the nearest 0.25" (i.e. 6' 5.5")

LED³

- L = Low Power (3W/ft)
- M = Mid Power (6W/ft)
- H = High Power (10W/ft)

Color

- 80+ CRI minimum
- 827 = 2700K
 - 830 = 3000K
 - 835 = 3500K
 - 840 = 4000K
 - For 90+ CRI specify 927, 930, etc

Voltage

- UNV = 120-277V
- 120 = 120V (DFPN only)

Power Supply (integral)

- S = Standard driver, 120-277V
- D010 = Osram, 10%, 0-10V dimming, 120-277V
- D3W = Lutron, 1%, 3-wire fluorescent dimming, 120-277V
- DES = Lutron, 1%, EcoSystem E1/E2 digital dimming, 120-277V
- DFPN = Lutron 1% forward phase with neutral, 120V only

In-fill

- X = No in-fill panel
- P4 = 4" in-fill panel
- P6 = 6" in-fill panel

Diffuser

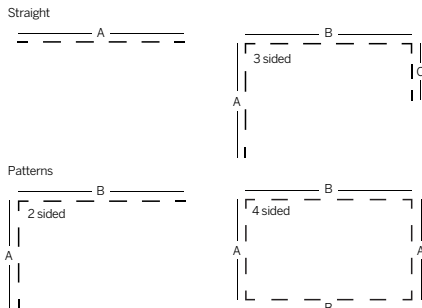
- SF = Satin flat diffuser (standard)

Mounting

- P = Plaster-in

Options²

- LEC = Left end cap
- REC = Right end cap
- LREC = Left & Right end caps
- Contact factory for emergency lighting options



Customer Approval

Company _____

Approved Signature _____

Approved with corrections noted Print Name _____

Revise and Resubmit Date _____

Original Submission Date _____

- 1 Standard setup assumes the cove ends at a perpendicular wall and the led board is set back from the end to minimize light on the perpendicular wall. Contact us for options.
- 2 See pattern specsheet.
- 3 Wattage shown does not include power supplies/drivers.

Vertical Plaster Cove LED

Submittal - 3 Sided Pattern Raft

Project Name _____ SO# _____

Fixture Type _____ PO# _____

System	Qty.	Overall Length		
		'A'	'B'	'C'
1	_____	_____	_____	_____
2	_____	_____	_____	_____
3	_____	_____	_____	_____
4	_____	_____	_____	_____

Customer Approval

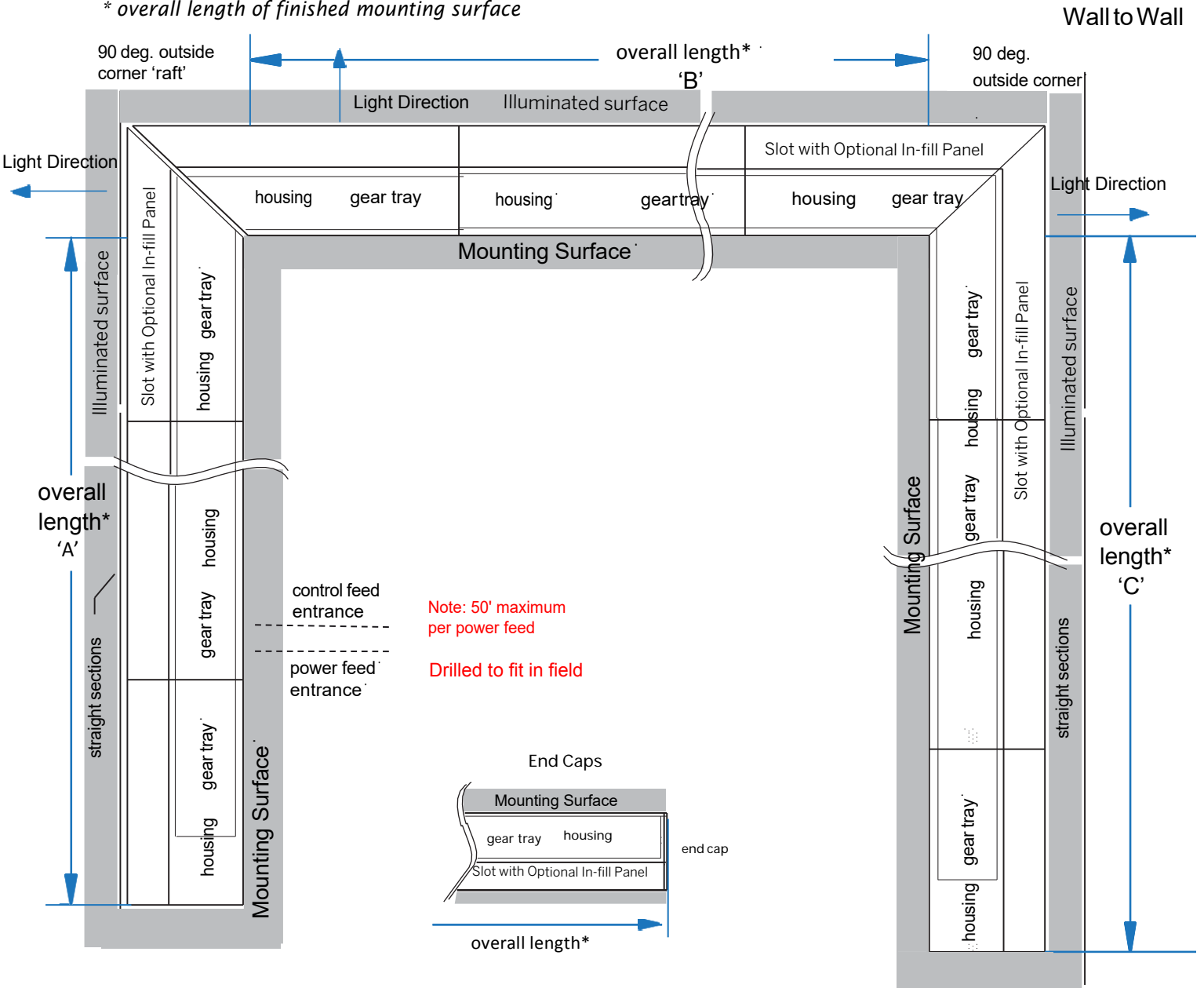
Company _____

Approved Signature _____

Approved with corrections noted Print Name _____

Revise and Resubmit Date _____

* overall length of finished mounting surface



Note: 50' maximum per power feed
Drilled to fit in field