

Mini Edgeless Cove LED

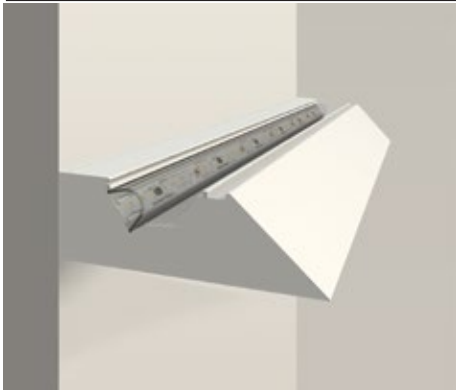
Submittal Pattern - 3 Sided Coffered Corner

Project Name _____

SO # _____

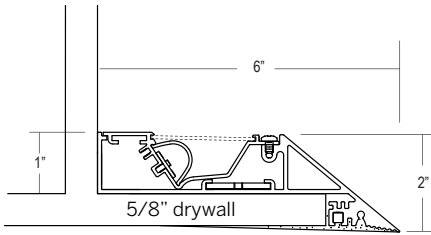
Fixture Type _____

PO# _____



Ordering Information

| Model | Type | Length | LED ³ | Color | Voltage | Power | Diffuser | Mount | Options ² |
|--------|-----------------|-----------|------------------|--|------------------------------------|---|---------------------|-------|----------------------------------|
| WG-MEC | PC | | | | | | | P | |
| WG-MEC | PC ² | A x B x C | L M H | 827 830 835 840 927 930 935 940 | UNV 120 | S D010 D3W DES DFPN | S (STD) OF SF | P | LEC REC LREC LWR RWR |



Luminaire

- Indirect cove system featuring plaster-in precision knife edge for clean, minimal effect.
- White LED light source.
- Lengths and angles factory cut to exact field dimensions.
- Powder coat painted white - RAL 9010.
- Snap-on satin diffuser optimized for forward distribution (standard).

Type

- PC = Standard patterns coffer 2, 3 or 4 sided with 90° corners²

Length

- A, B, C = specify feet & inches to the nearest 0.25" (i.e. 6' 5.5")

LED³

- L = Low Power (3W/ft)
- M = Mid Power (6W/ft)
- H = High Power (10W/ft)

Color

- 80+ CRI minimum
- 827 = 2700K
- 830 = 3000K
- 835 = 3500K
- 840 = 4000K
- For 90+ CRI specify 927, 930, etc

Voltage

- UNV = 120-277V
- 120 = 120V (DFPN only)

Power Supply (remote)

- S = Standard driver, 120-277V
- D010 = Osram, 10%, 0-10V dimming, 120-277V
- D3W = Lutron, 1%, 3-wire fluorescent dimming, 120-277V
- DES = Lutron, 1%, EcoSystem E1/E2 digital dimming, 120-277V
- DFPN = Lutron 1% forward phase with neutral, 120V only

Diffuser

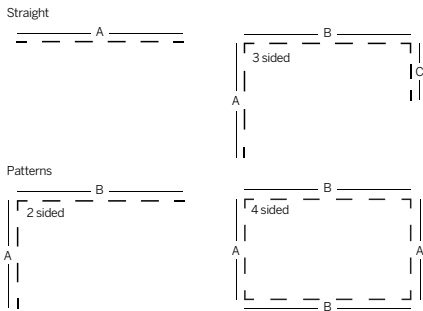
- S = Snap-on satin diffuser (standard)
- OF = Opal flat diffuser⁶
- SF = Satin flat diffuser⁶

Mounting

- P = Plaster-in

Options²

- LEC = Left end cap
- REC = Right end cap
- LREC = Left & Right end caps
- LWR = Left wall return
- RWR = Right wall return
- Contact factory for emergency lighting options



Customer Approval

Company _____

Approved Signature _____

Approved with corrections noted Print Name _____

Revise and Resubmit Date _____

Original Submission Date _____

- 1 Standard setup assumes the cove ends at a perpendicular wall and the led board is set back from the end to minimize light on the perpendicular wall. Contact us for options.
- 2 See pattern specsheet.
- 3 Wattage shown does not include power supplies/drivers.

Mini Edgeless Cove LED

Submittal Pattern-3 Sided Coffered Corner

Project Name _____

SO # _____

Fixture Type _____

PO# _____

| System | Qty. | Overall Length | | |
|--------|-------|----------------|-------|-------|
| | | 'A' | 'B' | 'C' |
| 1 | _____ | _____ | _____ | _____ |
| 2 | _____ | _____ | _____ | _____ |
| 3 | _____ | _____ | _____ | _____ |
| 4 | _____ | _____ | _____ | _____ |

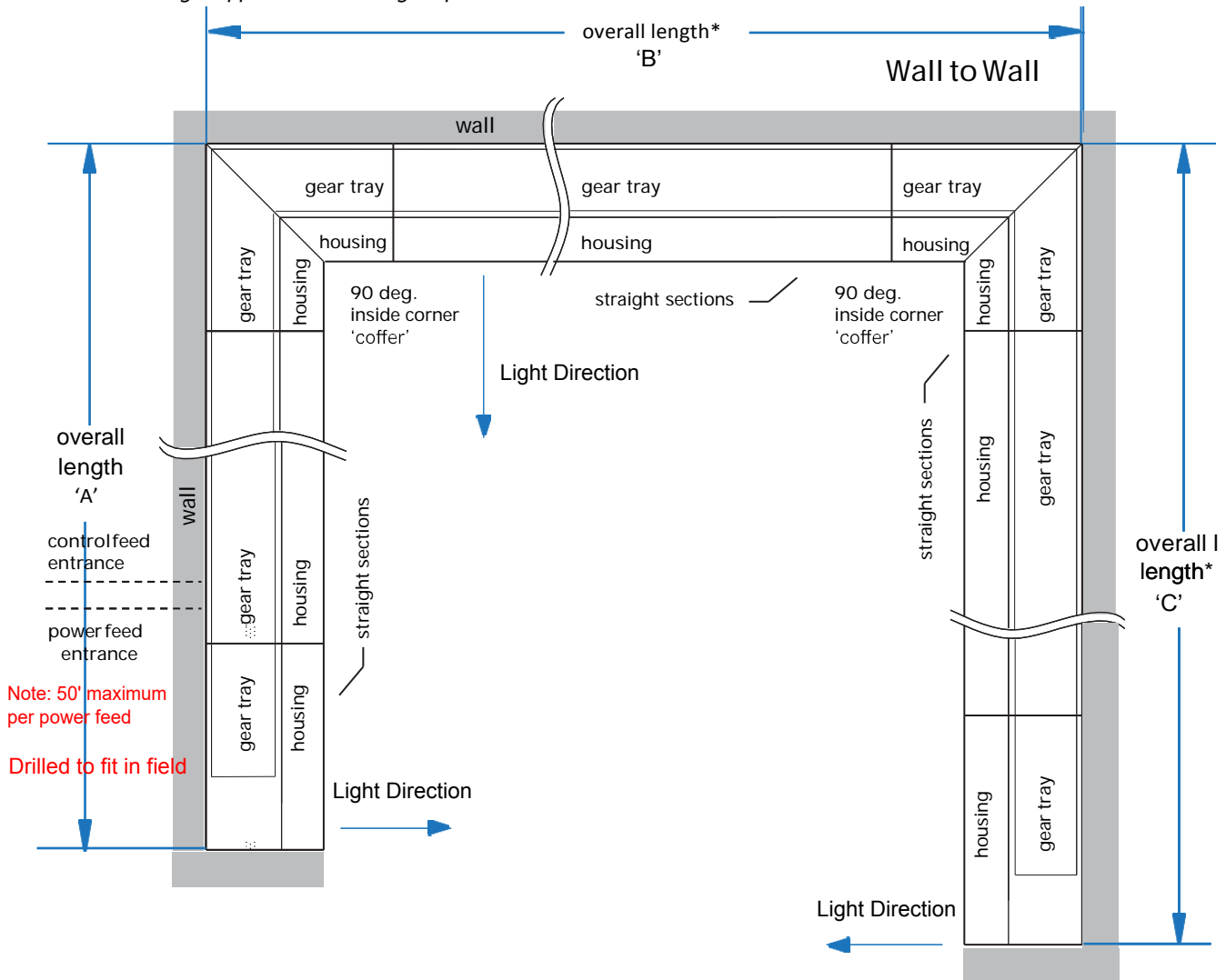
Customer Approval Company _____

Approved Signature _____

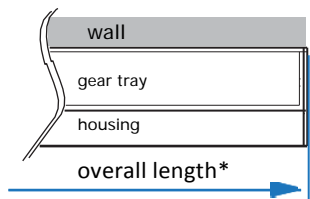
Approved with corrections noted Print Name _____

Revise and Resubmit Date _____

*overall length of finished mounting surface



End Caps



Wall Returns

