

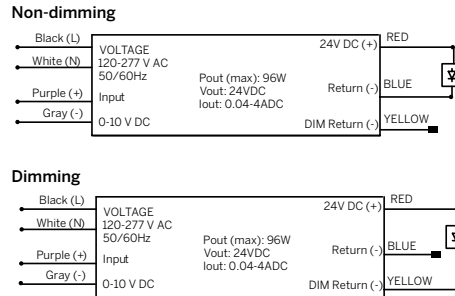
Constant Voltage Power Supplies

Wiring Diagrams

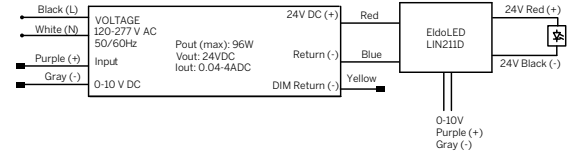
S (Non-dim, Non-Osram)
HT96-S



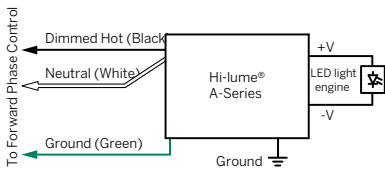
OT96-D010 (Osram, 0 - 10V 1%)
IL-JB12-LED-24006-UNV-D010
OT96-D010



EL96-D010 (0 - 10V 1%)

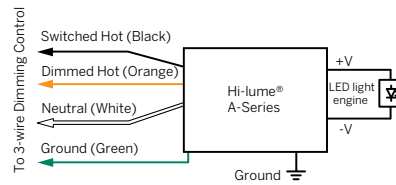


DFPN (1% Lutron forward phase with neutral)
IL-JB-LED-24003-120V-DFPN
LUT40-24V-DFPN

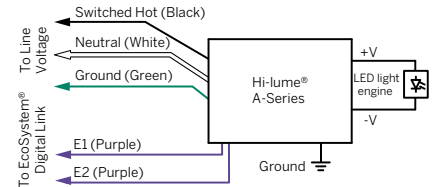


Note: Colors shown correspond to terminal blocks on driver.

D3W (Lutron 1%, 3-wire)
IL-JB-LED-24010-UNV-D3W
LUT40-24V-DES/D3W



DES (Lutron 1% EcoSystem® digital)
IL-JB-LED-24010-UNV-DES
LUT40-24V-DES/D3W



Note: Colors shown correspond to terminal blocks on driver.

Maximum wiring distance*

| Wire gauge | Load per driver | | | |
|------------|-----------------|------|--------|------|
| | Osram | | Lutron | |
| | ≤48W | ≤72W | ≤96W | ≤40W |
| #18AWG | 37' | 25' | 18' | 15' |
| #16AWG | 59' | 39' | 29' | 25' |
| #14AWG | 95' | 63' | 47' | 40' |
| #12AWG | 151' | 101' | 75' | 60' |
| #10AWG | 241' | 160' | 120' | - |

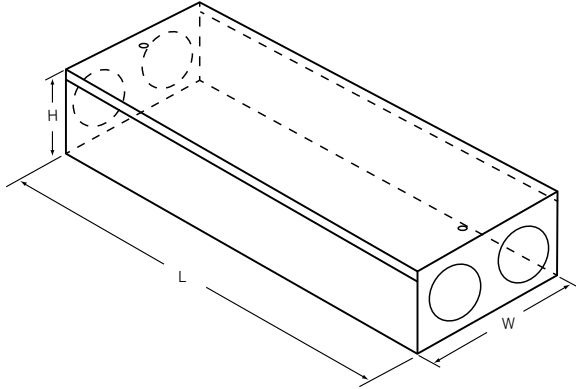
*Voltage drop guide for 24VDC. Actual Voltage drop to be calculated by installer

Notes

1. The exact number of drivers required will depend on the switching layout and the distance between the drivers and the fixtures.
2. Refer to maximum wire distance chart for additional wiring recommendations.
3. 80% maximum load is suggested.

Enclosures (remote)

Standard enclosure supplied with products requiring remote power supply installation.



| Enclosure | L | W | H |
|-----------|--------|------|-------|
| 9" | 9" | 3.7" | 2" |
| 12" | 12" | 3.5" | 2.1" |
| 23" | 23.25" | 3.1" | 2.25" |

Wiring Diagrams

S (Standard non-dim)

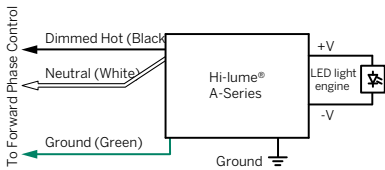


D010 (EldoLED 0-10V)



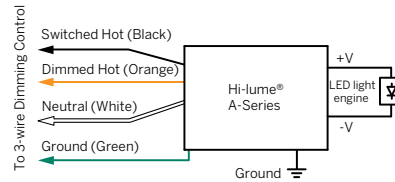
* ECO30W = 1 output
 ECO50W = 1 output
 SOLO50W = 2 outputs
 SOLO100W = 4 outputs

DFPN (1% Lutron forward phase with neutral)

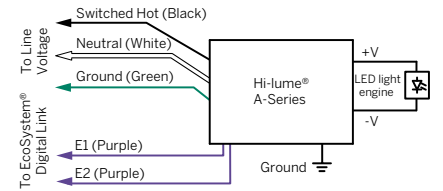


Note: Colors shown correspond to terminal blocks on driver.

DW3 (Lutron 1%, 3-wire)



DES (Lutron 1% EcoSystem® digital)



Note: Colors shown correspond to terminal blocks on driver.

Maximum recommended wiring distance*

| Wire gauge | Maximum Lead Length | | | |
|------------|---------------------|------------------|------------------|------------------|
| | Lutron | | EldoLED | |
| | 200 mA to 700 mA | 710 mA to 1.50 A | 1.51 A to 2.10 A | 1.51 A to 2.10 A |
| #18AWG | 30' | 15' | 10' | 72' |
| #16AWG | 35' | 25' | 15' | 118' |
| #14AWG | 50' | 40' | 25' | 150' |
| #12AWG | 100' | 60' | 40' | 200' |

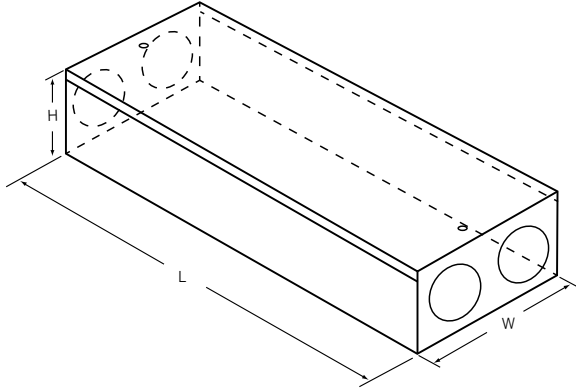
*Voltage drop guide for 24VDC. Actual Voltage drop to be calculated by installer

Notes

1. The exact number of drivers required will depend on the switching layout and the distance between the drivers and the fixtures.
2. Refer to maximum wire distance chart for additional wiring recommendations.

Enclosures (remote)

Standard enclosure supplied with products requiring remote power supply installation.



| Enclosure | L | W | H |
|-----------|--------|------|-------|
| 9" | 9" | 3.7" | 2" |
| 12" | 12" | 3.5" | 2.1" |
| 23" | 23.25" | 3.1" | 2.25" |