

Assembly instruction

SATTLER

DOPPIO LINEA

GENERAL REMARKS ON SAFETY:

Read all of these instructions before installing fixtures.

- Keep all of the instructions for future reference.
- Turn off power before installing fixture.
- Installation is to be performed by a qualified electrician only.
- All installations are to conform to the standards of National Electrical Code as well as all local jurisdictional codes and regulations.
- Any modification of the luminaire will void any and all written or implied warranties.
- Do not open the luminaire - this will void the IP rating
- The manufacturer accepts no responsibility for damage to persons or property arising through improper use or installation.

THIS PRODUCT MUST BE INSTALLED IN ACCORDANCE WITH THE APPLICABLE INSTALLATION CODE BY A PERSON FAMILIAR WITH THE CONSTRUCTION AND OPERATION OF THE PRODUCT AND THE HAZARDS INVOLVED

Technical data:



Housing

Aluminum profile, integrated acrylic cover. Light + Acoustic Version with fabric covering as a light and acoustic diffusor.

Dimension L W H	Fixture Weight	technical-unit Weight
1270 x 23 x 46 mm	2.0 kg	4.0 kg
1550 x 23 x 46 mm	2.5 kg	4.0 kg
2140 x 23 x 46 mm	3.0 kg	4.0 kg
50 x 0.9 x 1.8"	4.8 lbs	8.8 lbs
1550 x 23 x 46 mm	5.5 lbs	8.8 lbs
2140 x 23 x 46 mm	6.6 lbs	8.8 lbs

BOM

Package 1, housing

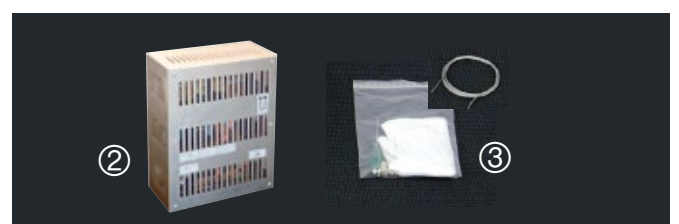
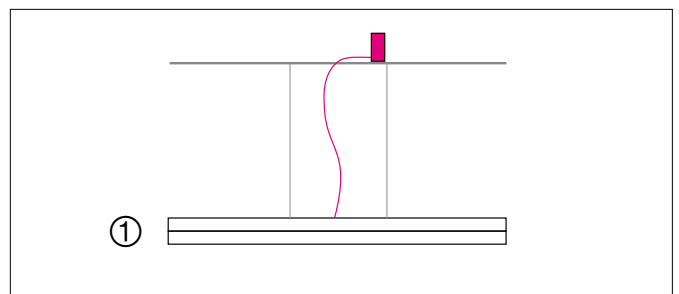
Aluminum housing ① 1 unit

Package 2, technical part

- | | | | |
|--------------------------|------------------------------|---|---------|
| <input type="checkbox"/> | Technical unit | ② | 1 unit |
| <input type="checkbox"/> | Gloves, white | ③ | 1 Pair |
| | Screwdriver | | 1 unit |
| | steel cables 2000 mm / 78.7" | | 2 units |
| | Assembly instruction | | 1 unit |

Option:

- | | | |
|--------------------------|----------------------|--------|
| <input type="checkbox"/> | White, Dimmer 1-10 V | 1 unit |
|--------------------------|----------------------|--------|



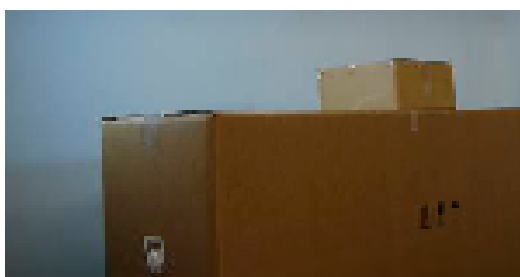
DOPPIO LINEA



Warranty

Use the enclosed assembly instructions for the installation of the lighting fixture. Non-compliance of the assembly instruction will automatically void the warranty.

The supplied light fixture has been tested and is fully operational.

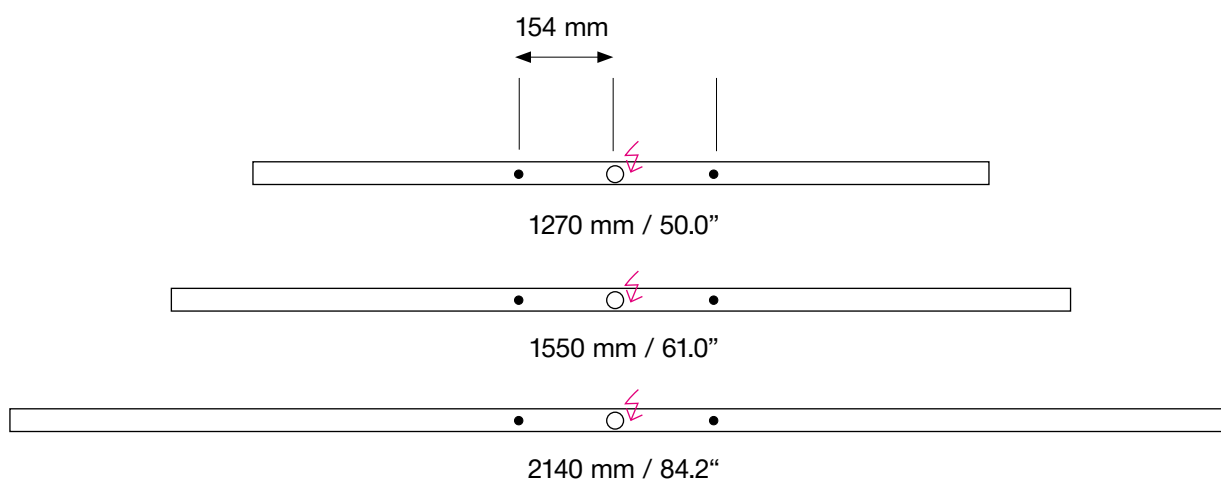


Delivery contains 2 packages

Unpack the light fixture and check the bill of material.

Use enclosed cloth gloves to prevent soiling of polished frame, screws and acrylic.

Suspension Points - 2-point suspension with 1 power supply cable in the middle

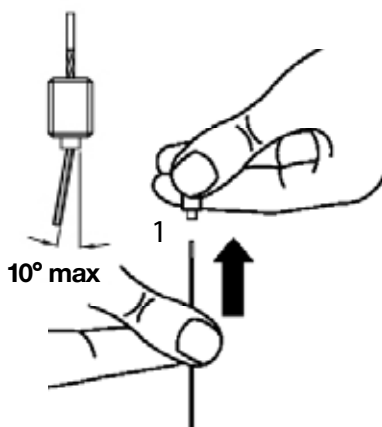
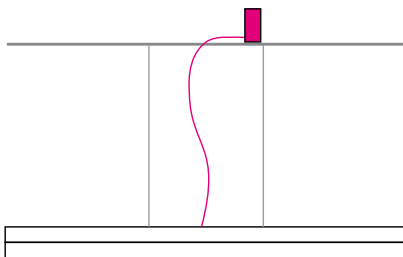


DOPPIO LINEA



1. Installation

suspension with external power supply unit in ceiling (Mounting Version A)



1.1 Attachment of steel cable suspension

Mark anchor position of your light fixture on the ceiling according to drilling template (page 2).

Predrill the anchor points with $\varnothing 1/4"$ (6mm), mount the anchors and attach the steel cable bracket. Please ensure the load capacity of the ceiling is sufficient.

The steel cable bracket supports static loads. Requirement for safe use is an attachment to the ceiling (anchor, hoes, etc.) which is supporting an ultimate load of 100 lbs (45 kg).

Insert the upper ends of the steel cable to the premounted steel cable brackets on the ceiling. Through soft pressure on the spring-loaded nozzle of the steel cable bracket it is smoothly adjustable upward or downward to the desired position. As soon as there is load on the steel cable bracket, it will secure itself and it won't slide in any directions.

To adjust it again: lift the light fixture to relieve load of the steel cable brackets (!), give a soft push with your finger to the nozzle ①, now it is adjustable to any position.

Please make sure that the steel cable is insert at least so far that it is visible at the lower end of the premounted bracket. If required cut the superfluous cable.

Note:

The steel cable brackets are just for indoor use. The nozzle of the steel cable bracket must show noticeable spring loaded pressure. To ensure the full load capacity the cables shouldn't be greasy or rusty.

The steel cable brackets are just for use of supplied steel cables at static load.

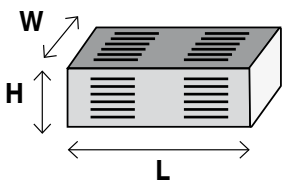
The exit angle of the steel cable at the nozzle should on no account be more than 10°.

DOPPIO LINEA



2.1. Installation of TU (technical unit, Mounting Version A)

Please take note of the numbering on the cables ,when connecting the supply line between TU and light fixture.



Dimensions of external power supply units

Typ	Size mm / inch			For use with Mounting Version
	L	W	H	
DE 1F	360 x	150 x	85 mm / 14.7 x 5.9 x 3.3"	A

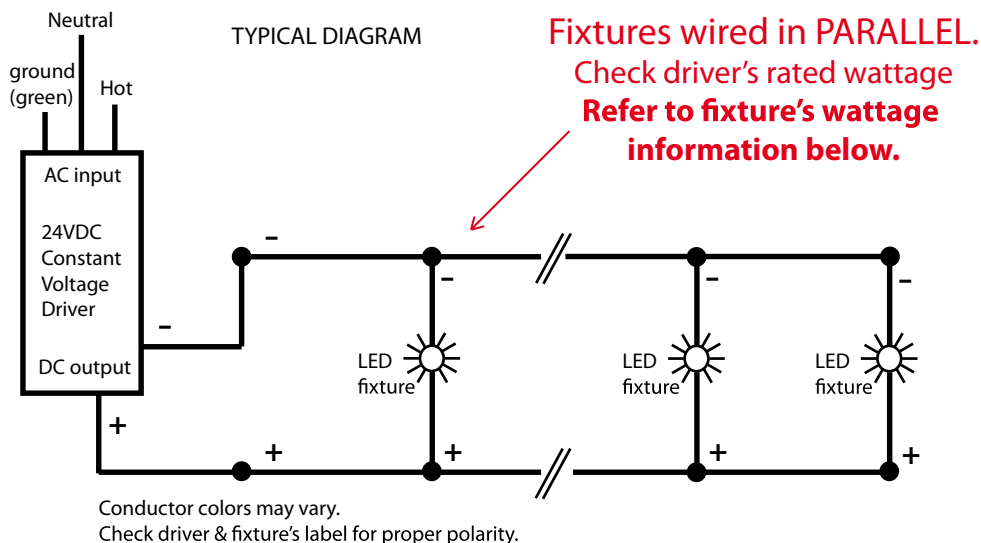
2.2 Connection template

The distance between TU and light fixture should not be more than 30 feet. The connection has to be done in accordance to the terminal assignment. This varies depending on the diameter and the technical composition. Please connect in parallel.

Wiring Key Points

1. This product shall be installed by a qualified electrician.
2. Make sure the main power supply to the driver is turned off when wiring either the LEDs or driver.
3. LEDs shall be wired in parallel as shown in wiring diagram. CAUTION: incorrect wiring may damage LEDs.
4. Wire shall be #18AWG stranded minimum. Large gauge wire shall be used to limit voltage drop in order to maintain the proper operating voltage. Take every precaution to avoid interference from other electrical circuits and equipment.
5. Dimming circuits are more sensitive to voltage drop and electrical interference from other electrical sources.
6. Isolating LED wiring by dedicated circuit for each control zone is recommended.
7. Contractor shall verify the fixture quantities connected to the driver are compatible with the driver's specifications prior to energizing the circuit.
8. All Class II power cable remote wiring and driver enclosures by others.

LED's can be permanently damaged if these points are not followed



Maximum wiring distance*

		Load per driver		
		≤48W	≤72W	≤96W
Wire gauge	#18AWG	37'	25'	18'
	#16AWG	59'	39'	29'
	#14AWG	95'	63'	47'
	#12AWG	151'	101'	75'
	#10AWG	241'	160'	120'

* Voltage drop guide for 24VDC. Actual Voltage drop to be calculated by installer.