

# Assembly instruction

Date: 18.05.2015

SATTLER

## Pendant Light ANGOLO

### GENERAL REMARKS ON SAFETY:

Read all of these instructions before installing fixtures.

- Keep all of the instructions for future reference.
- Turn off power before installing fixture.
- Installation is to be performed by a qualified electrician only.
- All installations are to conform to the standards of National Electrical Code as well as all local jurisdictional codes and regulations.
- Any modification of the luminaire will void any and all written or implied warranties.
- Do not open the luminaire - this will void the IP rating
- The manufacturer accepts no responsibility for damage to persons or property arising through improper use or installation.
- 

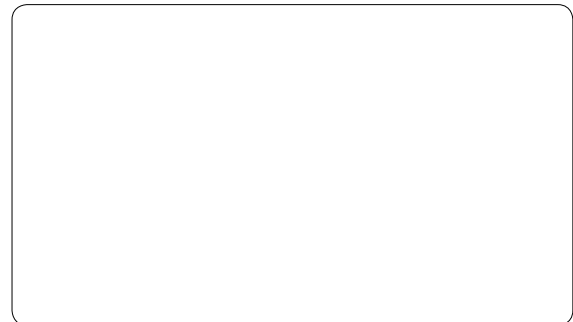
THIS PRODUCT MUST BE INSTALLED IN ACCORDANCE WITH THE APPLICABLE INSTALLATION CODE BY A PERSON FAMILIAR WITH THE CONSTRUCTION AND OPERATION OF THE PRODUCT AND THE HAZARDS INVOLVED



### Dangers

- Verify power is off at installation time.
- Injuries caused by electricity are possible

### Technical data:



#### Frame

Powder coated aluminum housing

| Size:               | Fixture weight | Canopy weight |
|---------------------|----------------|---------------|
| 974 x 790 x 288 mm  | 14 kg          | 2.0 kg        |
| 38.3 x 31.3 x 11.3" | 30.8 lbs       | 4.2 lbs       |

### Bom

quantity

#### Package 1, housing

|                          |   |        |
|--------------------------|---|--------|
| Aluminum housing         | ① | 1 unit |
| 4 steel cables 5m (197") |   |        |

#### Package 2, canopy

|   |   |        |
|---|---|--------|
| <input type="checkbox"/> Canopy with technical unit | ② | 1 unit |
| <input type="checkbox"/> Canopy cover               | ② | 1 unit |

|   |   |        |
|---|---|--------|
| <input type="checkbox"/> Gloves, white        | ③ | 1 pair |
| <input type="checkbox"/> Screwdriver          |   | 1 unit |
| <input type="checkbox"/> Assembly instruction |   | 1 unit |

#### Option:

|  |  |
|--|--|
| <input type="checkbox"/> White, Dimming 1-10 V |  |
| <input type="checkbox"/> Dimming DALI          |  |



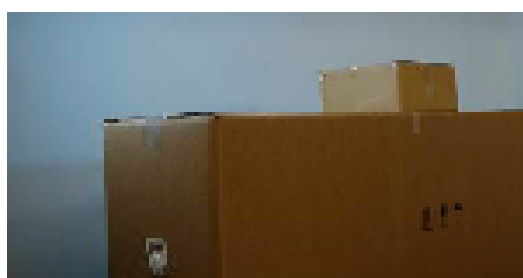
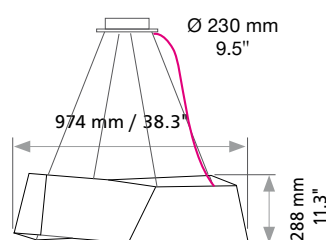
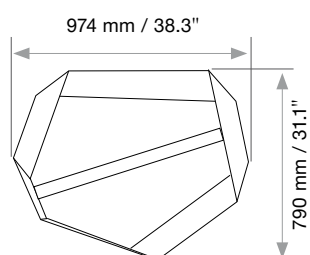
## Pendant Light ANGOLO



### Warranty

Use the enclosed assembly instructions for the installation of the lighting fixture. Non-compliance of the assembly instruction will automatically void the warranty.

The present light fixture has been tested and is fully operational.



### Delivery contains 2 packages

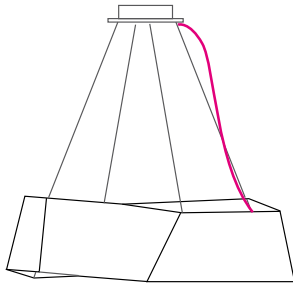
Unpack the light fixture and check completeness according to the bill of material.

Use enclosed cloth gloves to prevent soiling of polished frame, screws and acrylic. Remove protective film from acrylic.

## Pendant Light ANGOLO



### 1. Pendant light with canopy and separate power supply



#### 1.1 Mark anchor positions

Mark anchor position of your canopy on the ceiling according to drilling template, drill the anchor points with .25" (Ø 6mm), mount dowels.

#### 1.2 Installation of canopy

Attach frame of canopy to dowel. Pull the power supply cable through the bore Ø 1.2" (30mm) and connect with push terminal.

#### 1.3 Mounting pendant light

Make sure all cables are de-energized, so there is no voltage. Electricity can cause injuries.

The housing will be attached with 4 steel cables at the canopy.

Insert the ends of the steel cable to the premounted steel cable brackets on the canopy. With soft pressure on the spring-loaded ozzle of the steel cable bracket it is adjustable upward or downward to the desired position. As soon as there is load on the steel cable bracket, it will secure itself and it won't slide in any directions.

Afterwards cut overhanging cable.

Please note: Shortend ropes can only be replaced from the factory with longer ropes.

#### 1.4 Connection template with canopy

Connect cables with enclosed screwdriver and premounted push terminals. The polarity of the light and the canopy has to be identical.

#### Attention: Do not Bend!

Attach canopy cover and with enclosed screws.

Check functionality of light fixture.



Canopy Ø 210 mm / 8.2", 4 steel cable suspensions

