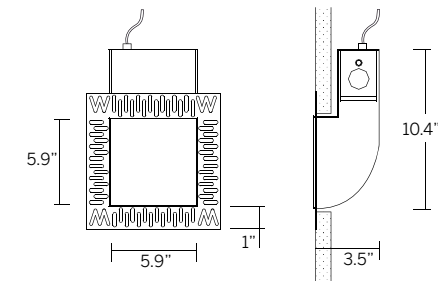


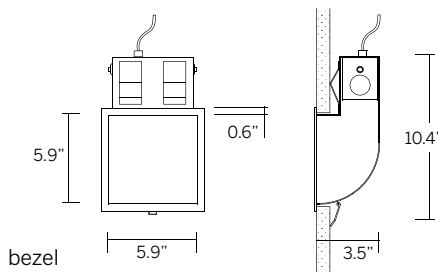
150 Square Ceiling / Floor Wash Specifications



6 inch ceiling or floor wash luminaire with bezel trim or trimless 'plaster-in' for absolute minimal visual impact. Open aperture, asymmetric reflector with regressed frosted glass lens.



plaster-in



bezel

cut-out dimensions 6 5/8" x 6 5/8"

Ordering Information¹

Model	LED	Rated Lumens	Voltage	Power Supply	Options
WG-P150SCFW plaster-in	80 CRI CL-827	12.9W 1439	UNV	S standard non-dim D010 1% 1-10V D3W 1% 3-wire DES 1% EcoSystem	
WG-B150SCFW bezel	CL-830 CL-835 CL-840	1525 1576 1588			
			120	DFPN 1% forward phase	

¹See power supply descriptions below.

Luminaire

- Bezel trim or trimless 'plaster-in' 6" square ceiling or floor washer for drywall.
- Installation from room side of the wall for remodel or new construction.
- 'Easy click' tool free installation of diecast aluminum lamp insert module.
- Die-cast aluminum trim housing with heavy gauge galvanized steel yoke with removable jbox from below ceiling.
- Regressed frosted glass lens standard.
- Powdercoat painted white - RAL 9010.
- Suitable for damp locations.

LED Citizen, 80 CRI

- CL-827 = 2700K
- CL-830 = 3000K
- CL-835 = 3500K
- CL-840 = 4000K

Rated Lumens

- 1439 = 1439lm @ 350mA, 12.9W, 2700K
- 1525 = 1525lm @ 350mA, 12.9W, 3000K
- 1576 = 1576lm @ 350mA, 12.9W, 3500K
- 1588 = 1588lm @ 350mA, 12.9W, 4000K

Voltage

- UNV = 120-277V
- 120 = 120V

Power Supply (remote only)¹

- S = Standard non-dim driver, 120-277V
- D010 = EldoLED, 1%, 0-10V dimming, 120-277V
- D3W = Lutron, 1%, 3-wire fluorescent dimming, 120-277V
- DES = Lutron, 1%, EcoSystem E1/E2 digital dimming, 120-277V
- DFPN = Lutron 1% forward phase with neutral, 120V only

Diffuser

- FR = frosted glass

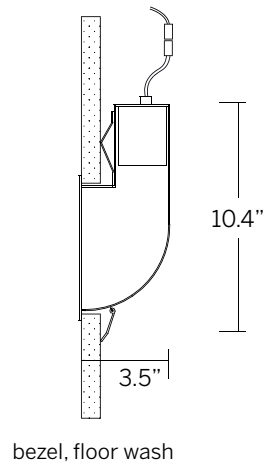
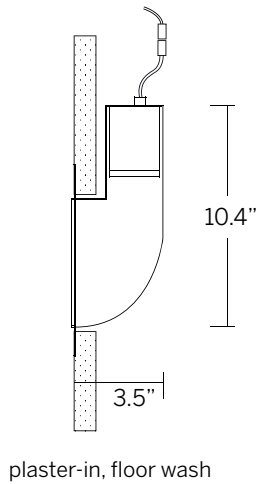
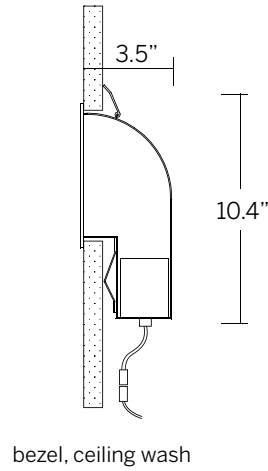
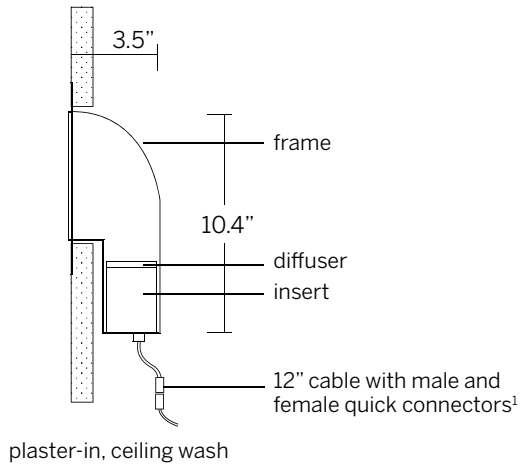
Options

- Consult factory

¹See power supply page for details.

150 Square Ceiling / Floor Wash

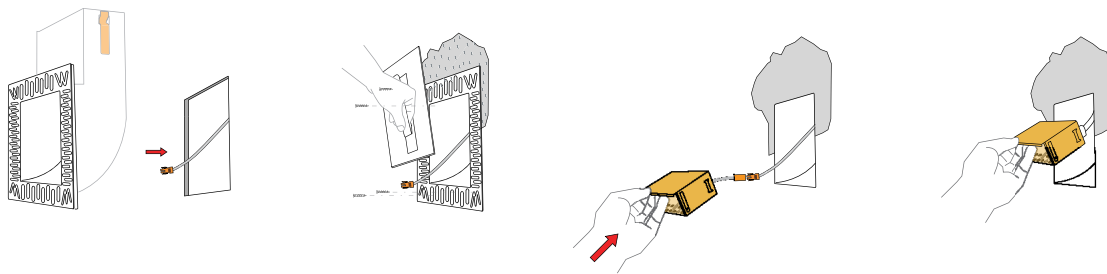
Dimensions



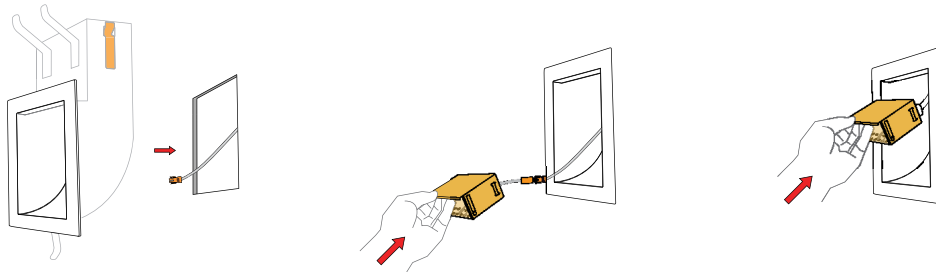
cut-out dimensions 6 5/8" x 6 5/8"

¹Connectors included. Class II low voltage wire supplied by others. See power supply page for details.

Plaster-in instructions

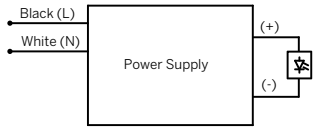


Bezel instructions



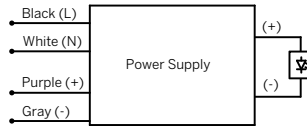
150 Square Ceiling / Floor Wash Power Supplies

S (Standard non-dim)



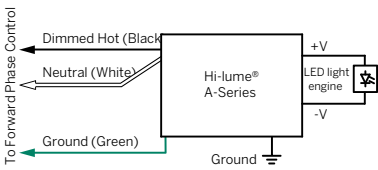
Operates one fixture only

D010 (EldoLED 0-10V)



Operates one fixture only

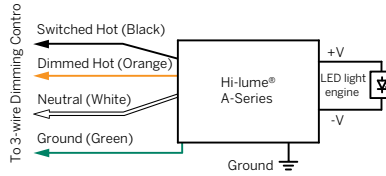
DFPN (1% Lutron forward phase with neutral)



Note: Colors shown correspond to terminal blocks on driver.

Operates one fixture only

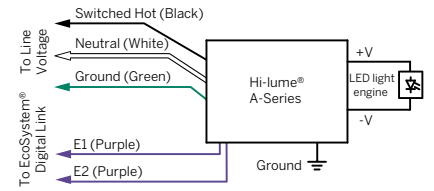
DW3 (Lutron 1%, 3-wire)



Note: Colors shown correspond to terminal blocks on driver.

Operates one fixture only

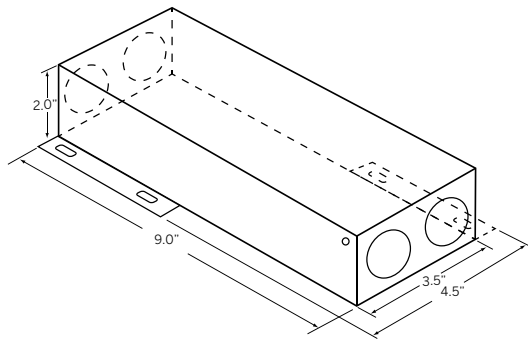
DES (Lutron 1% EcoSystem® digital)



Note: Colors shown correspond to terminal blocks on driver.

Operates one fixture only

Standard enclosure supplied with drivers shown above.



Wire Gauge	Maximum Lead Length*
	350mA – 700mA
18	30 ft (9 m)
16	35 ft (10.5 m)
14	50 ft (15 m)
12	100 ft (30 m)

*Must comply with NEC code