

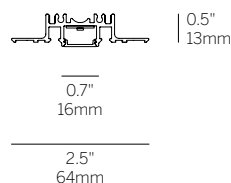
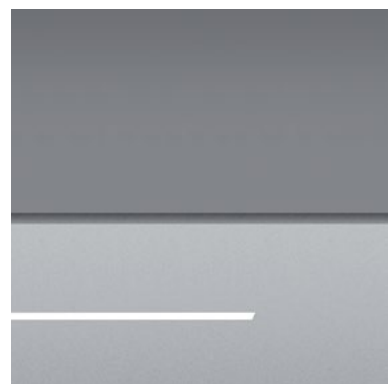
20 Linear Plaster Trim

Pattern 2 Sided Submittal

interlux

Project Name _____ SO # _____

Fixture Type _____ PO# _____



Ordering Information

WG-20LDL	RPT								
Model	Fixation	Pattern	Length	Power ²	CRI/CCT ³	Driver ³	Lens	Finish	Cable
WG-20LDL	RPT	P ¹ PPO PPI	A A x B A x B x C A x B x A x B	L M	927 930 935 940	X S D010 L3DAE L3DOE DFPN	OD (std) SD	W (std) B G F	C4 (std) C10 C20 C30

Luminaire

- Continuous, evenly illuminated snap-in lens without visible LED pattern.
- Thinner than 5/8" drywall depth.
- Standard Opal Diffuser for even illumination and no LED appearance. Satin Diffuser for high efficiency and minimal LED appearance.
- Field replaceable LED boards.
- 90+ CRI, 3 steps MacAdam.
- Lengths and angles factory cut to exact field dimensions.
- Standard and custom corners.
- Powder coat painted white - RAL 9010.
- Supplied with 4' class 2 plenum rated feed cable per fixture lengths.

Fixation

- RPT = Recessed Plaster Trim

Pattern

- S = Straight run
- P = Standard patterns 2, 3 or 4 sided with 90° corners on the same plane¹
- PZ = Non-standard patterns and/or corners other than 90° on multiple planes, consult factory¹

Length

- A, B, C = specify inches to the nearest 0.25" (i.e. 72.25") For patterns specify each length (i.e. 2 sided: A x B = 72.25" x 48"; 3 sided: A x B x C; 4 sided: A x B x A x B)

Power²

- L = 3.2W/ft low power (24V)
- M = 6.4W/ft mid power (24V)

CRI/CCT³

90+ CRI (Low/Mid Power)

- 927 = 2700K (188/348 lm/ft)
- 930 = 3000K (194/359 lm/ft)
- 935 = 3500K (198/366 lm/ft)
- 940 = 4000K (200/370 lm/ft)

Driver (remote)³

- X = No driver, ordered separately
- S = Standard driver 120-277V
- D010 = Osram, 10%, 0-10V dimming, 120-277V
- L3DAE = Lutron Hi-lume 1% EcoSystem, 120-277V
- L3DOE = Lutron Hi-lume Premier 0.1% EcoSystem, 120-277V
- DFPN = Lutron Forward Phase 1%, 120VAC

Lens

- OD = Satin opal diffuser (standard)
- SD = Satin clear diffuser (high efficiency)

Finish

- W = White, 20% gloss, RAL9010 (standard)
- B = Black, 20% gloss
- G = Gray, 20% gloss
- F = Custom finished trim, specify RAL

Cable

- C4 = 4' tray cable (plenum rated) (standard)
- C10 = 10' tray cable (plenum rated)
- C20 = 20' tray cable (plenum rated)
- C30 = 30' tray cable (plenum rated)

Emergency

- Emergency LED driver available, order separately.

¹ See pattern spec sheet.

² Wattage shown does not include power supplies/drivers.

³ Delivered lumens with satin opal diffuser shown.

⁴ Remote power supply required. See power supply page for details.

Customer Approval

☐ Approved

☐ Approved with corrections noted

☐ Revise and Resubmit

Company _____

Signature _____

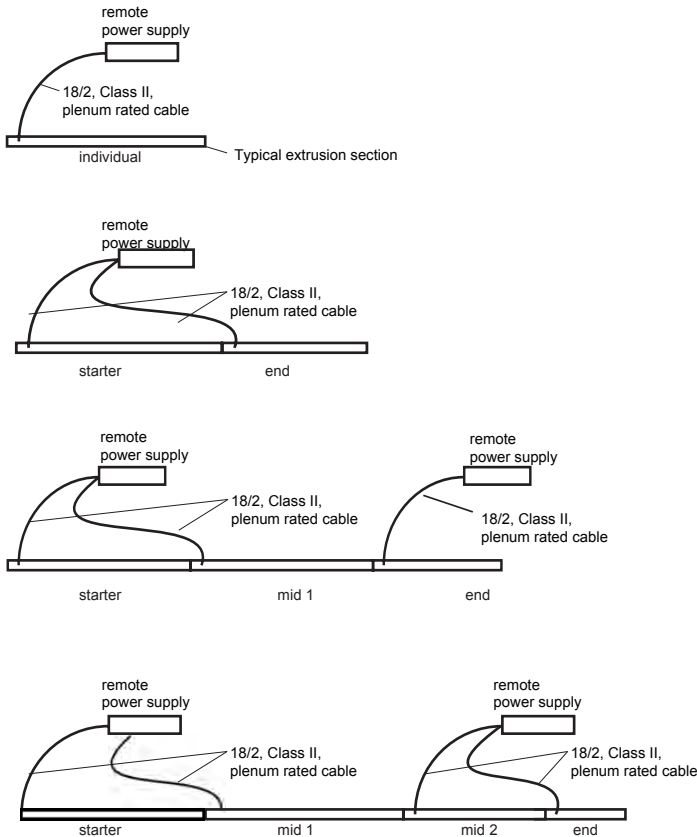
Print Name _____

Date _____

Original Date Submitted _____

Project Name _____ SO # _____ PO# _____ Fixture Type _____

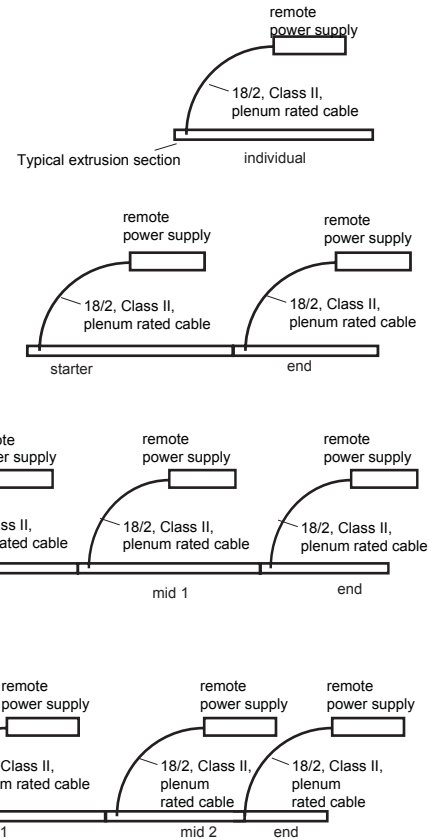
Typical 96W Driver System Layout



Non-Dimming (S), 0-10v (D010), and 0.1% Lutron Ecosystem (L3D0E) Dimming Systems:

1. 96.25" maximum fixture length.
2. 96W, 24V, constant voltage power supply (12 linear feet of fixture / driver max at 6.4w/ft, 24 linear feet of fixture / driver max at 3.2w/ft)

Typical 40W Driver System Layout



1% Lutron Ecosystem (L3DAE) and 1% Phase Forward (DFPN) Dimming Systems:

1. 72" maximum fixture length at 6 W/ft, 96" maximum fixture length at 3 W/ft.
2. 40W, 24V, constant voltage power supply (6 linear feet of fixture / driver max at 6.4w/ft, 12 linear feet of fixture / driver max at 3.2w/ft)

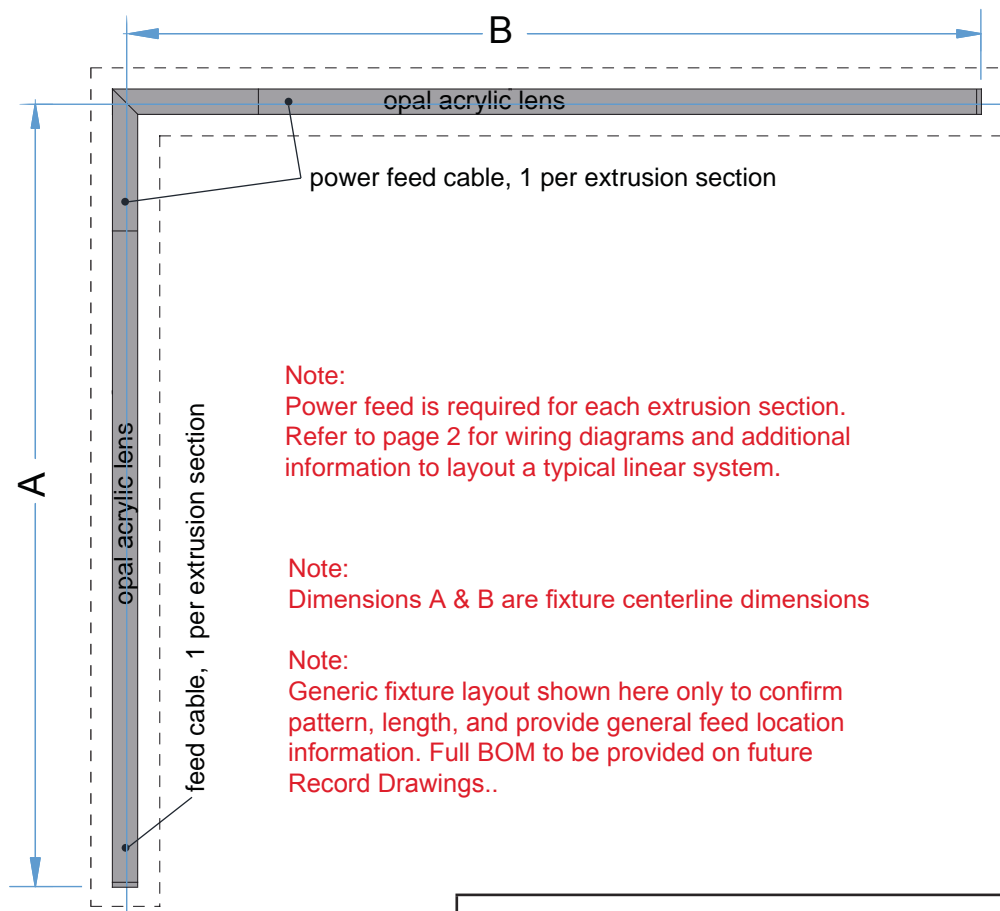
General Notes for all system types:

1. End caps supplied in kits to be field installed at the end of each fixture.
2. Starters and Mid 1 extrusion sections are supplied with maximum lengths for long linear systems.
3. End extrusion sections have custom tailored length between 23.8" - 96.25" to obtain the overall system length.
4. When an End is calculated to be less than 23.8", a Mid 2 extrusion added to the system to split the length into manageable sizes.
5. Class II, plenum rated cable supplied hardwired to extrusion section, 4 ft length standard. Longer lengths available (specify when ordering)

20 Linear Plaster-in Submittal - Pattern 2 Sided

Project Name _____ SO # _____ PO# _____ Fixture Type _____

System	Qty.	'A'	'B'	Approximate Driver QTY
1	_____	_____	_____	_____
2	_____	_____	_____	_____
3	_____	_____	_____	_____
4	_____	_____	_____	_____
5	_____	_____	_____	_____



Note:
Power feed is required for each extrusion section.
Refer to page 2 for wiring diagrams and additional
information to layout a typical linear system.

Note:
Dimensions A & B are fixture centerline dimensions

Note:
Generic fixture layout shown here only to confirm
pattern, length, and provide general feed location
information. Full BOM to be provided on future
Record Drawings..

Customer Approval

Company _____

☐ Approved

Signature _____

☐ Approved with
corrections noted

Print Name _____

☐ Revise and Resubmit

Date _____