

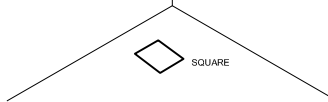
INSTALLATION INSTRUCTIONS FOR SQUARE 100 OUTER HOUSING.

All dimensions are given according to the SI system of units (mm, kg, °C), additional dimensions that are written in brackets, are given according to the U.S. measurement system (in, lbs, °F).

GENERAL REMARKS ON SAFETY:

- Read all of these instructions before installing fixtures.
- Keep all of the instructions for future reference.
- Turn off power before installing fixture.
- Installation is to be performed by a qualified electrician only.
- All installations are to conform to the standards of the National Electrical Code as well as all local jurisdictional codes and regulations.
- Any modification of the luminaire will void any and all written or implied warranties.
- Do not open the luminaire -this will void the IP rating.
- The manufacturer accepts no responsibility for damage to persons or property arising through improper use or installation.

POSSIBLE INSTALLATION POSITIONS



1500kg (3300 lbs) -IT HAS BEEN DESIGNED AND TESTED TO STAND
A STATIC LOAD UP TO 1500kg (3300 lbs).

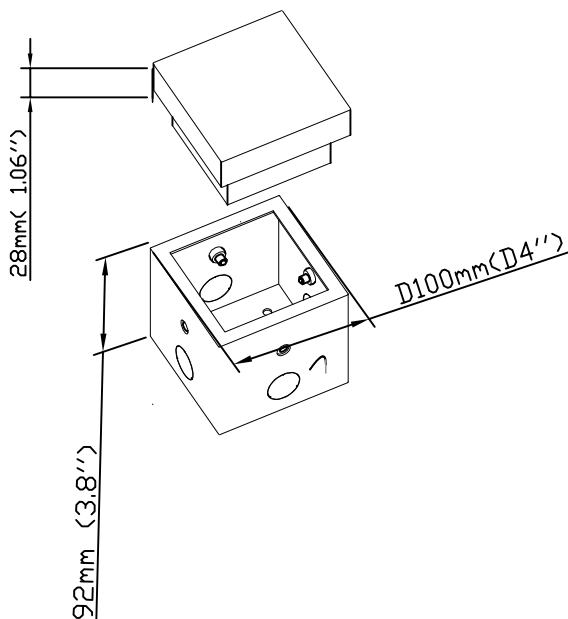


Stainless steel 304

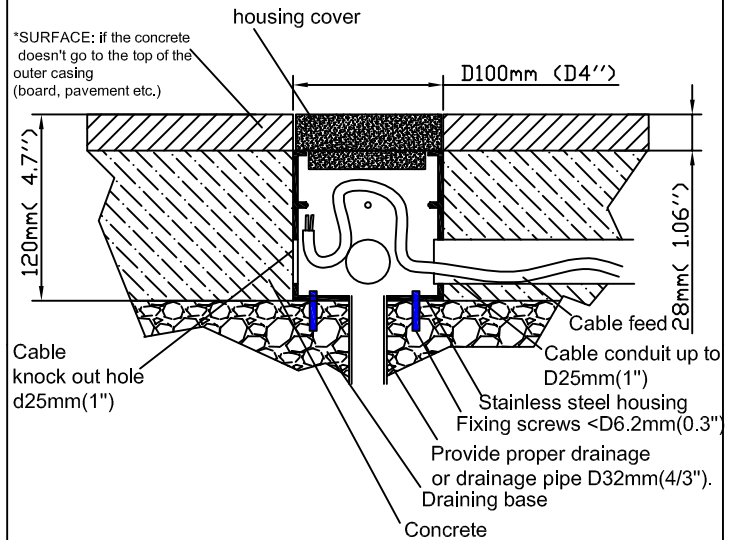
For Wet Locations

THIS PRODUCT MUST BE INSTALLED IN ACCORDANCE WITH THE
APPLICABLE INSTALLATION CODE BY A PERSON FAMILIAR WITH THE
CONSTRUCTION AND OPERATION OF THE PRODUCT AND THE
HAZARDS INVOLVED

GENERAL DIMMENSIONS



**Product must be installed flush or slightly below grade to
protect from damage due to equipment operated over them**

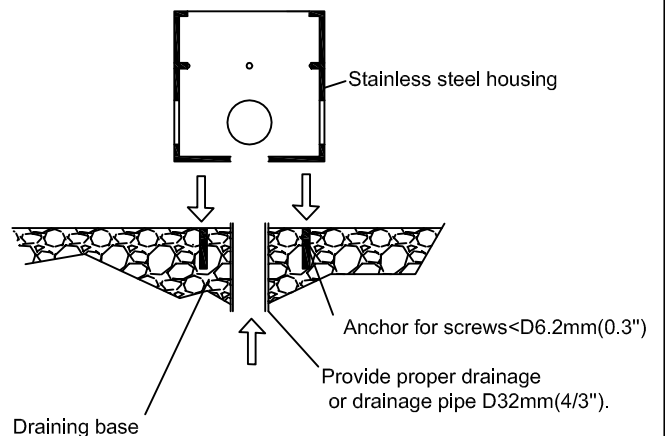


1. Prepare proper drainage or drainage pipe at installing position.
2. Using housing as template drill holes for anchor 6mm(0.3") screws .
3. Set Anchors (Use suitable anchors for the application)
4. Connect drainage pipes to housing. (if drainage pipe used)
5. Position housing in level with grade
6. Attach housing with suitable screws to surface
7. Place cable pipe in housing through knock out hole.
8. Run feed cable in to housing through conduit and Leave 40mm(1.5') of cable outside housing.
9. Position cable inside housing
10. Place housing safety cover
11. Ready for pouring concrete.

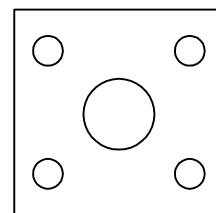
Note!

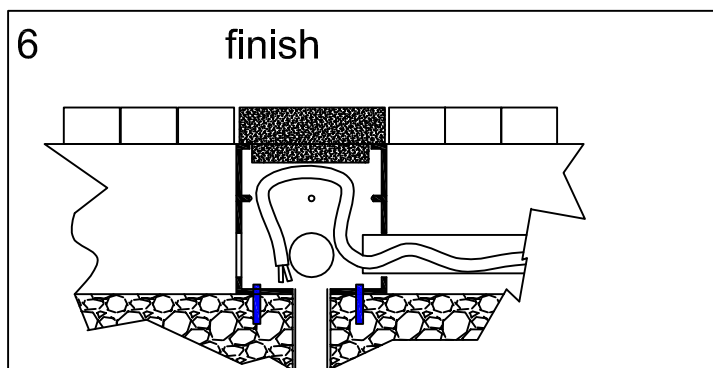
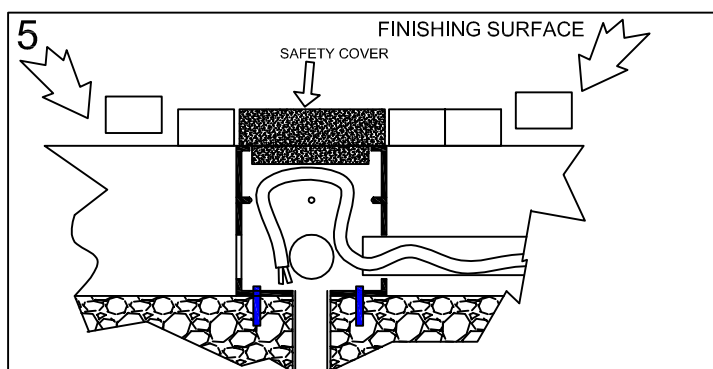
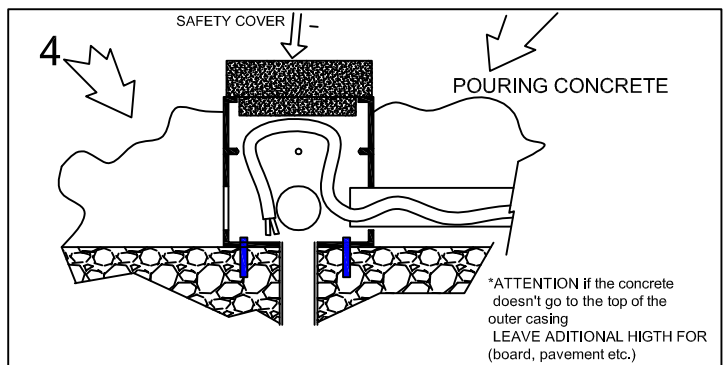
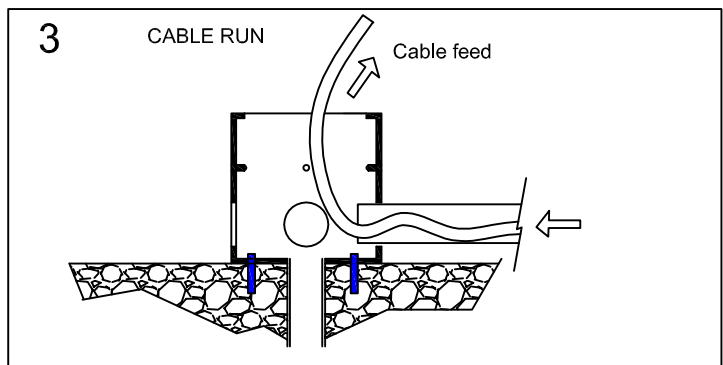
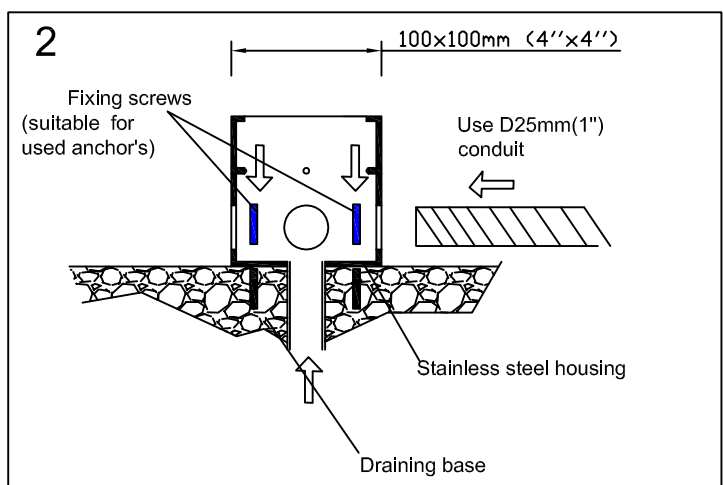
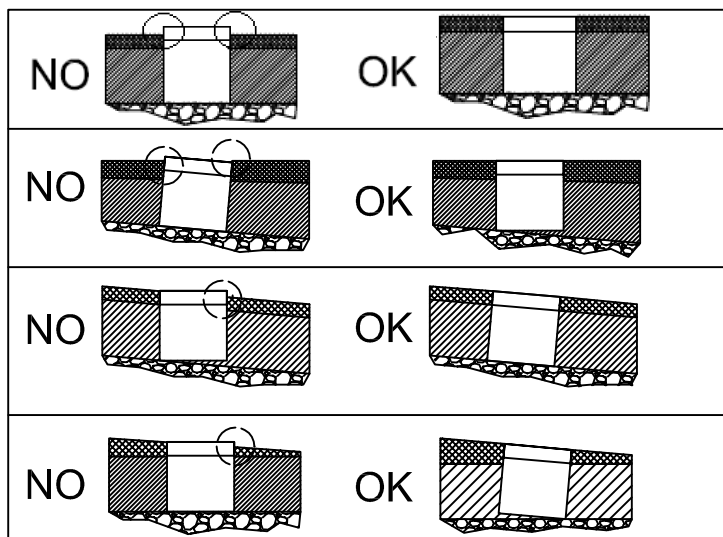
When floor is finished safety cover must be level with it!!
Caution when pouring material around the outer housing (which is set properly).
Don't pour the material directly on the upper side of the outer housing.
Check if all holes are properly sealed.

1



Use housing as pattern to drill holes for fixing screws.





WARRANTY

All products are factory tested and are guaranteed free from factory defect for a period of 3 years under following terms:

- Product has not been subject to physical or atmospheric damage.
 - Product has been returned and factory evaluated for defect or malfunction.
 - The luminaire factory seal (IP rating) has not been compromised
- The manufacturer accepts no responsibility for damage to persons or property arising through improper use or installation.

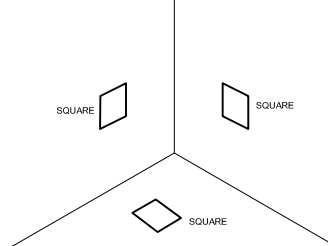
INSTALLATION INSTRUCTIONS FOR SQUARE 100 LUMINAIRE.

All dimensions are given according to the SI system of units (mm, kg, °C), additional dimensions that are written in brackets, are given according to the U.S. measurement system (in, lbs, °F).

GENERAL REMARKS ON SAFETY:

- Read all of these instructions before installing fixtures.
- Keep all of the instructions for future reference.
- Turn off power before installing fixture.
- Installation is to be performed by a qualified electrician only.
- All installations are to conform to the standards of the National Electrical Code as well as all local jurisdictional codes and regulations.
- Any modification of the luminaire will void any and all written or implied warranties.
- Do not open the luminaire -this will void the IP rating.
- The manufacturer accepts no responsibility for damage to persons or property arising through improper use or installation.

POSSIBLE INSTALLATION POSITIONS

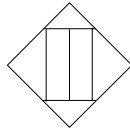


1500kg (3300 lbs) -IT HAS BEEN DESIGNED AND TESTED TO STAND A STATIC LOAD UP TO 1500kg (3300 lbs).

40°C (104°F) -THE SURFACE TEMPERATURE OF THE LUMINAIRE IS ≈ 40°C (104°F) AND IMPOSES NO LIMITS ON INSTALLATION.



24Vdc



For Wet Locations

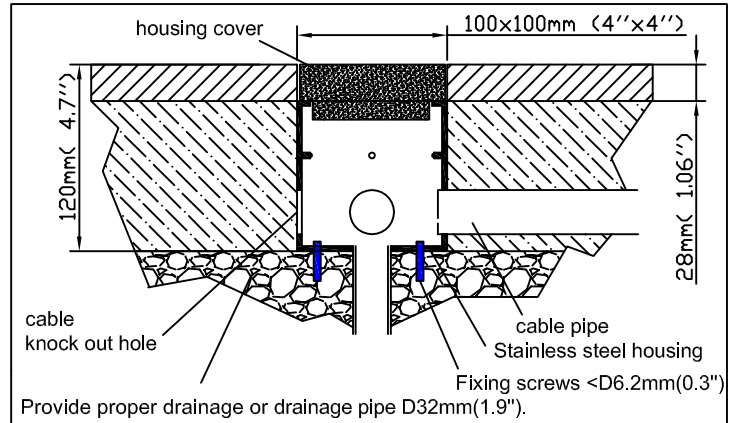
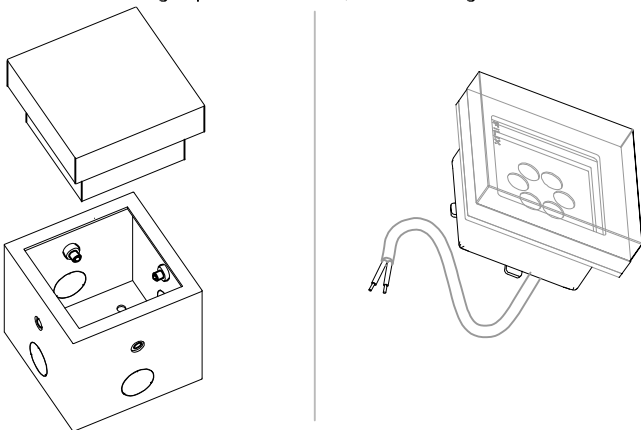
IP 67

CLASS II

CALCULATE THE MAXIMUM POWER CONSUMPTION AND USE APPROPRIATELY SIZED DRIVERS/ CONTROLLERS.

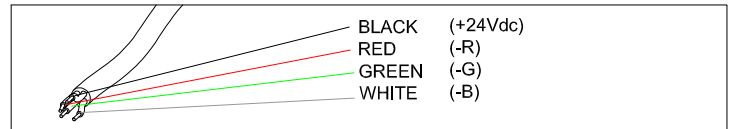
THIS PRODUCT MUST BE INSTALLED IN ACCORDANCE WITH THE APPLICABLE INSTALLATION CODE BY A PERSON FAMILIAR WITH THE CONSTRUCTION AND OPERATION OF THE PRODUCT AND THE HAZARDS INVOLVED

When installing Square luminaire, outer housing must be used.

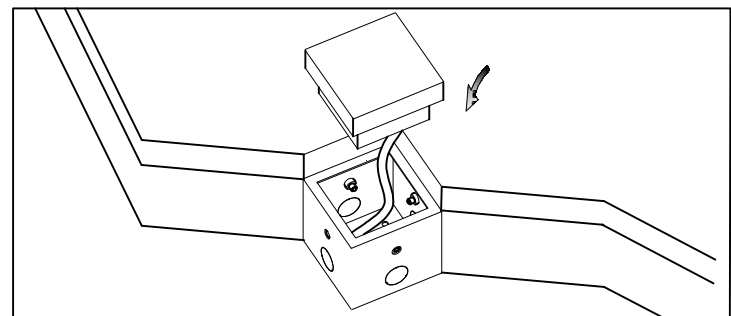
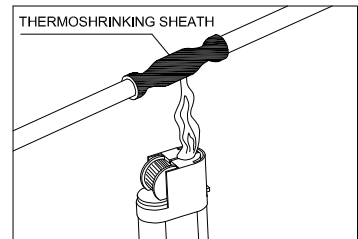
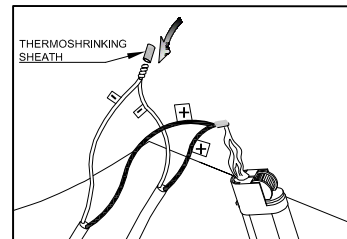
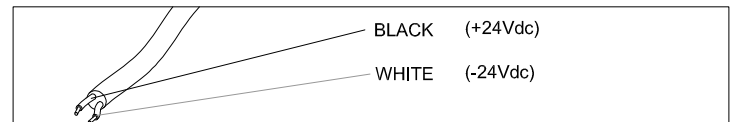


1. Fix housing with screws into position
2. Connect cable and drainage pipes on to housing.
3. Place feed cable in to housing through cable pipe. Leave 40mm (1.5") of cable outside housing.
4. Position cable inside and close housing with safety cover.
5. Ready for pouring concrete.
6. Remove safety cover and connect fixture on to feed cable as shown in following figures.
7. Place fixture in to housing.

FIXTURE CONNECTIONS FOR RGB LED IP68



FIXTURE CONNECTIONS FOR WHITE LED IP68



WARRANTY

All products are factory tested and are guaranteed free from factory defect for a period of 3 years under following terms:

- Product has not been subject to incorrect voltage or polarity connection.
- Product has not been subject to physical or atmospheric damage.
- Product has been returned and factory evaluated for defect or malfunction.
- All drivers and controllers are approved for use by Filix.
- The luminaire factory seal (IP rating) has not been compromised

The manufacturer accepts no responsibility for damage to persons or property arising through improper use or installation.

US & CANADA contact : Inter-lux
9385-K Gerwig Lane
Columbia, MD 21046
P 410-381-1497
Fax 410-381-1589