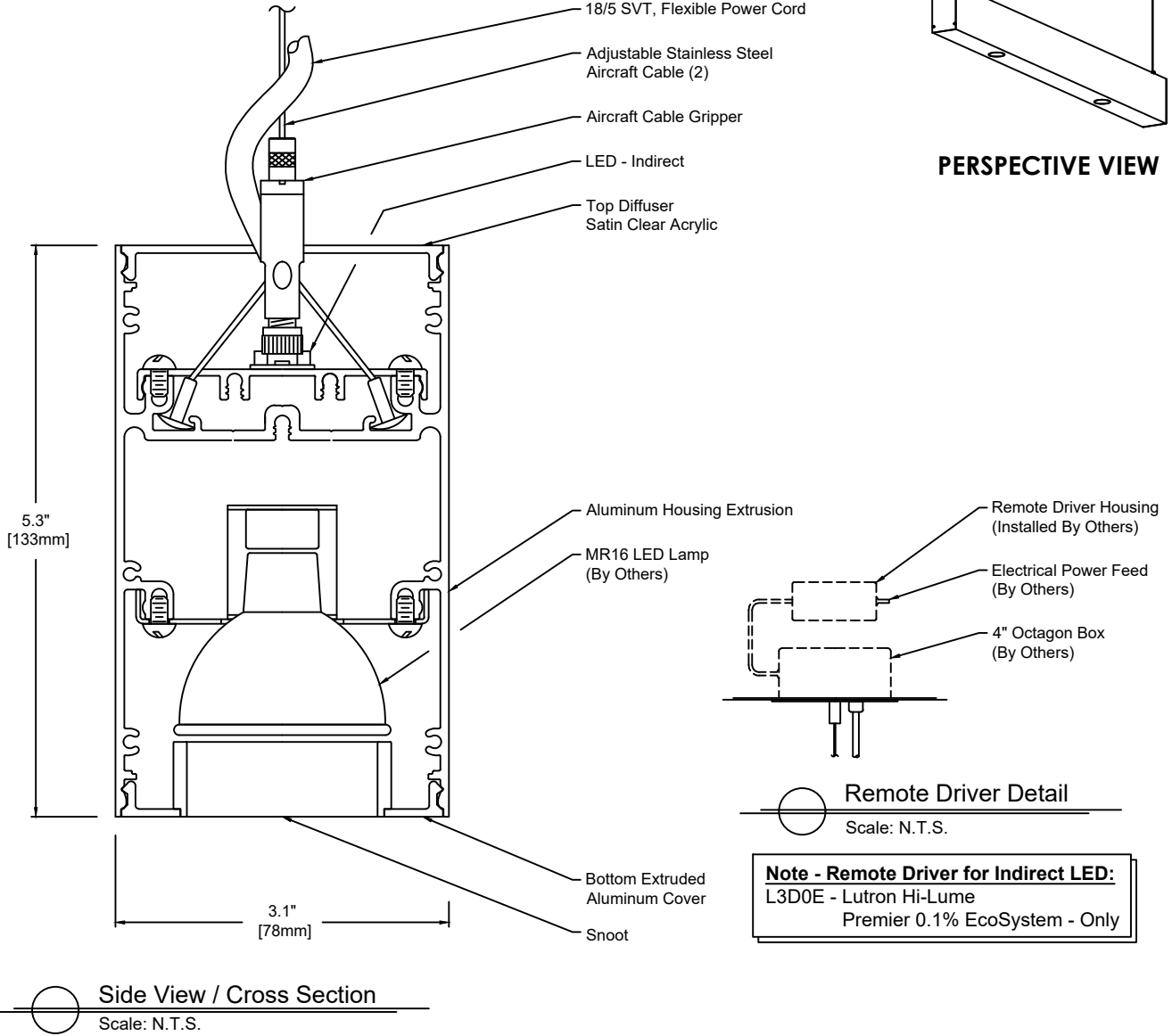


# ClearLine - Pendant

## TECHNICAL SHEET



**Note - Remote Driver for Indirect LED:**  
 L3D0E - Lutron Hi-Lume Premier 0.1% EcoSystem - Only

Drawing 1 of 3

Fixture Weight : 3 lbs/ft

CL2	P	XX	M	MI	830	1	RS12	S	CB - SA	16	AM - DC - CC
Model	Type	Size	Wattage Accent	Wattage Indirect	Color Temp.	Voltage	Control Accent	Control Indirect	Cover / Diffuser	Finish	Options
P - Pendant	24" 36" 48"	M - MR16 LED	00 LI MI HI	00 827 830 835 840	1 - 120 VAC only 3 - 277 VAC only	RS12 RS12277	00 S D010 DFPN L3DAE L3D0E	CB - Extruded Aluminum Cover (Bottom) SA - Satin Clear Acrylic (Top) CT - Extruded Aluminum Cover (Top)	16 - Clear Anodized Aluminum 21 - Painted White - RAL 9010 Matte 22 - Painted Custom Color	AM - Accent Module SA - Single Circuit DC - Dual Circuit CC - Clear Insulated Cable (Standard) WC - White Cable BC - Black Cable	

**Wattage and Control**

Control for Accent Module (Integral 12V):  
 RS12 - Hatch RS12-60M-LED, 120 Volt  
 RS12277 - Hatch RS12-60M-LED-277, 277 Volt  
 Wattage "M" - Max 12 Watt MR16 / GU5.3 LED (By Others)

Control for Indirect LED (Integral 24V):  
 S - Non-Dim  
 D010 - 0-10V 10%  
 DFPN - Lutron Forward Phase 1%, 120VAC  
 L3DAE - Lutron Hi-Lume 1% EcoSystem  
 Control for Indirect LED (Remote 24V):  
 L3D0E - Lutron Hi-Lume Premier 0.1% EcoSystem

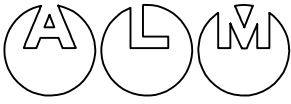
For no indirect light specify "00"  
 Wattage "LI" - 3 Watt/foot  
 2,700K - 400 lm/foot  
 3,000K - 400 lm/foot  
 3,500K - 416 lm/foot  
 4,000K - 242 lm/foot  
 Wattage "MI" - 6 Watt/foot  
 2,700K - 743 lm/foot  
 3,000K - 743 lm/foot  
 3,500K - 774 lm/foot  
 4,000K - 789 lm/foot

Wattage "HI" - 10 Watt/foot  
 2,700K - 1,174 lm/foot  
 3,000K - 1,174 lm/foot  
 3,500K - 1,222 lm/foot  
 4,000K - 1,246 lm/foot

Technical Data:  
 Form - linear, Operating voltage: 24VDC  
 Color rendering index Ra min: 82 CRI  
 Available in 90 CRI  
 Viewing angle: 110°  
 Lifetime - L70: 60,000h  
 Working temperature: -20°C to 60°C

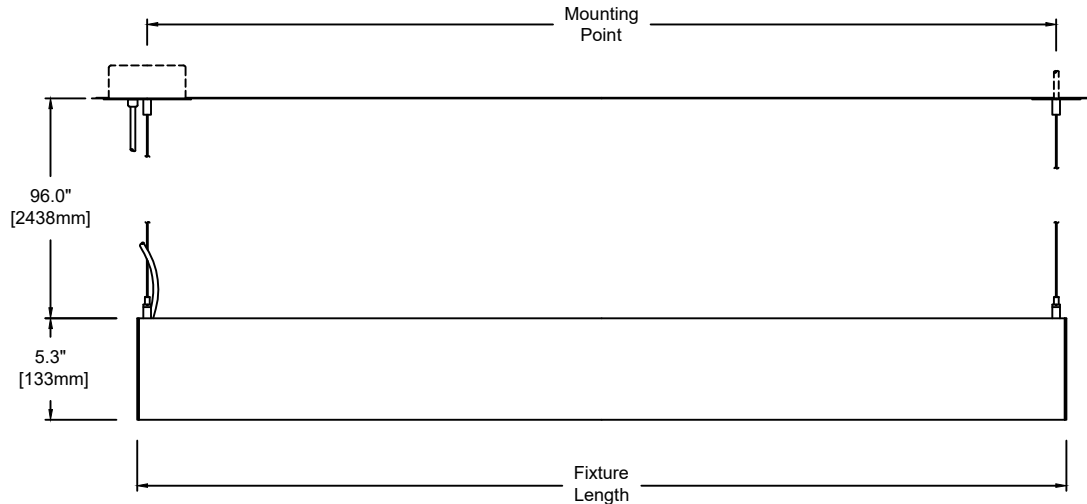
Remote Driver:  
 Max. wiring distance / Load  
 Lutron  
 Wire Gauge ≤96W  
 #18AWG 25'  
 #16AWG 40'  
 #14AWG 60'





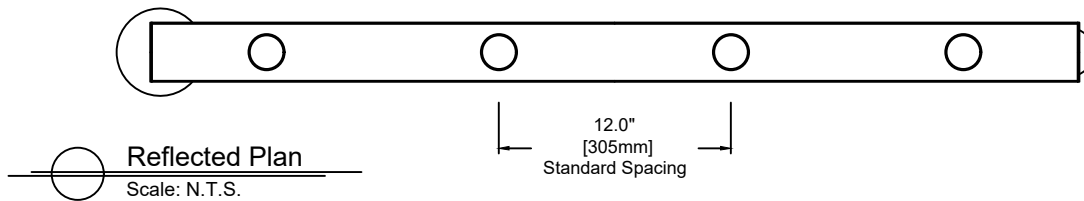
# ClearLine - Pendant

## TECHNICAL SHEET



**Elevation**  
Scale: N.T.S.

**Note:**  
Standard distance between accent lights is 12"  
(contact factory for other accent light spacings)



**Reflected Plan**  
Scale: N.T.S.

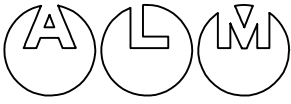
**Drawing 2 of 3**

CL2	P	XX	M	MI	830	1	RS12	S	CB - SA	16	AM - DC - CC
Model	Type	Size	Wattage Accent	Wattage Indirect	Color Temp.	Voltage	Control Accent	Control Indirect	Cover / Diffuser	Finish	Options
P - Pendant	24" 36" 48"	M - MR16 LED	00 LI MI HI	00 827 830 835 840	1 - 120 VAC only 3 - 277 VAC only	RS12 RS12277	00 S D010 DFPN L3DAE L3D0E	CB - Extruded Aluminum Cover (Bottom) SA - Satin Clear Acrylic (Top) CT - Extruded Aluminum Cover (Top)	16 - Clear Anodized Aluminum 21 - Painted White - RAL 9010 Matte 22 - Painted Custom Color	AM - Accent Module SA - Single Circuit DC - Dual Circuit CC - Clear Insulated Cable (Standard) WC - White Cable BC - Black Cable	

**Wattage and Control**

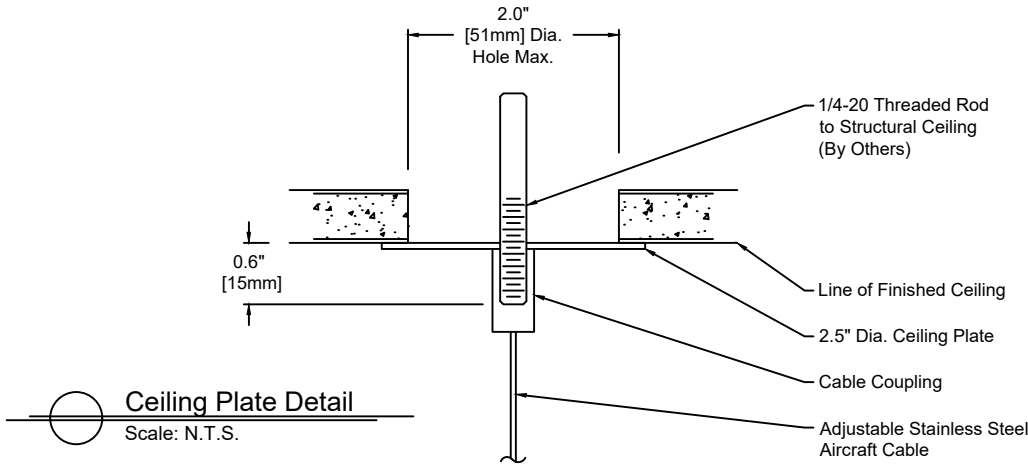
Control for Accent Module (Integral 12V): RS12 - Hatch RS12-60M-LED, 120 Volt RS12277 - Hatch RS12-60M-LED-277, 277 Volt	Control for Indirect LED (Integral 24V): S - Non-Dim D010 - 0-10V 10% DFPN - Lutron Forward Phase 1%, 120VAC L3DAE - Lutron Hi-Lume 1% EcoSystem	For no indirect light specify "00"	Wattage "HI" - 10 Watt/foot 2,700K - 1,174 lm/foot 3,000K - 1,174 lm/foot 3,500K - 1,222 lm/foot 4,000K - 1,246 lm/foot	Remote Driver: Max. wiring distance / Load Lutron Wire Gauge #18AWG 25' #16AWG 40' #14AWG 60'
Wattage "M" - Max 12 Watt MR16 / GU5.3 LED (By Others)	Control for Indirect LED (Remote 24V): L3D0E - Lutron Hi-Lume Premier 0.1% EcoSystem	Wattage "LI" - 3 Watt/foot 2,700K - 400 lm/foot 3,000K - 400 lm/foot 3,500K - 416 lm/foot 4,000K - 242 lm/foot	Technical Data: Form - linear, Operating voltage: 24VDC Color rendering index Ra min: 82 CRI Available in 90 CRI	
	Wattage "MI" - 6 Watt/foot 2,700K - 743 lm/foot 3,000K - 743 lm/foot 3,500K - 774 lm/foot 4,000K - 789 lm/foot	Viewing angle: 110° Lifetime - L70: 60,000h Working temperature: -20°C to 60°C		



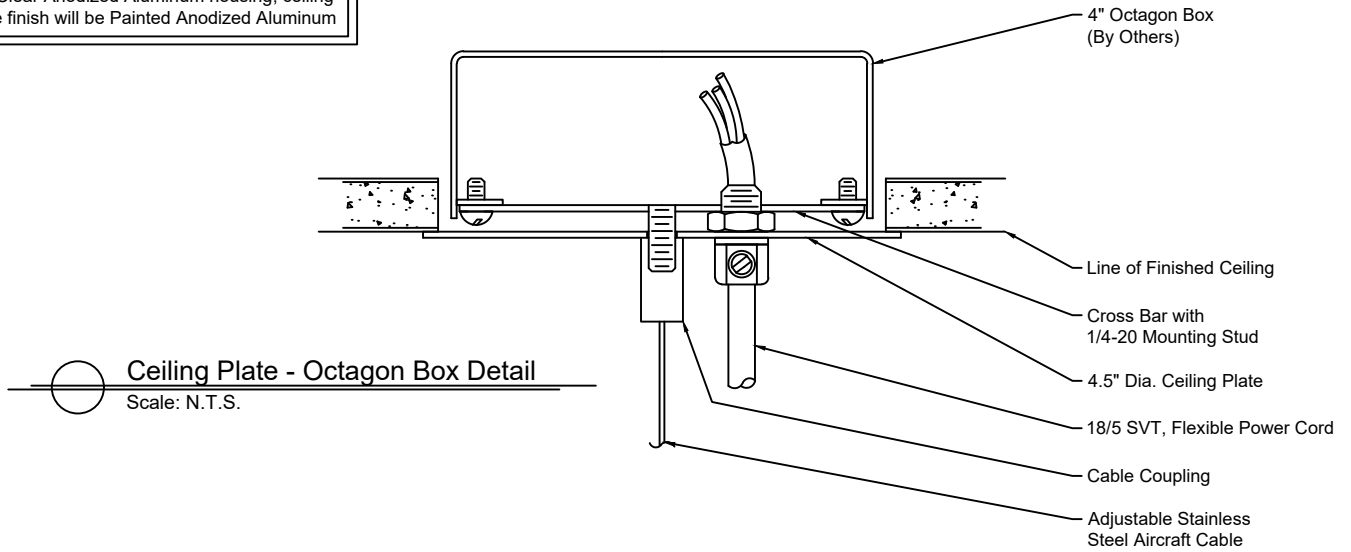


# ClearLine - Pendant

## TECHNICAL SHEET



**Ceiling Plate finish:**  
 - Ceiling Plate finish matches housing  
 - For Clear Anodized Aluminum housing, ceiling plate finish will be Painted Anodized Aluminum



Drawing 3 of 3

CL2	P	XX	M	MI	830	1	RS12	S	CB - SA	16	AM - DC - CC
Model	Type	Size	Wattage Accent	Wattage Indirect	Color Temp.	Voltage	Control Accent	Control Indirect	Cover / Diffuser	Finish	Options
P - Pendant	24" 36" 48"	M - MR16 LED	00 LI MI HI	00 827 830 835 840	1 - 120 VAC only 3 - 277 VAC only	RS12 RS12277	00 S D010 DFPN L3DAE L3D0E	CB - Extruded Aluminum Cover (Bottom) SA - Satin Clear Acrylic (Top) CT - Extruded Aluminum Cover (Top)	16 - Clear Anodized Aluminum 21 - Painted White - RAL 9010 Matte 22 - Painted Custom Color	AM - Accent Module SA - Single Circuit DC - Dual Circuit CC - Clear Insulated Cable (Standard) WC - White Cable BC - Black Cable	

**Wattage and Control**

Control for Accent Module (Integral 12V):  
 RS12 - Hatch RS12-60M-LED, 120 Volt  
 RS12277 - Hatch RS12-60M-LED-277, 277 Volt

Wattage "M" - Max 12 Watt MR16 / GU5.3 LED (By Others)

Control for Indirect LED (Integral 24V):  
 S - Non-Dim  
 D010 - 0-10V 10%  
 DFPN - Lutron Forward Phase 1%, 120VAC  
 L3DAE - Lutron Hi-Lume 1% EcoSystem

Control for Indirect LED (Remote 24V):  
 L3D0E - Lutron Hi-Lume Premier 0.1% EcoSystem

For no indirect light specify "00"

Wattage "LI" - 3 Watt/foot  
 2,700K - 400 lm/foot  
 3,000K - 400 lm/foot  
 3,500K - 416 lm/foot  
 4,000K - 242 lm/foot

Wattage "MI" - 6 Watt/foot  
 2,700K - 743 lm/foot  
 3,000K - 743 lm/foot  
 3,500K - 774 lm/foot  
 4,000K - 789 lm/foot

Wattage "HI" - 10 Watt/foot  
 2,700K - 1,174 lm/foot  
 3,000K - 1,174 lm/foot  
 3,500K - 1,222 lm/foot  
 4,000K - 1,246 lm/foot

Technical Data:  
 Form - linear, Operating voltage: 24VDC  
 Color rendering index Ra min: 82 CRI  
 Available in 90 CRI  
 Viewing angle: 110°  
 Lifetime - L70: 60,000h  
 Working temperature: -20°C to 60°C

Remote Driver:  
 Max. wiring distance / Load

Wire Gauge	Lutron
#18AWG	25'
#16AWG	40'
#14AWG	60'

