

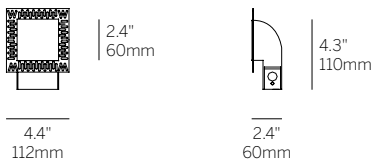
# 2.4" Square Ceiling / Floor Wash Specifications



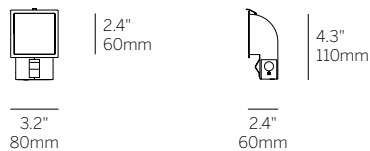
Recessed Plaster Trim



Recessed Bezel Trim



Recessed Plaster Trim (RPT)



Recessed Bezel Trim (RBT)

## Ordering Information

Model	Fixation	Power <sup>1</sup>	CRI/CCT <sup>2</sup>	Driver <sup>3</sup>	Finish
WG-60SCFW	RPT RBT	L	827 830 835 840 927 930 935 940	X S D010 PEQ0 DFPN	W (std)

## Luminaire

- Bezel Trim or Plaster Trim 2.4" ceiling or floor washer for drywall.
- Installation from room side of the wall for remodel or new construction.
- 'Easy click' tool free installation of diecast aluminum lamp insert module.
- Heavy gauge steel trim housing.

## Power

- L = Low Power, 5.9W @ 350mA

## CRI/CCT<sup>1</sup>

LED Cree, 80+ CRI

- CB-827 = 2700K, (740lm)
- CB-830 = 3000K, (836lm)
- CB-835 = 3500K, (836lm)
- CB-840 = 4000K, (856lm)
- For 90+ CRI, specify CB-927, CB-930, etc. Approximately 15% less lumens than 80+ CRI.
- For 95+ CRI, specify CB-F927, CB-F930, etc. Approximately 30% less lumens than 80+ CRI.

## Power Supply (remote only)<sup>1</sup>

- X = No driver
- S = Standard non-dim driver, 120-277V
- D010 = EldoLED, 1%, 0-10V dimming, 120-277V
- PEQ0 = Lutron Hi-lume Premier 0.1% EcoSystem, 120-277V
- DFPN = Lutron Forward Phase 1% 120VAC

## Finish

- W = White, RAL9010 (standard)

## Emergency

- Emergency LED driver available, order separately (remote)

<sup>1</sup> Other lumen packages available, consult factory.

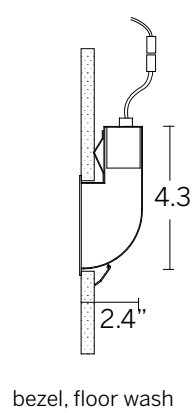
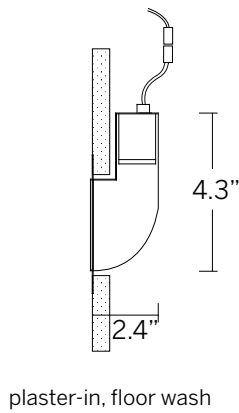
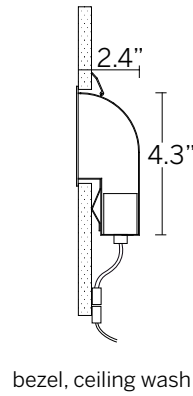
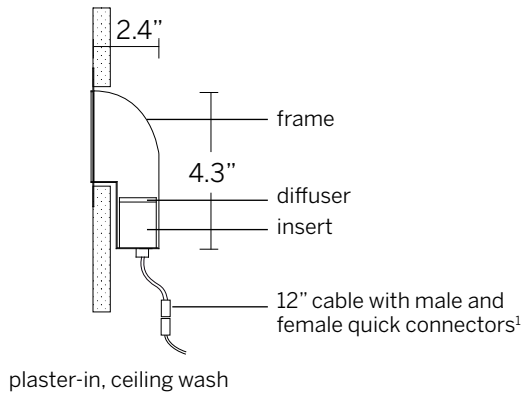
<sup>2</sup> See IES files for delivered lumens.

<sup>3</sup> Wattage shown does not include power supplies/drivers. System wattage adds 10-20%.

<sup>4</sup> See power supply page for details.

# 2.4" Square Ceiling / Floor Wash

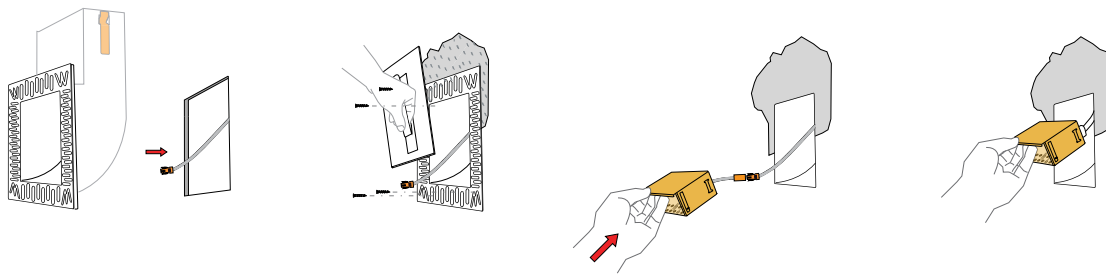
## Dimensions



cut-out dimensions 2 3/4" x 2 3/4"

<sup>1</sup>Connectors included. Class II low voltage wire supplied by others. See power supply page for details.

### Plaster-in instructions



### Bezel instructions

