

Installation Instructions

Luminaires must be installed by a qualified electrician. Check with local and national codes for proper installation.

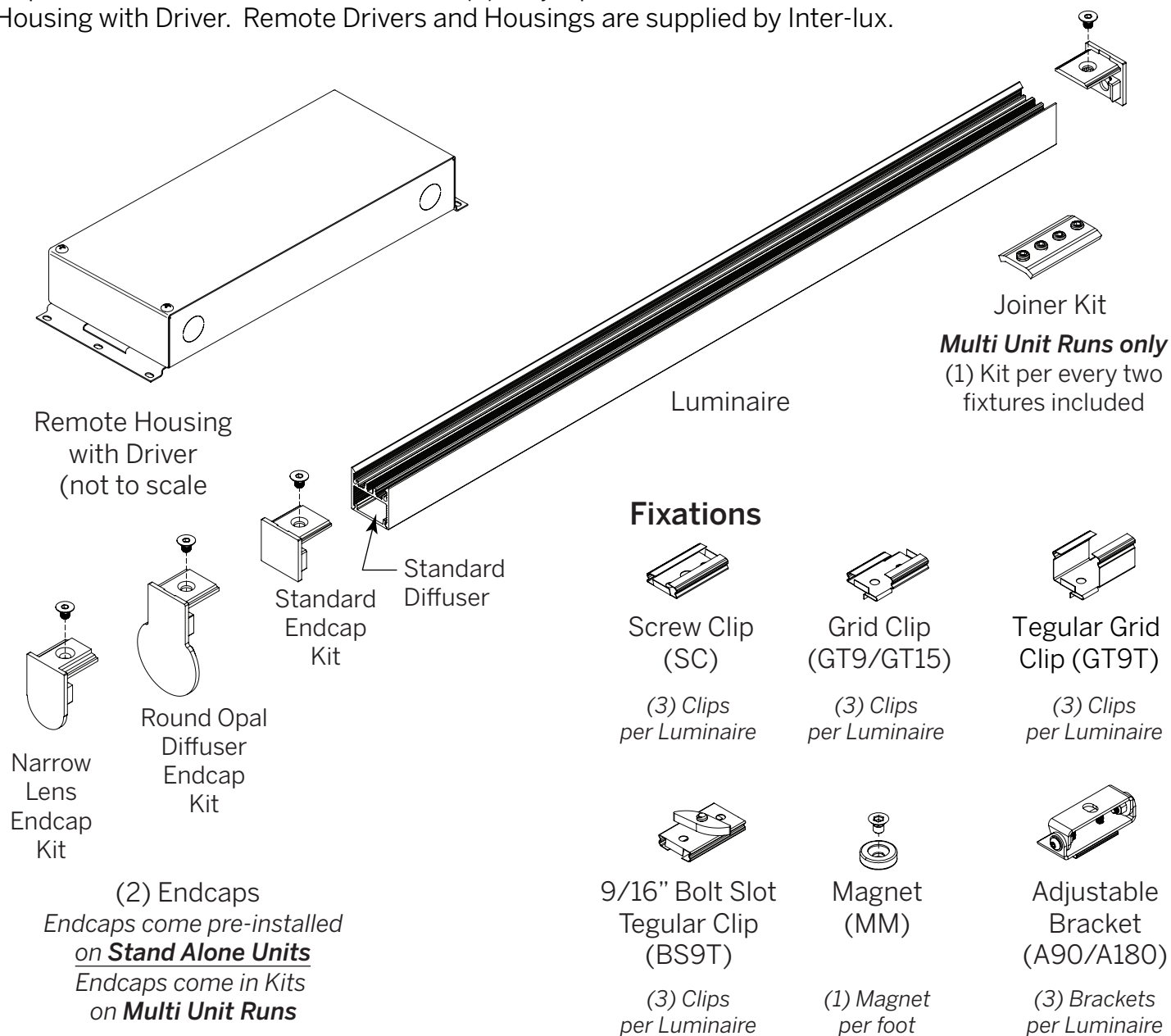


To prevent electrical shock disconnect electrical supply before installation or servicing.
Never connect a live fixture!!!

Contractor is responsible for adequately reinforcing walls and/or ceilings to support fixture weight. Provide blocking when necessary.

Step 1 - Open the Box

Unpack luminaire unit. Unit consists of (2) major parts: Luminaire with Diffuser and Remote Housing with Driver. Remote Drivers and Housings are supplied by Inter-lux.

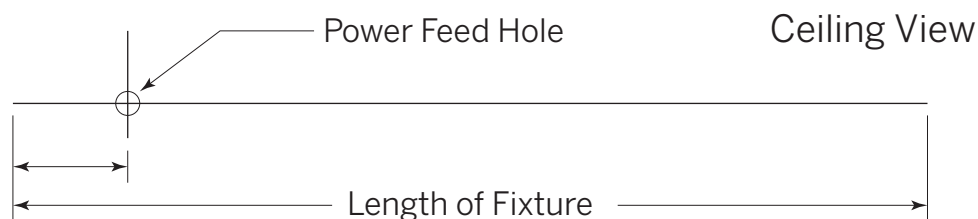


Need Help?

Installation Instructions

Step 2 - Ceiling Prep - All Mounts

- a** Mark position of fixture (stand-alone unit or multiple units) on ceiling.
- b** Mark position of hole for Power Feed

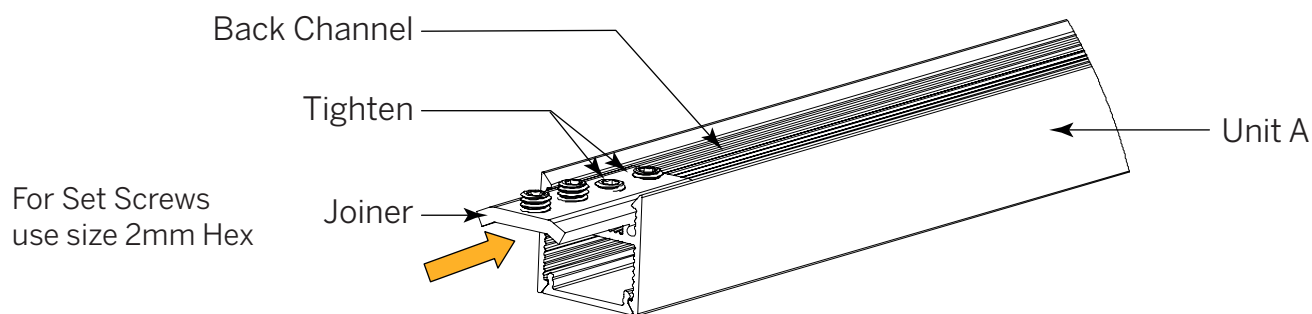


Step 3 - Install Joiners and End Caps

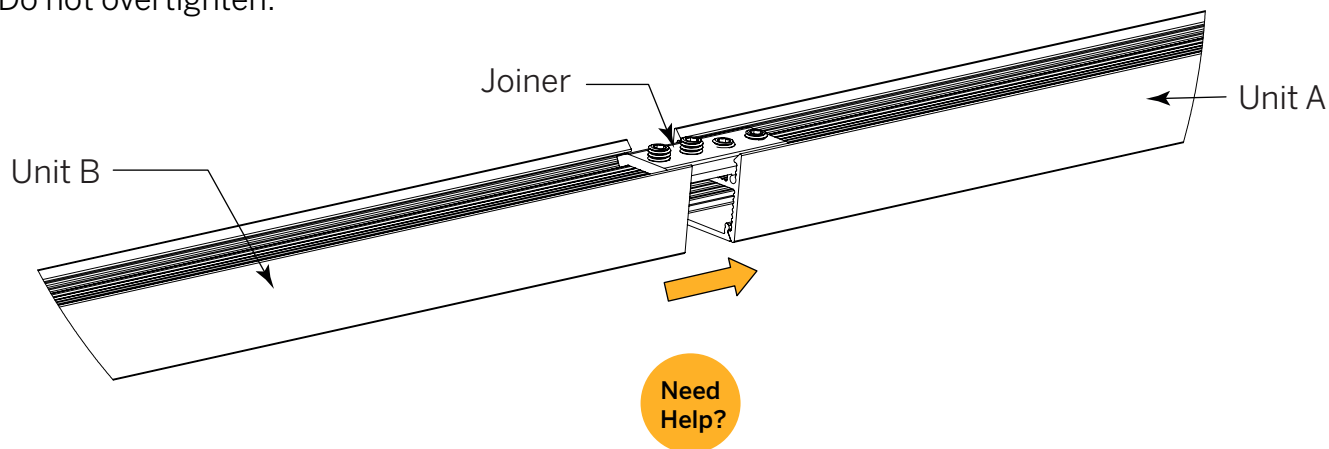
If installing a **Stand-Alone fixture**, skip to Step 4. End Caps come installed at factory.

For an **Multi Unit Run**, use Joiner Kit (Joiner plus four Set Screws) for every two units, and continue below.

- a** Insert Joiner halfway into back channel of Unit A. Tighten two Set Screws to secure. Do not overtighten.



- b** Insert Joiner/Unit A into Unit B. Draw together and tighten two Set Screws to secure. Do not overtighten.

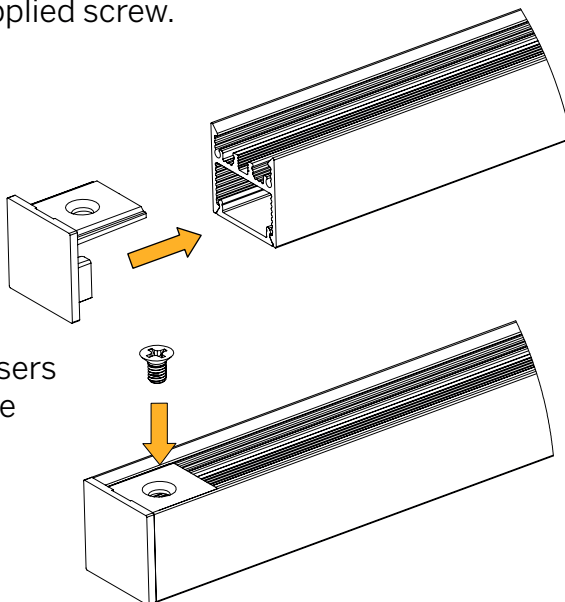


Installation Instructions

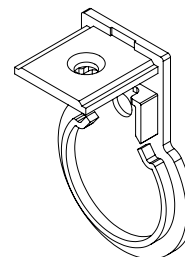
Step 3 - *Continued*

- c** Install Endcap on first and last units of run.
Secure each with supplied screw.

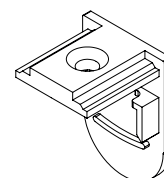
Endcaps illustrated
at far right install the
same way with sup-
plied screw.



See Page 10 for Diffusers
compatible with these
Endcaps



End Cap for Round
Opal Diffuser



End Cap for Narrow
Lens, 16°

Step 4 - **Mounting Options**

Screw Clip

Bolt Slot Tegalur Clip

T-Bar Grid Clip

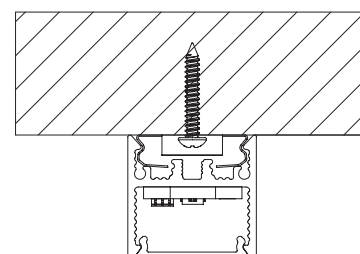
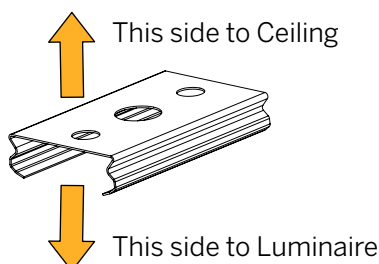
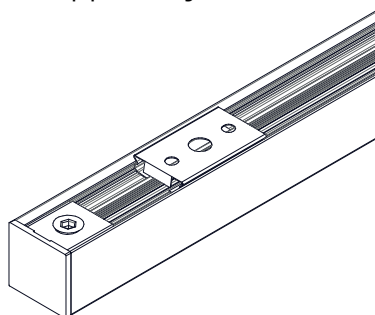
Magnet Mount

Tegalur Grid Clip

Adjustable Bracket

Screw Clip (SC)

If fixture is to be installed on a hard ceiling, unit will come with Screw Clips that are screwed directly to the surface. Clip snaps into channel opposite the diffuser. Screws or anchors supplied by others.

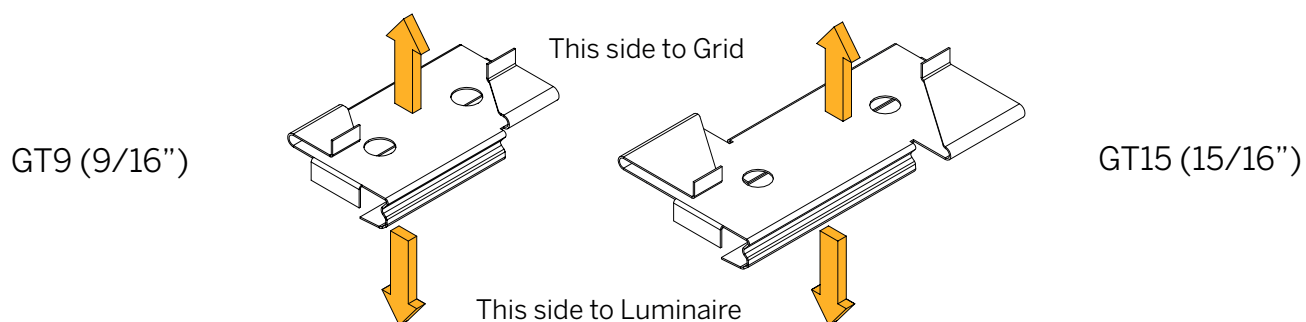


**Need
Help?**

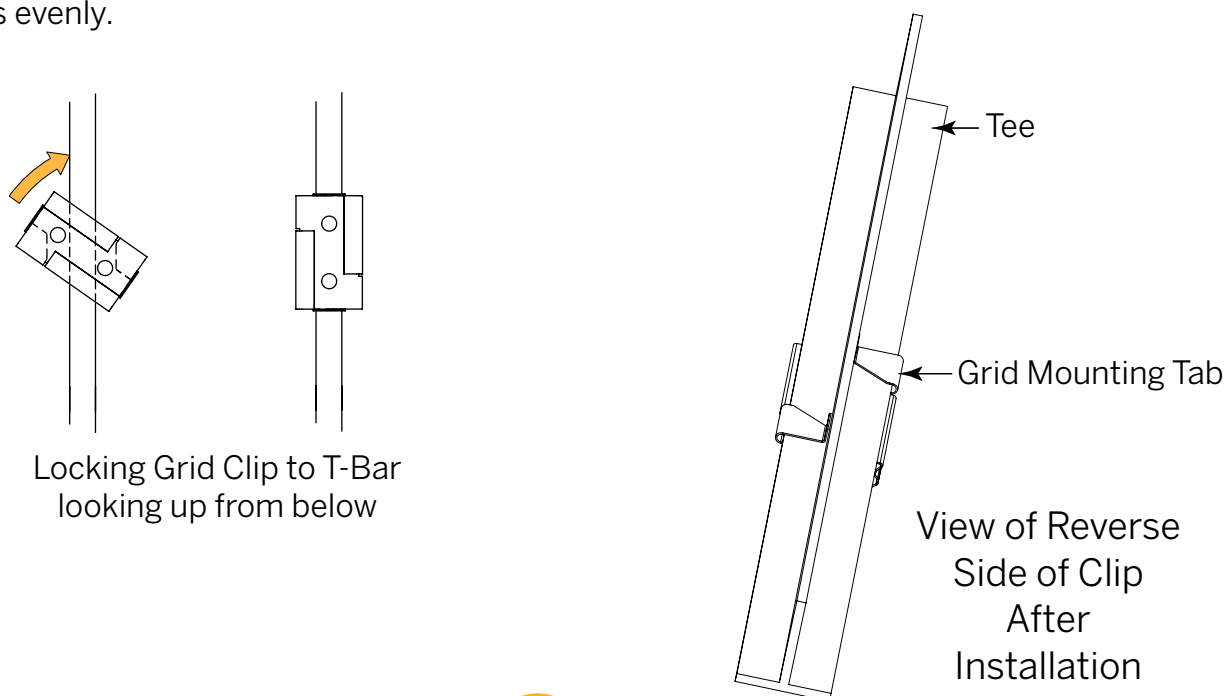
Installation Instructions

Step 4 - *Continued***T-Bar Grid Clip (GT9/GT15)**

- a** Luminaire unit comes with clips for mounting to a suspended ceiling grid. Minimum (2) brackets per fixture, maximum offset 36" on center. Orient Clip as shown on next page.



- b** Place clip on T-Bar at an angle, then rotate clip counter-clockwise. Mounting tabs will slide over flat surfaces of Tee just below ceiling tile. Repeat as necessary. Space clips evenly.

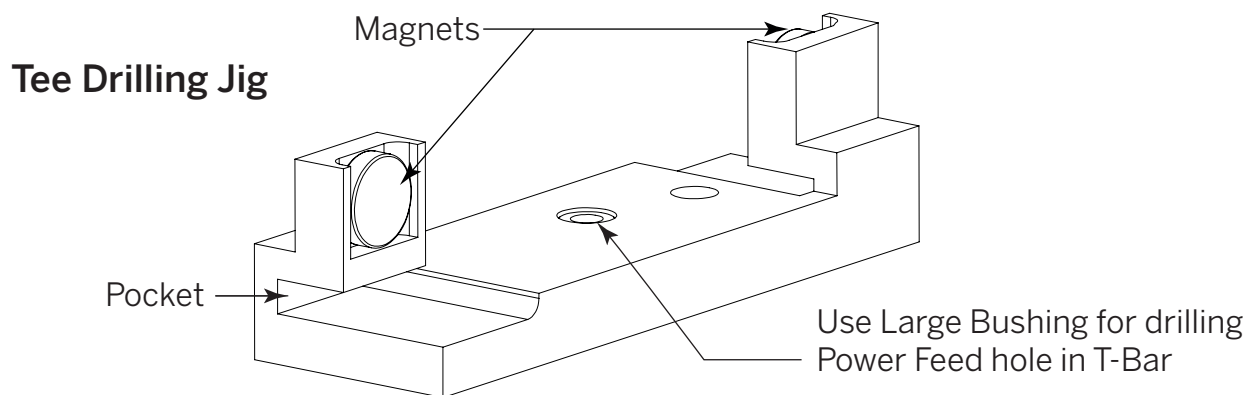


Need
Help?

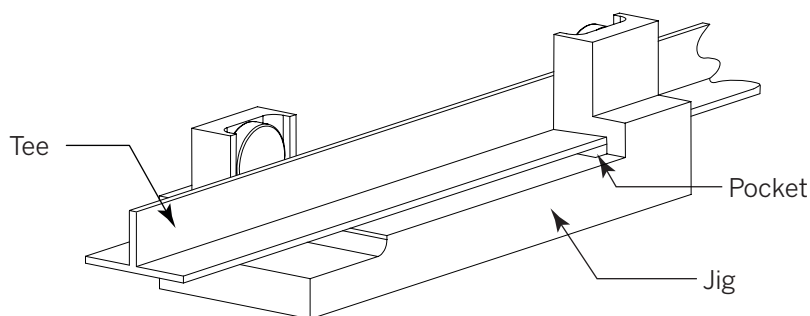
Installation Instructions

Step 4 - *Continued***Marking and Drilling Power Feed Hole (for T-Bar Grid Clip)**

- a** Mark location of exiting power feed on a non-visible area of Tee. Hole should be at least 2.5" from corner.
- b** Locate supplied drilling jig.



- c** The drilling jig's magnets cling to both sides of the vertical element of the Tee. Each side of the horizontal element slips into the pocket (see illustrations above and below) on either end of jig with the same twisting motion of the Grid Clip.

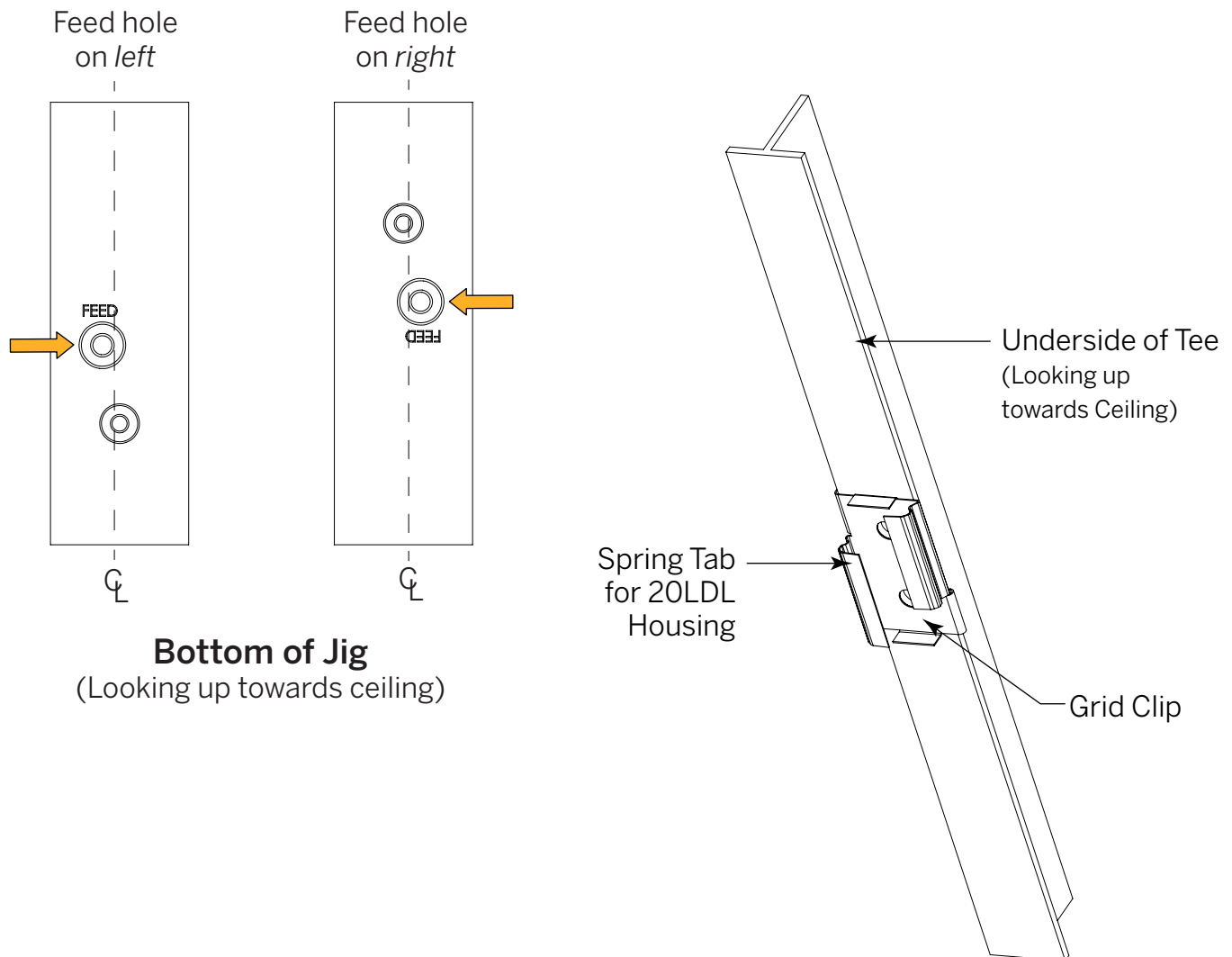


Need
Help?

Installation Instructions

Step 4 - **Continued**

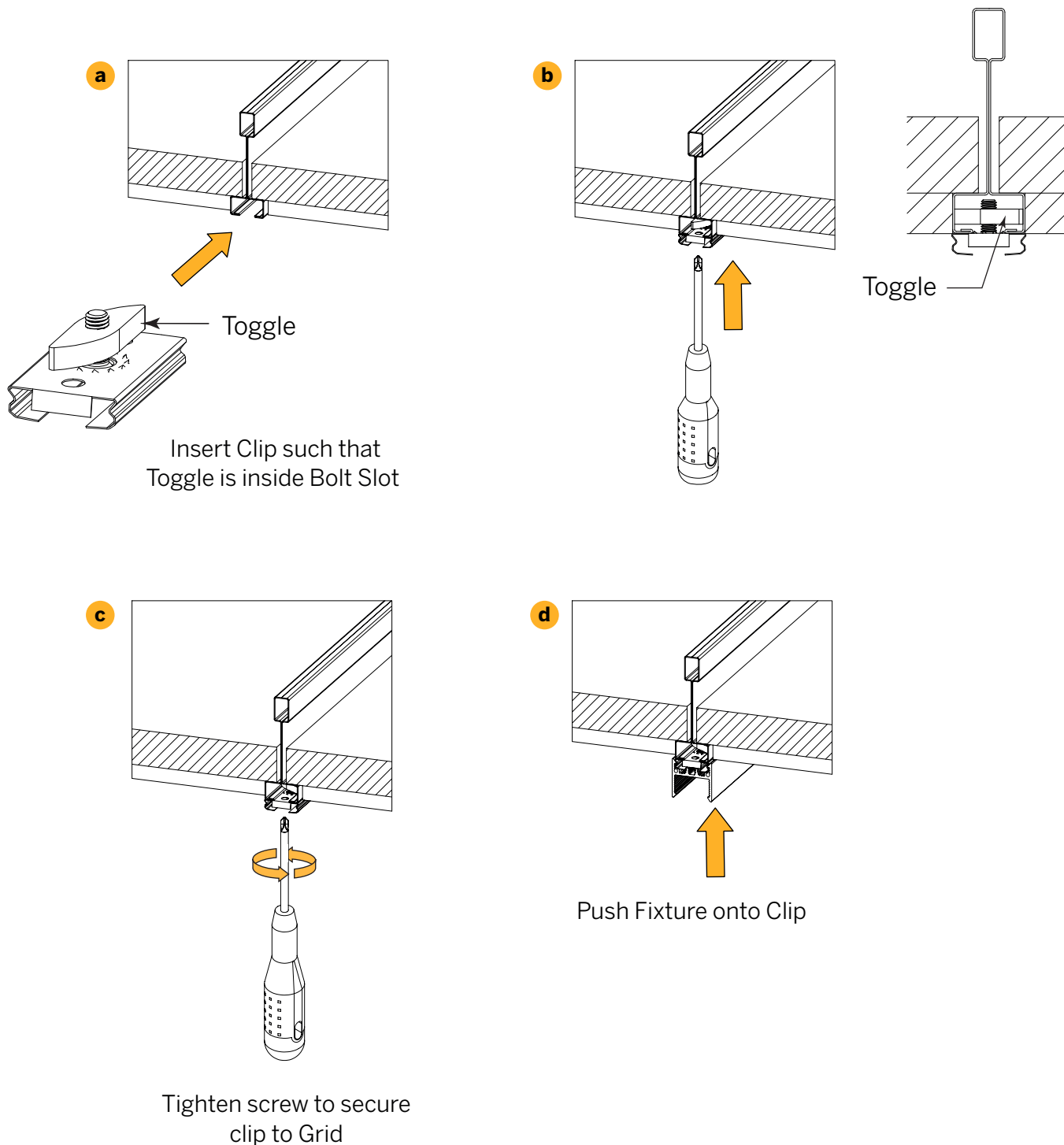
- b** Use large hole (FEED) in drilling jig and line up jig with mark. Note that hole in jig is slightly off center. Drilled hole may be shifted left or right of center depending on orientation of jig. Orient jig as needed.



Need
Help?

Installation Instructions

9/16" Bolt Slot Tegular Clip (BS9T)

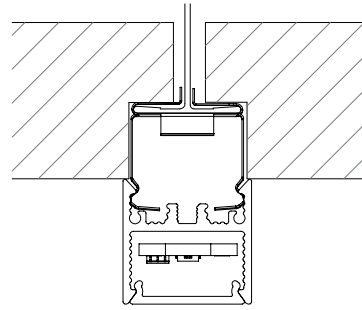
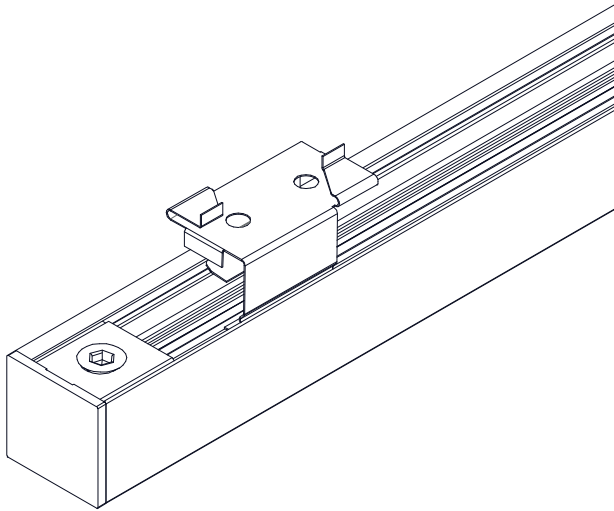


Need Help?

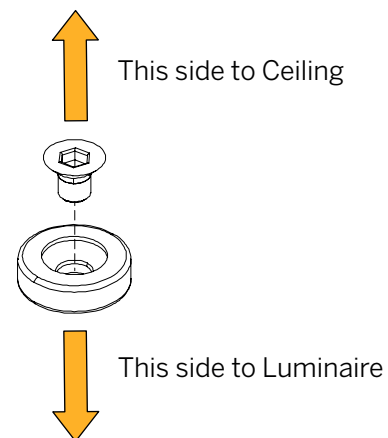
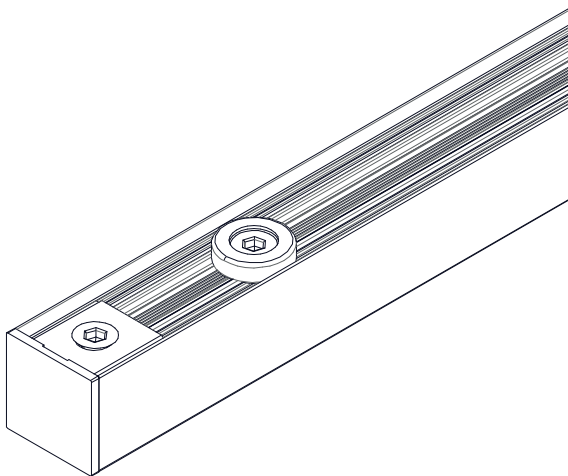
Installation Instructions

Tegular Grid Clip (GT9T)

Installation for the Tegular Grid Clip follows that of regular T-Bar Grid Clips. The difference is only a matter of height, allowing this clip to sit recessed within the ceiling tiles.

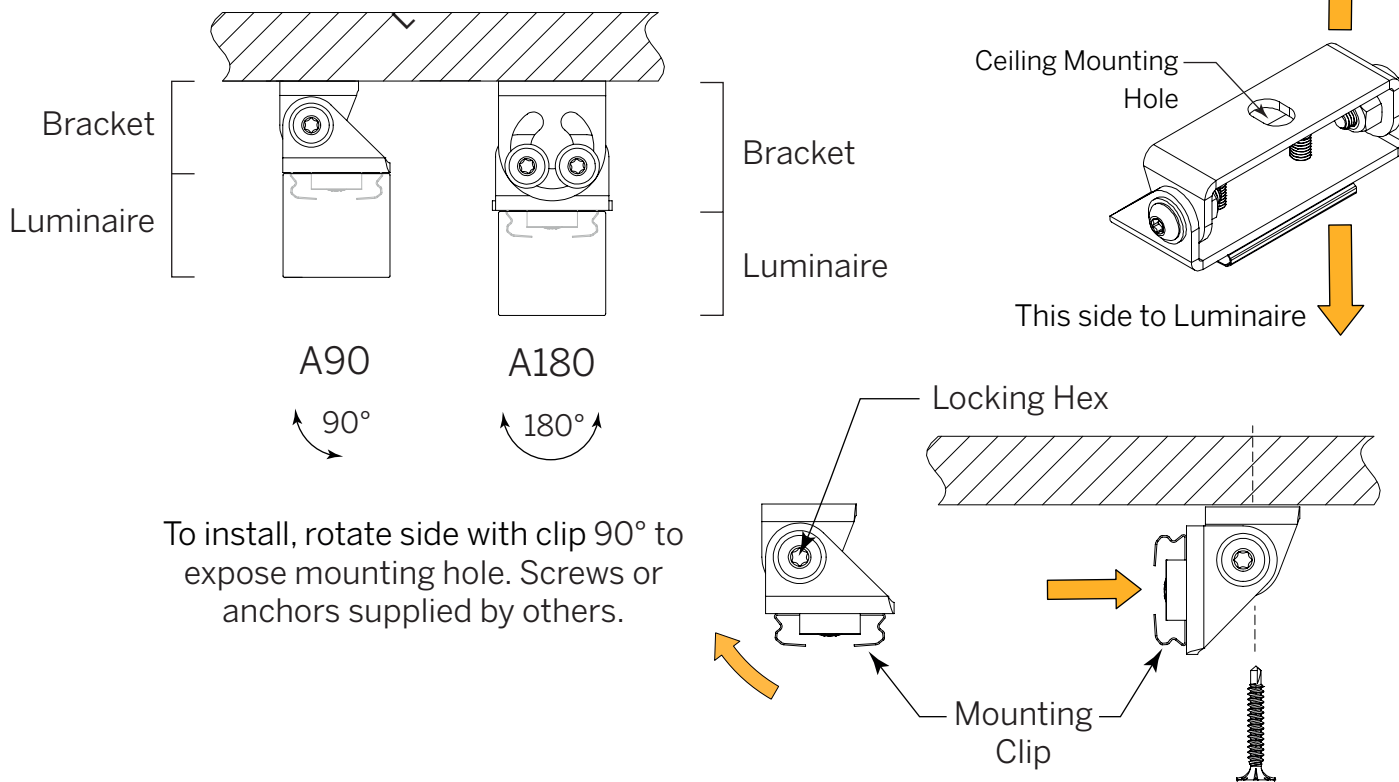
**Magnet Mount (MM)**

To mount to steel surface, the magnet mount can be used. Minimum (2) magnets per fixture, maximum offset 24" on center.



Need
Help?

Installation Instructions

Adjustable Bracket (A90/A180)**Step 5 - Mounting**

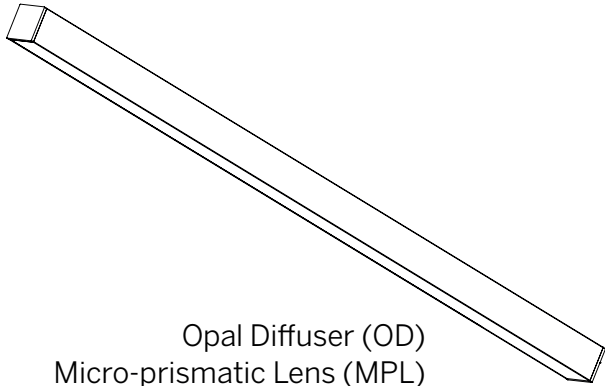
Gently push luminaire onto clips, or onto ferrous metal surface, in the case of magnet mounts.

Step 6 - Wiring

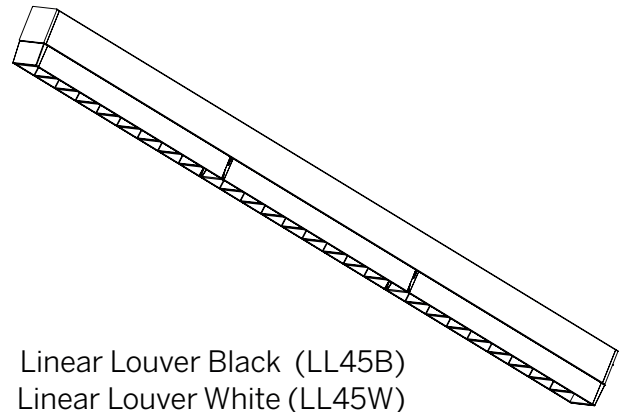
Gently push luminaire up onto clips, or onto ferrous metal surface, in the case of magnet mounts.

Need
Help?

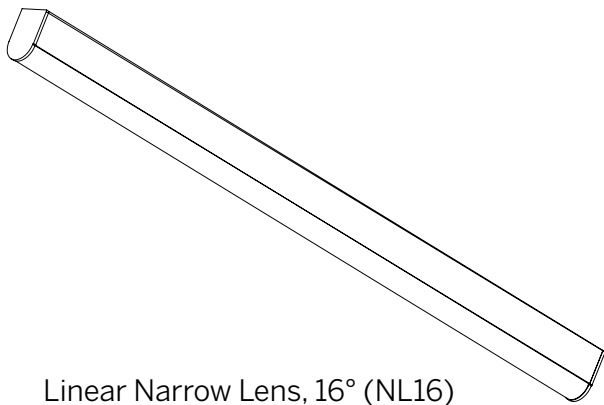
Lens Options



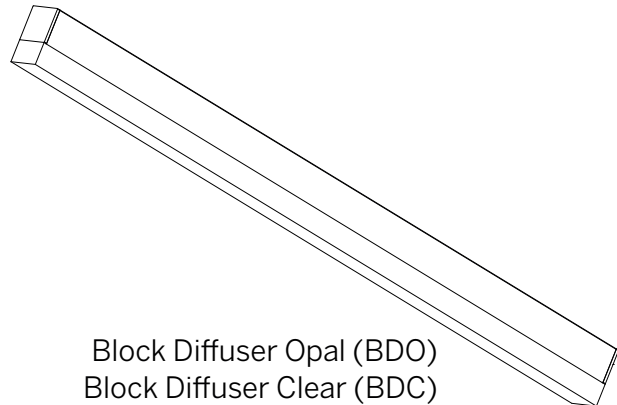
Opal Diffuser (OD)
Micro-prismatic Lens (MPL)



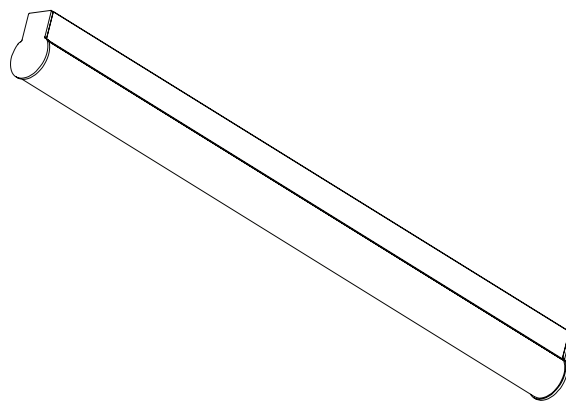
Linear Louver Black (LL45B)
Linear Louver White (LL45W)



Linear Narrow Lens, 16° (NL16)



Block Diffuser Opal (BDO)
Block Diffuser Clear (BDC)



Round Opal Diffuser (ROD)

Need
Help?