

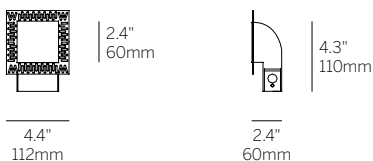
2.4" Square Ceiling / Floor Wash



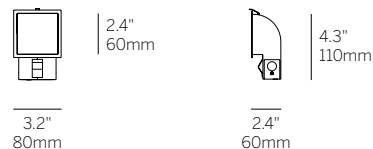
Recessed Plaster Trim



Recessed Bezel Trim



Recessed Plaster Trim (RPT)



Recessed Bezel Trim (RBT)

cut-out dimensions 2 3/4" x 2 3/4"

Ordering Information

Model	Fixation	Power ¹	CRI/CCT ²	Driver ³	Finish	Options
WG-60SCFW	RPT RBT	L	927 930 935 940	X S S010 SPH D010 PEQO	W (std)	EM

Luminaire

- Bezel Trim or Plaster Trim 2.4" ceiling or floor washer for drywall.
- Installation from room side of the wall for remodel or new construction.
- 'Easy click' tool free installation of diecast aluminum lamp insert module.
- Heavy gauge steel trim housing.
- L70 (TM21 Projected 85C) 66,500 hours.
- ETL and ETL-C for dry and damp location.

Fixation

- RPT = Recessed plaster trim
- RBT = Recessed bezel trim

Power¹

- L = Low Power, 5.6W @ 350mA

CRI/CCT (90+ CRI)²

- 927 = 2700K
- 930 = 3000K
- 935 = 3500K
- 940 = 4000K

Power Supply (remote only)³

- X = No driver
- S = Standard non-dim driver, 120-277V
- S010 = 0-10V >10% dimming, 120-277V
- SPH = Standard Phase Dimming, 120VAC
- D010 = EldoLED, 1%, 0-10V dimming, 120-277V
- PEQO = Lutron Hi-lume Premier 0.1% EcoSystem, 120-277V

Finish

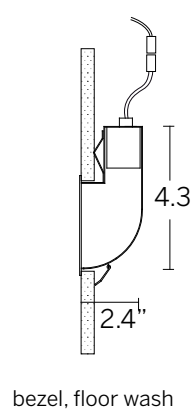
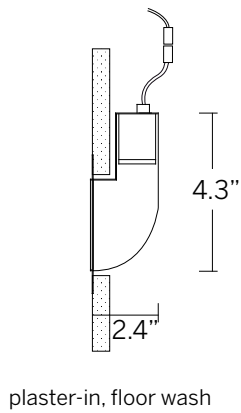
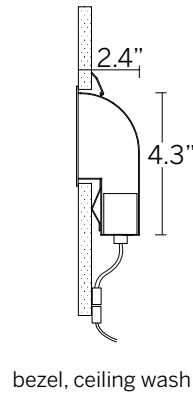
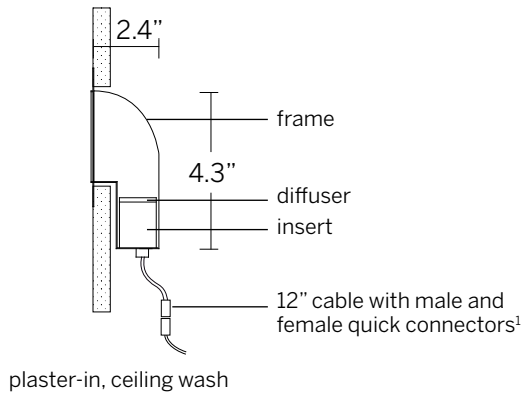
- W = White, 15% gloss, Tiger Drylac 49/11350

Options

- EM = Emergency (remote)

- 1 Wattage shown does not include power supplies/drivers. System wattage adds 10-20%, dependent upon driver selection.
- 2 See photometric data sheet for delivered lumens.
- 3 Refer to power supply page for details.

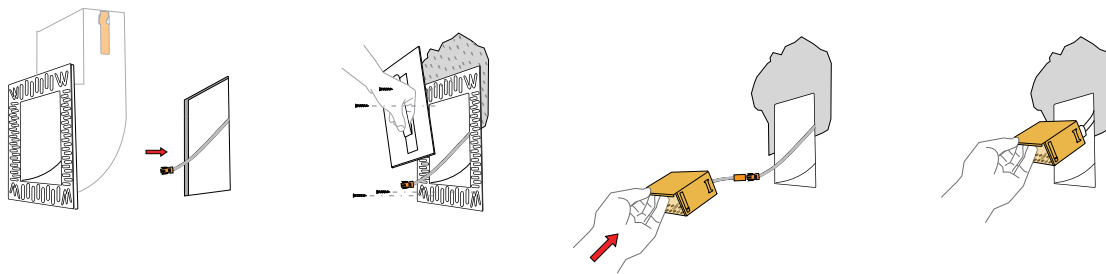
2.4" Square Ceiling / Floor Wash



cut-out dimensions 2 3/4" x 2 3/4"

¹Connectors included. Class II low voltage wire supplied by others. See power supply page for details.

Plaster-in instructions



Bezel instructions

