

2.4" Square Ceiling / Floor Wash



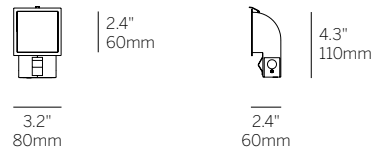
Recessed Plaster Trim



Recessed Bezel Trim



Recessed Plaster Trim (RPT)



Recessed Bezel Trim (RBT)

cut-out dimensions 2 3/4" x 2 3/4"

Ordering Information

WG-60SCFW		L			W	
Model	Fixation	Power ¹	CRI/CCT ²	Driver ³	Finish	Options
WG-60SCFW	RPT RBT	L	927 930 935 940	X S S010 SPH D010 PEQ0 DFPN	W (std)	EM

Luminaire

- Bezel Trim or Plaster Trim 2.4" ceiling or floor washer for drywall.
- Installation from room side of the wall for remodel or new construction.
- 'Easy click' tool free installation of diecast aluminum lamp insert module.
- Heavy gauge steel trim housing.
- L70 (TM21 Projected 85C) 66,500 hours.
- ETL and ETL-C for dry and damp location.

Fixation

- RPT = Recessed plaster trim
- RBT = Recessed bezel trim

Power¹

- L = Low Power, 5.8W @ 350mA

CRI/CCT (90+ CRI)²

- 927 = 2700K
- 930 = 3000K
- 935 = 3500K
- 940 = 4000K

Power Supply (remote only)³

- X = No driver
- S = Standard non-dim driver, 120-277V
- S010 = 0-10V >10% dimming, 120-277V
- SPH = Standard Phase Dimming, 120VAC
- D010 = EidoLED, 1%, 0-10V dimming, 120-277V
- PEQ0 = Lutron Hi-lume Premier 0.1% EcoSystem, 120-277V
- DFPN = Lutron Forward Phase 1% 120VAC

Finish

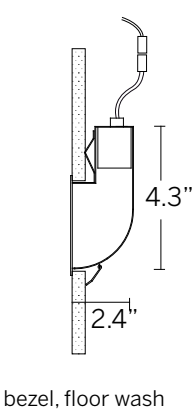
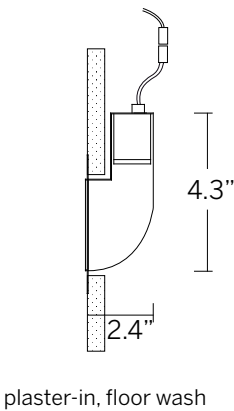
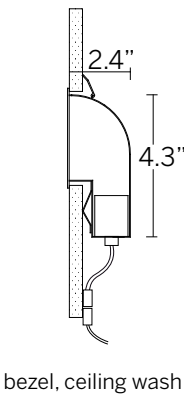
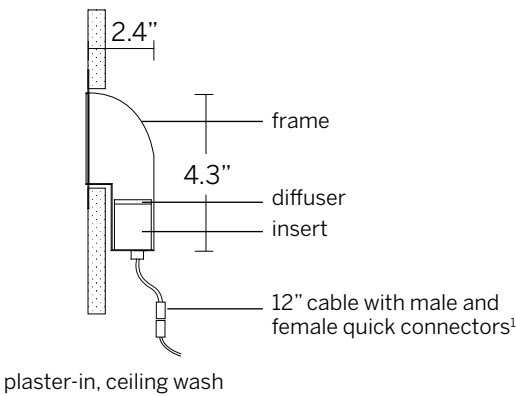
- W = White, 15% gloss, Tiger Drylac 49/11350

Options

- EM = Emergency (remote)

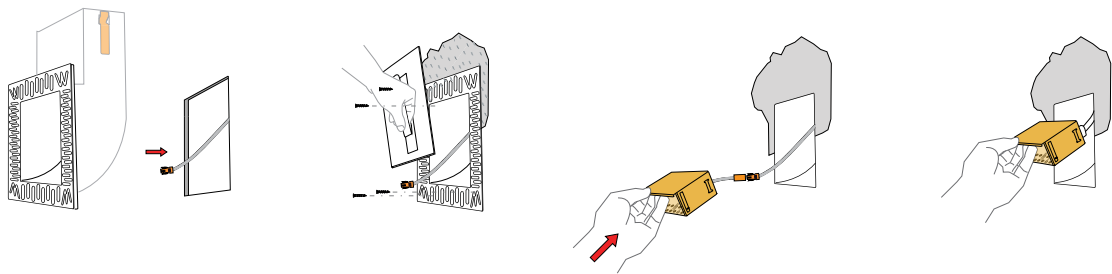
- 1 Wattage shown does not include power supplies/drivers.
- 2 See photometric data sheet for delivered lumens.
- 3 Refer to power supply page for details.

2.4" Square Ceiling / Floor Wash

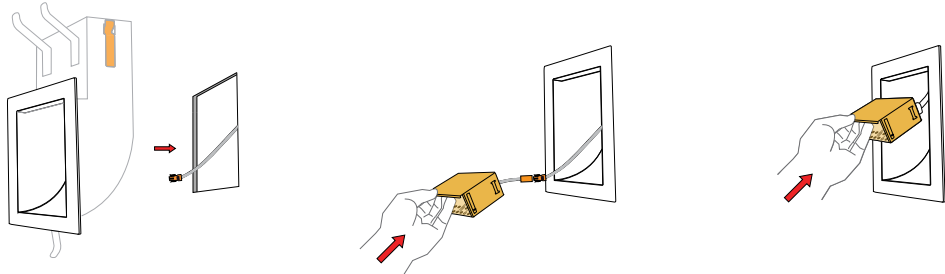


cut-out dimensions 2 3/4" x 2 3/4"
¹Connectors included. Class II low voltage wire supplied by others. See power supply page for details.

Plaster-in instructions



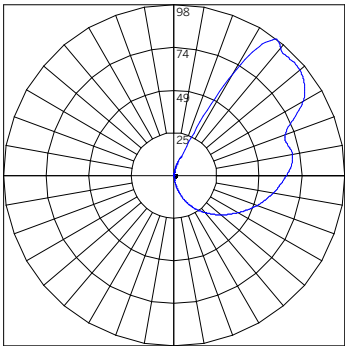
Bezel instructions



2.4" Square Ceiling / Floor Wash



DELIVERED LUMENS PER FOOT WG-60SCFW-...-L-...-W				
		Power		
		L [5.8 W]	M	H
CCT	927	173	-	-
	930	173	-	-
	935	186	-	-
	940	199	-	-
CCT Multiplier				
		927	930	935
		0.93	0.93	1.00
		0.93	0.93	1.07
UGR**				
40.4				



BEAM ANGLE (0-180) = 180.4
BEAM ANGLE (90-270) = 93

ILLUMINANCE - LOW POWER 3500K WG-60SCFW-...-L-935-...-W*		
Offset Distance [ft]	Illuminance [fc at max cd]	Beam Width [ft]
2	25	15.1
4	6	30.3
6	3	45.4
8	2	60.6
10	1	75.7
12	1	90.9
14	1	106
16	0	121.2
18	0	136.3
20	0	151.5

*Polar Plot and Cone of Light are applicable to part number noted; use Multiplication Factor table to approximate other models or refer to online photometry.
**UGR value noted is the maximum UGR (crosswise) with 935 LEDs at noted Power level.