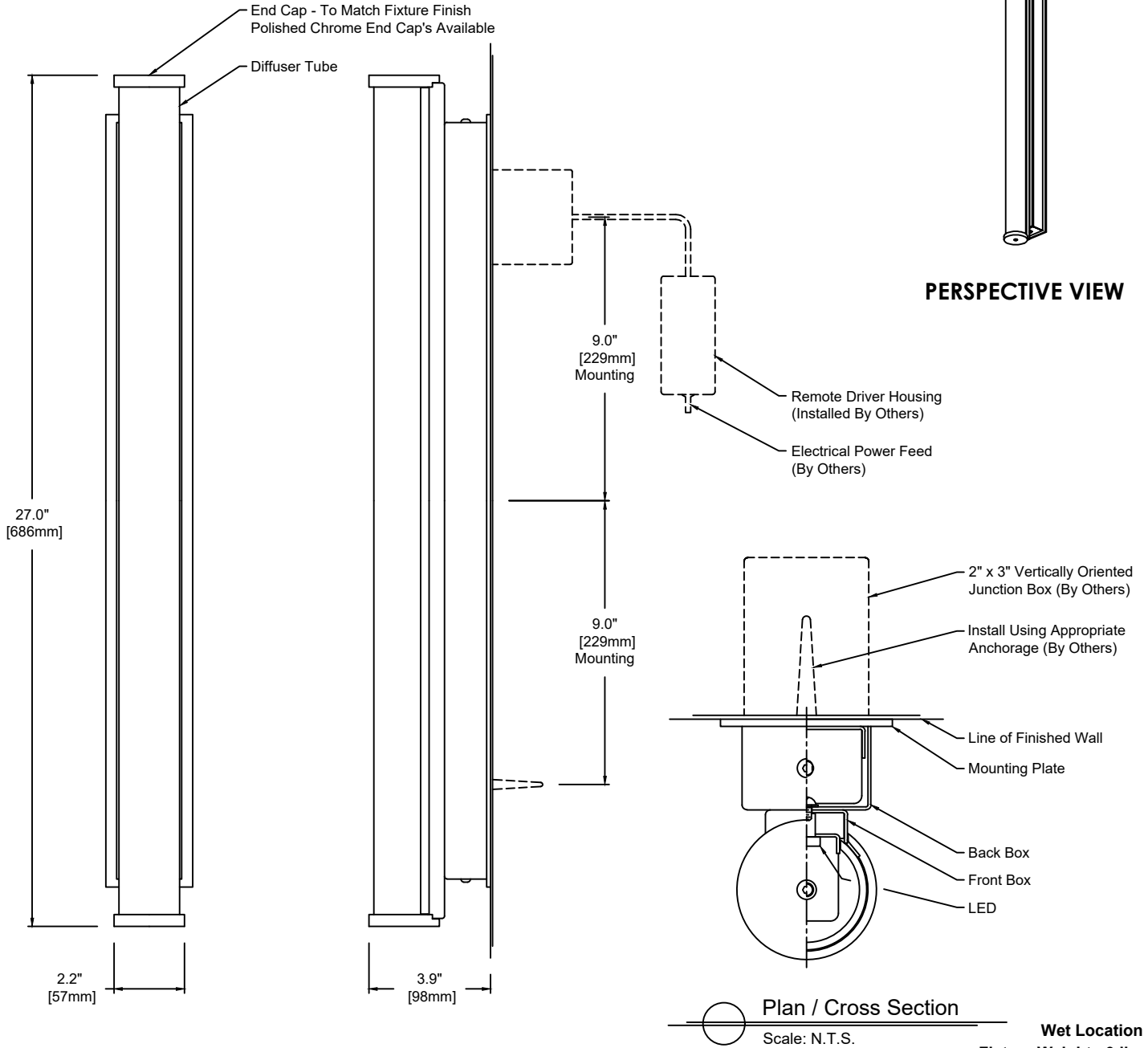


Sigma - Outdoor

TECHNICAL SHEET



1740WL	W	27	M	830	U	S	SA	19	-
Model	Type	Size	Wattage	Color Temp	Voltage	Control	Diffuser	Finish	Options
W - Wall	27"	M	830 - 3,000K 835 - 3,500K 840 - 4,000K	1 - 120 VAC only U - 120/277 V	S D010 DFPN L3DAE L3D0E	SA - Satin Clear Acrylic	19 - Painted Anodized Aluminum - RAL 9006 Matte 21 - Painted White - RAL 9010 Matte 22 - Painted Custom Color	EC - Chrome End Caps	

Wattage and Control

Control (Remote 24V):
S - Non-Dim
D010 - 0-10V 10%
DFPN - Lutron Forward Phase 1%, 120VAC
L3DAE - Lutron Hi-Lume 1% EcoSystem
L3D0E - Lutron Hi-Lume Premier 0.1% EcoSystem

Wattage "M" - 10 Watt
3,000K - 750 lm
3,500K - 810 lm
4,000K - 840 lm

Technical Data:
Form - linear (tape), Operating voltage: 24VDC
Color rendering index Ra min: 80 CRI
Viewing angle: 120°
Lifetime - L70: 50,000h
IP67 rated for outdoor use
Working temperature: -20°C to 50°C (-4°F to 122°F)

Remote Drivers:
Max. wiring distance / Load

	Osram		Lutron		
Wire Gauge	≤48W	≤72W	≤96W	≤40W	≤96W
#18AWG	37'	25'	18'	15'	25'
#16AWG	59'	39'	29'	25'	40'
#14AWG	95'	63'	47'	40'	60'

