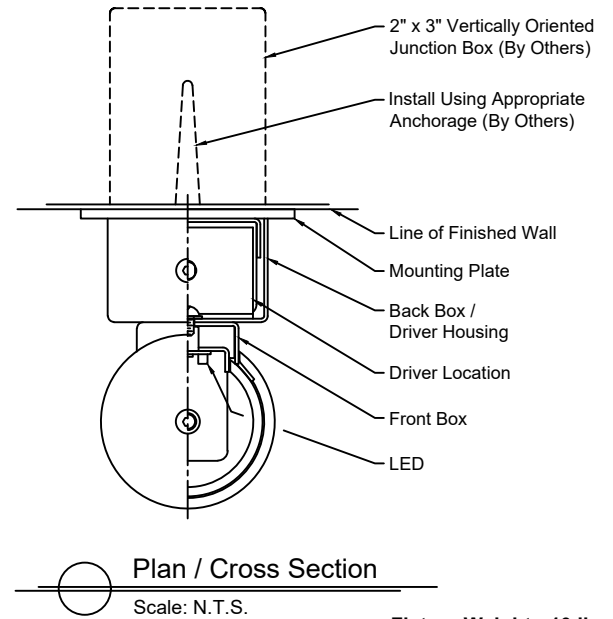
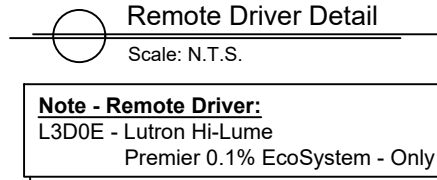
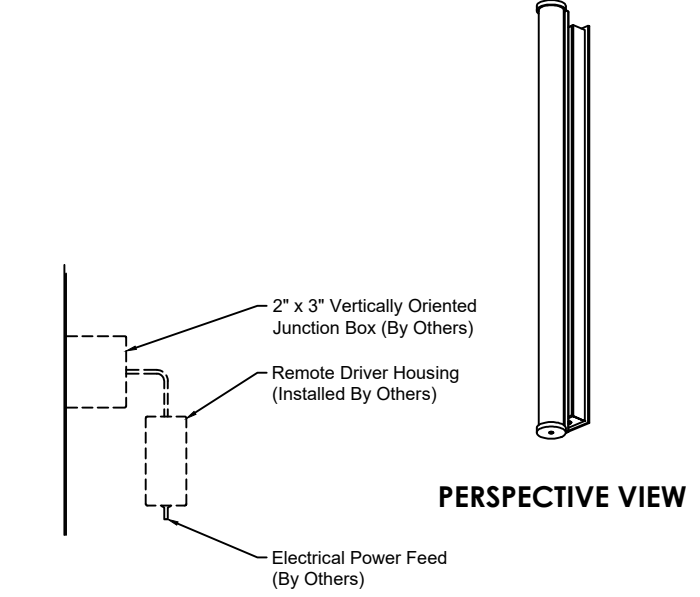
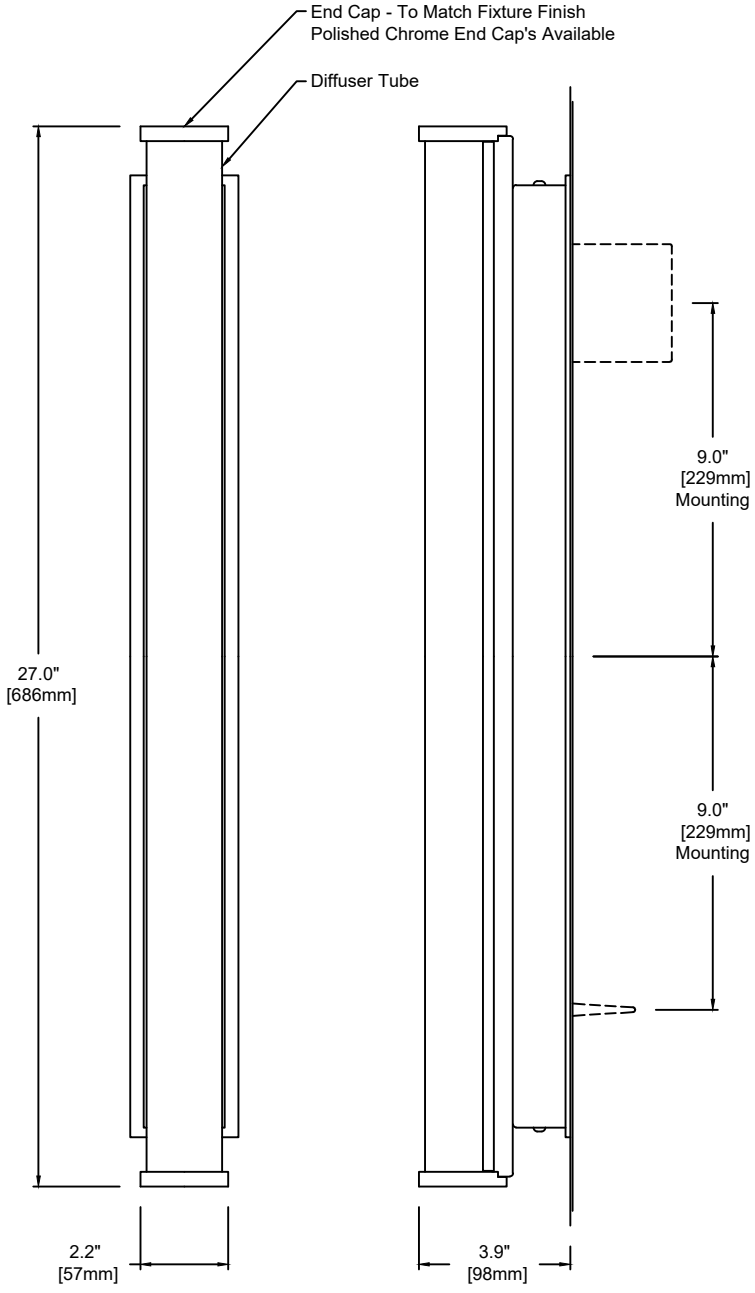


# Sigma - Indoor

## TECHNICAL SHEET



**Fixture Weight : 10 lbs**

1740	W	27	M	830	U	S	SA	19	-
<b>Model</b>	<b>Type</b>	<b>Size</b>	<b>Wattage</b>	<b>Color Temp</b>	<b>Voltage</b>	<b>Control</b>	<b>Diffuser</b>	<b>Finish</b>	<b>Options</b>
W - Wall	27"	L M H	827 - 2,700K 830 - 3,000K 835 - 3,500K 840 - 4,000K	1 - 120 VAC only U - 120/277 V	S D010 DFPN L3DAE L3D0E	SA - Satin Clear Acrylic	19 - Painted Anodized Aluminum - RAL 9006 Matte 21 - Painted White - RAL 9010 Matte 22 - Painted Custom Color	EC - Chrome End Caps	

**Wattage and Control**

Control (Integral): S - Non-Dim D010 - 0-10V 10% DFPN - Lutron Forward Phase 1%, 120VAC L3DAE - Lutron Hi-Lume 1% EcoSystem	Wattage "L" - 6 Watt 2,700K - 800 lm 3,000K - 800 lm 3,500K - 832 lm 4,000K - 848 lm	Wattage "H" - 20 Watt 2,700K - 2,348 lm 3,000K - 2,348 lm 3,500K - 2,444 lm 4,000K - 2,492 lm	Remote Driver: Max. wiring distance / Load Lutron Wire Gauge ≤96W #18AWG 25' #16AWG 40' #14AWG 60'
Control (Remote 24V): L3D0E - Lutron Hi-Lume Premier 0.1% EcoSystem	Wattage "M" - 12 Watt 2,700K - 1,486 lm 3,000K - 1,486 lm 3,500K - 1,548 lm 4,000K - 1,578 lm	Technical Data: Form - linear, Operating voltage: 24VDC Color rendering index Ra min: 82 CRI, Available in 90 CRI Viewing angle: 110° Lifetime - L70: 60,000h Working temperature: -20°C to 60°C (-4°F to 140°F)	

