




exterior linear



exterior linear contents

 click images to open product pages

Archiline 6



Archiline_F
Length
13/20/39"
12 W/ft
136 lm/W*



Archiline_I
Length
15/22/42"
12 W/ft
136 lm/W*

Xenia 10



Xenia_W
Length
14/25/37/48/60"
7 W/ft
121 lm/W*

Paseo 12



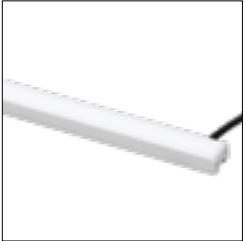
Paseo_L
Length
20/45/57"
6 W/ft
109 lm/W*

Intake 14



Intake_L
Length
13/24"
6 W/ft
112 lm/W*

Thin66 19



Thin66
Length
22/42/61/81"
3.6 W/ft
73 lm/W**



Archiline_F Anti-glare
Length
13/20/39"
12 W/ft
140 lm/W*



Archiline_I Anti-glare
Length
15/22/42"
12 W/ft
140 lm/W*



Xenia_W Pro
Length
14/25/37/48/60"
8 W/ft
112 lm/W*

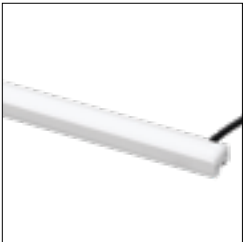


Paseo_L Anti-glare
Length
20/45"
6 W/ft
109 lm/W*

Dirigo 15



Dirigo
Length
40"
14 W/ft
100 lm/W**



Thin66 RGBW
Length
22/42/61/81"
3.6 W/ft



Archiline_FL
Length
13/20/39"
4 W/ft
138 lm/W*



Archiline_W
Length
13/24/36/48/60"
12 W/ft
126 lm/W*



Xenia_A
Length
14/24/36/48/60"
7 W/ft
123 lm/W*



Paseo_L RGBW
Length
20/45/57"
6 W/ft

Ice-Cut66 18



Ice-Cut66
Length
21/41/60"
6 W/ft
73 lm/W*



Archiline_A
Length
15/22/41/61"
12 W/ft
122 lm/W*



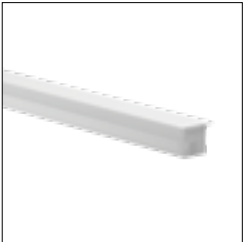
Archiline_W Anti-glare
Length
13/24/36/48"
12 W/ft
140 lm/W*



Xenia_A Pro
Length
14/24/36/48/60"
8 W/ft
129 lm/W*



Paseo_X
Length
23/45"
7 W/ft
131 lm/W*



Ice-Cut66_F
Length
21/41/60"
6 W/ft
73 lm/W**



Archiline_A Anti-glare
Length
15/22/41"
12 W/ft
140 lm/W*



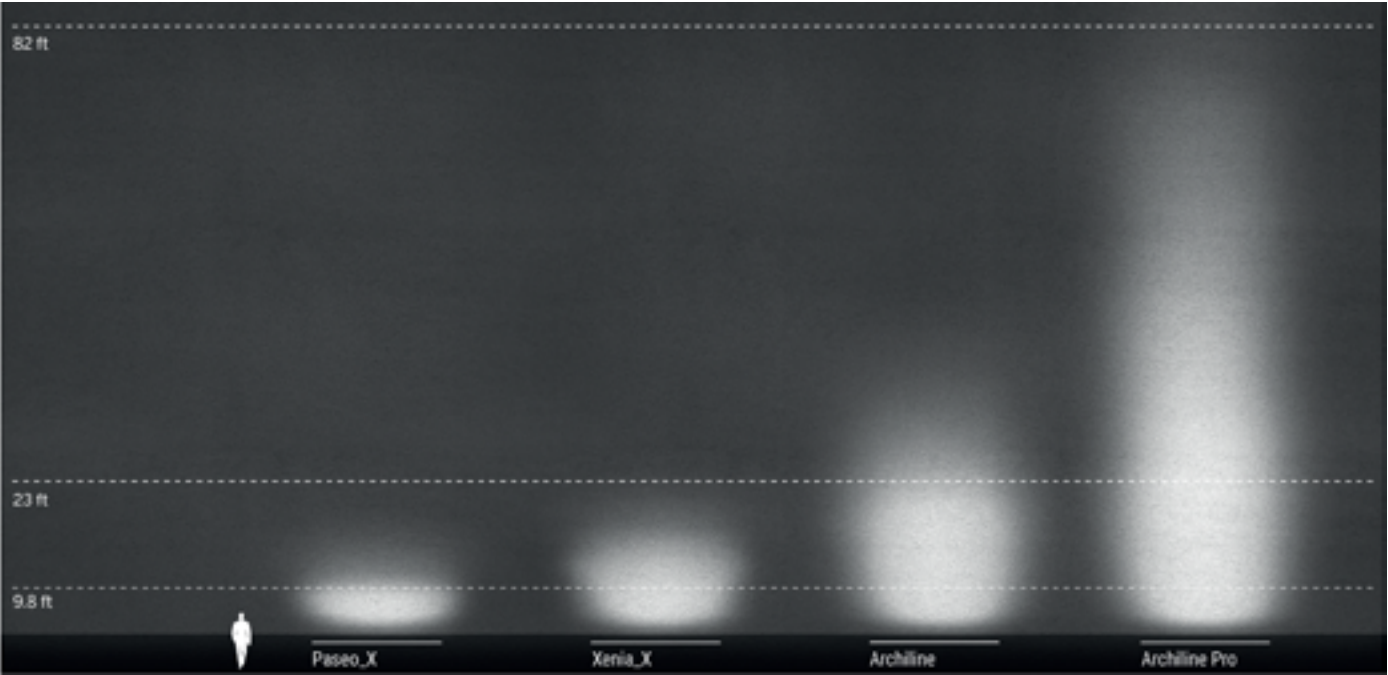
Archiline_W RGBW
Length
13/24/36/48"
12 W/ft



Paseo_X RGBW
Length
23/45"
8 W/ft

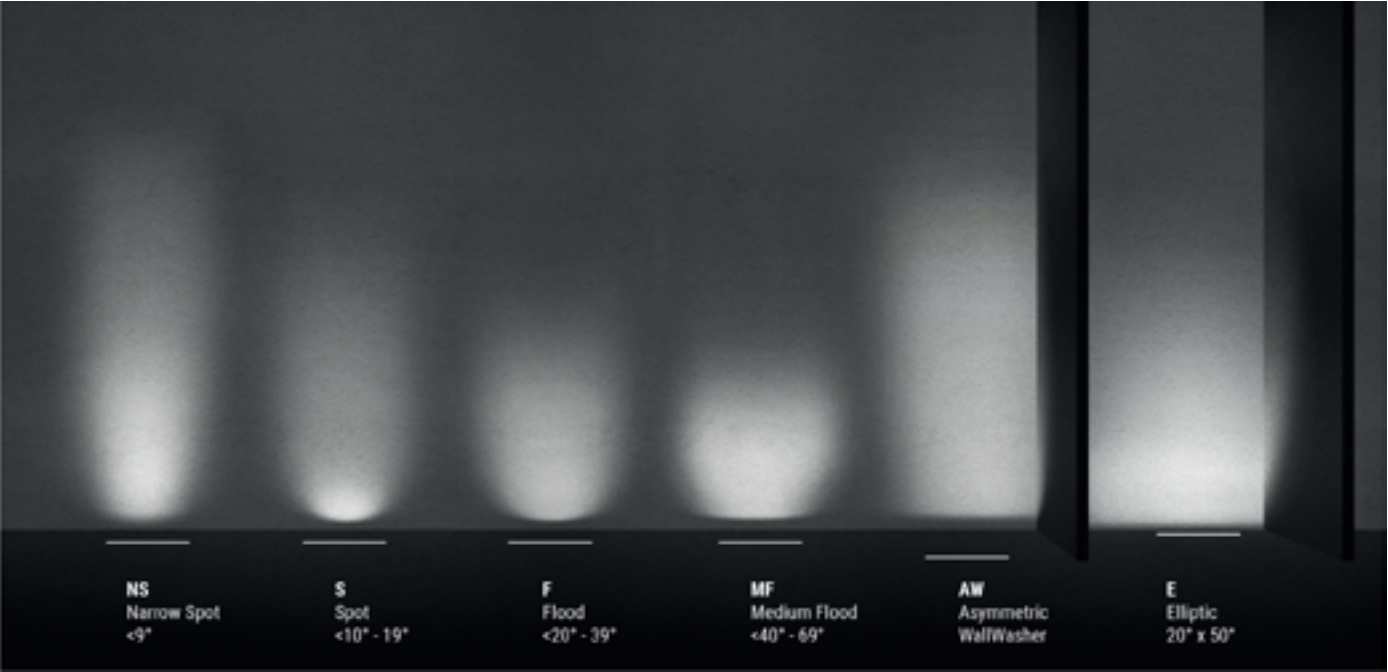
*Source lumens shown for 3500K **Source lumens shown for 3000K

exterior linear range



Performance for every need

Each family of lights includes different outputs to meet the largest possible range of requirements. Paseo, Xenia, Archiline and Archiline PRO offer a particularly wide selection.



Optical range

The Linear Lights series offers specific products for every context, and lighting solutions that vary depending on the optics you choose. There are spots, narrow spots for small or very small angles, various floods, and diffuse and wall washer lights. The Elliptic 20°x50° gives an oval grazing wash for tall narrow walls, and Asymmetric provides a directional beam that washes the wall evenly.

Fire brigade museum | Riga, Latvia

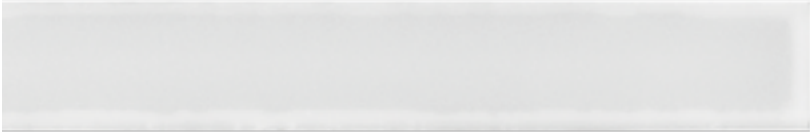


Archiline

Archiline_F



Archiline_FI



Archiline_A



Archiline_I



Archiline_W



Archiline_W Pro



ARCHILINE_F trimless with extra-clear 0.5-inch tempered glass and black screenprinted optical compartment, with or without darklight +RGBW. Designed for wall lighting, and can be placed in continuous lines.

ARCHILINE_FL trimless with extra-clear 0.5-inch tempered glass and white ceramic varnish, monochrome or RGBW versions. Designed for path marking in parks, squares, drives, and public spaces. Can be placed in continuous lines.

ARCHILINE_A 6060 aluminum alloy flange with extra-clear 0.5-inch tempered glass and black-screenprinted optical compartment, with or without darklight +RGBW. Designed for wall lighting.

ARCHILINE_I AISI 316L stainless steel flange with extra-clear 0.5-inch tempered glass and black-screenprinted optical compartment, with or without darklight +RGBW. Designed for wall lighting.

ARCHILINE_W The surface mount and wall mount is made from 6060 aluminum extrusion with 10-micron anodized protective finish. The adjustable brackets are made from graduated stainless steel. Features maximum glare control and multiple optics

ARCHILINE_W Pro The Pro version features the same light glare control in high output white and RGBW for illuminating wall heights up to 160 feet.

Parliament Building | Muscat, Oman



Archiline range

	Archiline_F 12.6 - 39.4 in 13/20/40 W	Archiline_F Anti-glare 12.6 - 39.4 in 12/20/40 W	Archiline_FL 12.6 - 39.4 in 3.5/6/12 W	Archiline_A 14.6 - 41.4 in 13/20/40/59 W	Archiline_A Anti-glare 14.6 - 41.4 in 12/20/40 W	Archiline_I 14.8/22.2/41.5 in 13/20/40 W	Archiline_I Anti-glare 14.8 - 41.9 in 14.8/22.2/41.5 W
powerLED	2700K 3000K 3500K 4000K RGBW	2700K 3000K 3500K 4000K	2700K 3000K 3500K 4000K RGBW	2700K 3000K 3500K 4000K RGBW	2700K 3000K 3500K 4000K	2700K 3000K 3500K 4000K RGBW	2700K 3000K 3500K 4000K
Optics	Narrow S. Spot Medium Fl. Flood Elliptic Asymmetric	Spot Medium Fl. Flood Elliptic	General	Narrow S. Spot Medium Fl. Flood Elliptic Asymmetric	Spot Medium Fl. Flood Elliptic	Narrow S. Spot Medium Fl. Flood Elliptic Asymmetric	Spot Medium Fl. Flood Elliptic
Driver	120/277V 0-10V	120/277V 0-10V	120/277V 0-10V	120/277V 0-10V	120/277V 0-10V	120/277V 0-10V	120/277V 0-10V

High-quality construction

Archiline bodies are made from extruded 6060 aluminum alloy Anodized to 10 microns.

These two processes provide superior passive heat dissipation and, most importantly, higher corrosion resistance.

The caps are diecast.

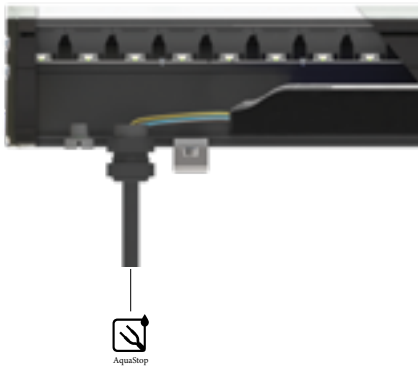
IP67



Safety systems

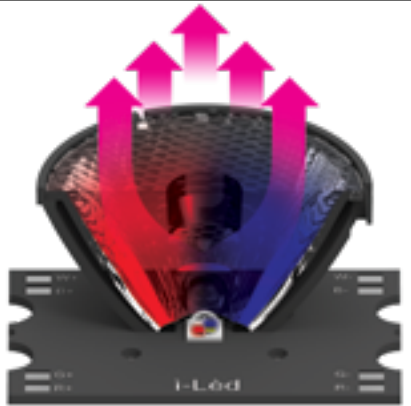
We have developed a variety of corrosion protection technology to maximize the lifespan of our lights.

They also have overtension and electrical discharge protection, TCS® to shield their circuits from moisture, and AquaStop® water protection.



The perfect mix

Combined-optic RGBW technology makes color mixing better and more uniform. This takes place within the optics, using treated lenses optimized for maximum efficiency and high-performance RGBW LEDs. One diode combines pure warm or natural white and red, green and blue, mixing the colors better than traditional systems and creating an infinite variety of shades, as well as obtaining pure mwhite without the influence of the RGB. The optical compartment is screenprinted in black, with dark-light screening giving perfect control over glare, sectioning the beam to eliminate the direct outward component and lighting only the wall.



Archiline_W range

	Archiline_W 12.6 - 48 in 13/24/37.5/ 48.5 W	Archiline_W Anti-glare 12.6 - 48 in 12/24/36/48.5 W	Archiline_W RGBW 12.6 - 48 in 13/26/40/53 W	Archiline Pro_W 14 in 31.8 W	Archiline Pro_W RGBW 14 - 40 in 25.5/38/76.3 W
powerLED	3000K 3500K 4000K	3000K 3500K 4000K	RGBW+W RGBW+N	2700K 3000K 3500K 4000K	RGBW+W RGBW+N
Optics	Narrow Spot Spot Medium Flood Flood Elliptic Asymmetric	Spot Medium Flood Flood Elliptic	Spot Medium Flood Flood Elliptic Asymmetric	Spot Flood Elliptic Narrow Spot	Spot Medium Flood Flood Elliptic Narrow Spot
Driver	120/277V 0-10V	120/277V 0-10V	120/277V + DMX	120/277V 0-10V	120/277V + DMX

Optics

The Archiline range has optics for every type of design need.

SPOT and NARROW SPOT for accent lighting

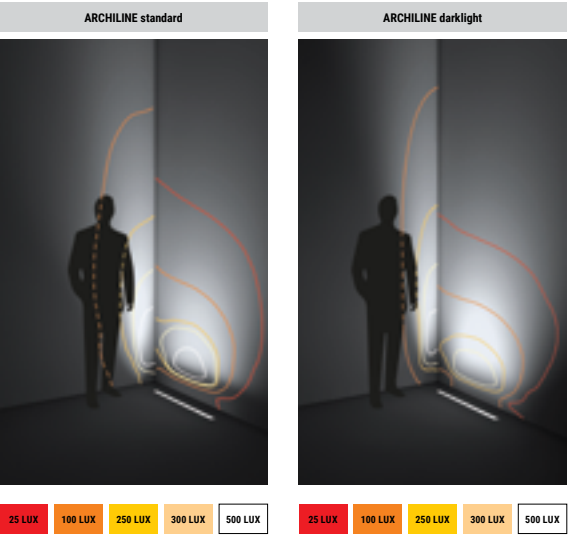
FLOOD and MEDIUM FLOOD for soft lighting of parts of walls

ELLIPTIC 20°x50°, which projects an oval beam, ideal for grazing illumination of high and narrow walls

ASYMMETRIC for a wallwasher effect.

Other features:
Darklight versions, which section the beam by eliminating the direct component to the exterior and lighting only the wall.

Ability to create continuous lines without affecting the evenness of the light near the ends of each module. In the Archiline_F no-darklight versions, the diodes are arranged so as to maintain the same distance between each one, and between the last ones at each end.



College Place d'Armes | Yverdon-les-Bains, Switzerland



Xenia

The new Xenia family comprises a very wide range of linear lights, with numerous configurations for every lighting need. They provide a high-performance solution for lighting professionals, offering reliable safety technology including OVP, ESD, TCS® and AquaStop®. There is also a wide choice of topLED and powerLED outputs, and optics. The range is available in warm white, natural white, and RGBW versions.

IP66



Xenia_W



Xenia_W



Xenia_W Pro

Via Broletto, ESA engineering | Milan, Italy



Xenia range

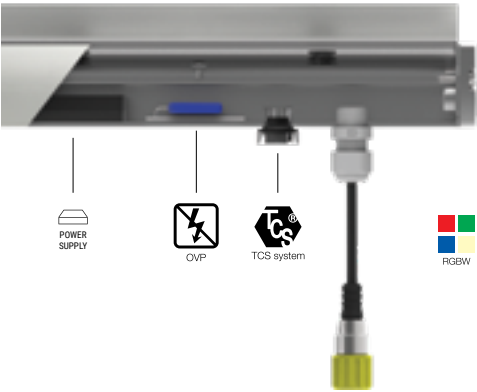
	Xenia_W	Xenia_W Pro	Xenia_A	Xenia_AL	Xenia_A Pro
	14.4 - 60.2 in 6.5/13/20/26/33 W	20.2 - 57.2 in 8/15/23/32/37 W	14.1 - 59.8 in 6.5/13/20/26/33 W	14.1 - 59.8 in 2/3.5/5.5/7/9 W	14.1 - 59.8 in 8/15/23/32/37 W
topLED	2700K 3000K 3500K 4000K RGBW+W RGBW+N	-	2700K 3000K 3500K 4000K RGBW+W RGBW+N	2700K 3000K 3500K 4000K	-
powerLED	-	2700K 3000K 3500K 4000K RGBW(3K) RGBW(4K)	-	-	2700K 3000K 3500K 4000K RGBW(3K) RGBW(4K)
Optics	Narrow Flood Flood Wide Flood Asymmetric General	Narrow Spot Narrow Flood Flood Wide Flood Elliptic Asymmetric	Narrow Flood Flood Wide Flood Asymmetric	General	Narrow Spot Narrow Flood Flood Wide Flood Elliptic Asymmetric
Remote Driver	24V	-	24V 24V + DMX (RGBW)	24V	-
Integral Driver	120V On/Off	120V On/Off 120V + DMX (RGBW)	120V + DMX (RGBW)		120V On/Off 120V + DMX (RGBW)

High-quality construction

Xenia is made from very high-quality materials and components. Because of the ways in which they are used, these lights must be durable and able to maintain their performance in temperatures ranging from a glacial -20°C to a sultry +60°C. They are also highly corrosion resistant, thanks to their use of 6060 aluminum alloy and 10-micron anodization.

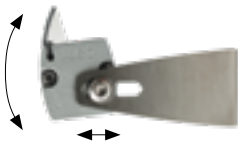
Safety systems

We have developed a variety of corrosion protection technology to maximize the lifespan of our lights. They also have overvoltage and electrical discharge protection, TCS® to protect their circuits from moisture.



Wall-mounted versions

- Multiple fixing sizes for made-to measure grazing installations
- Graduated body rotation
- Anti-glare shield
- Five sizes, from 14.2 to 59.1 inch
- Optics: Flood, Narrow Flood , Wide Flood, Asymmetric, General



Recessed versions

- Extra-thin housing: frame only 0.1 inch □
- Housing has no end caps, so multiple lights can be positioned in series to create continuous lines.
- The end cap can then be placed at the end of the run and adapted to the housing so that the whole of the body is enclosed.
- Five sizes, from 14.2 to 59.1 inch
- Optics: Flood, Narrow Flood, Wide Flood, Asymmetric, General



Paseo



Paseo_L General



Paseo_L Anti-glare



Paseo_L RGBW



Paseo_X



Paseo_RGBW

Paseo is a highly functional and versatile range of lights. Paseo_L, with a topLED source and antiglare and RGBW versions, is designed for architectural illumination. It has a range of optics, from flood to asymmetric and diffuse. Paseo_X has a powerLED source for high-output illumination, and and is available with flood, medium flood, asymmetric, elliptic and diffuse optics and a wide selection of control options in the standard and RGBW versions.

IP67



Agemar | Athens, Greece

Paseo range

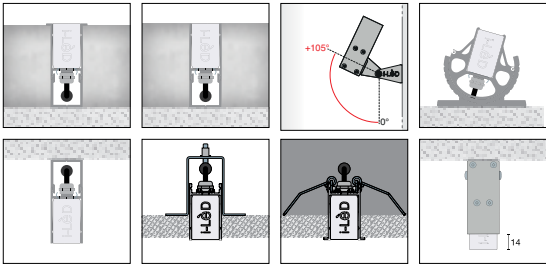
	Paseo_L 20.2 - 57.2 in 6/13/19 W	Paseo_L Anti-glare 20.2 - 57.2 in 6/13/19 W	Paseo_L RGBW 20.2 - 57.2 in 6/13/19 W	Paseo_X 20.2 - 57.2 in 7.5/15 W	Paseo_X RGBW 20.2 - 57.2 in 7.5/15 W
topLED	2700K 3000K 3500K 4000K	2700K 3000K 3500K 4000K	RGBW	-	-
powerLED	-	-	-	2700K 3000K 3500K 4000K	RGBW+W
Optics	Medium Flood Asymmetric General	Medium Flood Asymmetric	General	Narrow Spot Spot MediumFlood Flood Elliptic Asymmetric General	Elliptic
Remote Driver	24V	24V	24V + DMX	-	-
Integral Driver	120V On/Off	120V On/Off	-	120V On/Off 120V + 0-10V	120V + DMX

Minimal size

The new Paseo models are even thinner and more versatile, with heights of 0.9 to 1.5 inch that adapt easily to any design need. Their very small size is combined with simple, minimalist aesthetics.



The Paseo range comes with a wide choice of optics, lengths, color temperatures, and controls. These include 0-10V, and RGBW DMX and RGB pixel for dynamic lighting management and spectacular architectural illumination. The housings and numerous accessories mean Paseo can be recessed or fitted to a wall, ceiling or floor.



Maximum protection

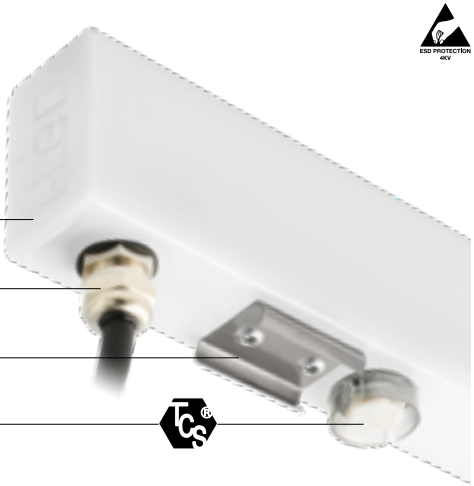
An electrostatic discharge occurs when there's a transfer of charges between two bodies that are close or in contact with each other. This often damages electronics and LED modules. Paseo fixtures with integral drivers come with an up to 4KV electrostatic discharge (ESD) protection.

Ultrasonic-welded caps offer perfect mechanical resistance and light continuity

Thermoplastic PUR cables with IP67 4 pin or 5-pin M12 quick-connectors

Steel spring clips allow you to easily install the Paseo profile into the outer casing

TCS® valve, to avoid the formation of humidity in the profile 4KV electrostatic discharge (ESD) protection.



Intake

The Intake linear path marker is available with two optics, diffuse and asymmetric. The first highlights obstacles and illuminates specific areas, while the second brings out the depth of the walkable area or lighted object, and is perfect for footpaths, parking areas, and low walls.



IP66

range

	TopLED	Optics	Remote Driver	Integral Driver
Intake_L 13.1 -24.4 in / 6/12 W	3000K 4000K	General Asymmetric	24V	120V On/Off



Dirigo

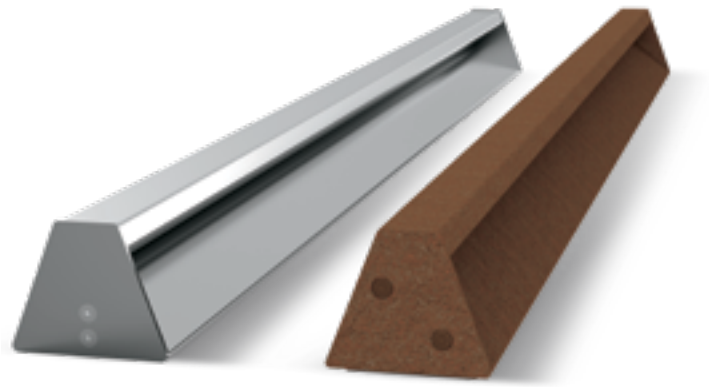
The Dirigo series is a new lighting concept for outdoor spaces. Available as single elements or modules to create continuous lines, it is a ground profile designed to illuminate walkways and other foot traffic areas, and be placed along paths and walls to mark out routes. It can be safely walked on, and its distinctive and award-winning design features a hidden light source that creates controlled, ground-hugging and glare-free illumination.

316L Stainless steel or aluminum construction with black, gray or cor-ten like finish standard.

IP66

range

	StripLED	Optics	Remote Driver	Integral Driver
Dirigo_FL1 Steel 40 in / 14.4 W	3000K/4000K	General	24V	-
Dirigo_FL2 Aluminum 40 in / 14.4 W	3000K/4000K	General	24V	-



Dirigo_FL1 Steel
(40" Standalone)

Dirigo_FL2 Aluminum
(40" Standalone)

Dirigo_M1 Steel
(For continuous runs)

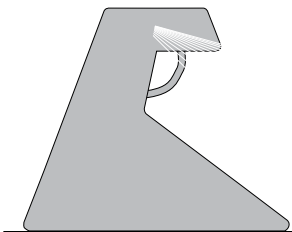
Dirigo_M2 Aluminum
(For continuous runs)



Dirigo

Grazing light

The internal Led source gradient was studied for the best lighting distribution, along the pathways.



Range

Dirigo is available as single module or prepared for continuous line installation.

Single module (L. 39.4 inch)

Sealed and complete source profile, end caps.

Continuous LED installation modules

Continuous LED strips up to 14 feet. Feeds from either end allow for 28 feet of continuous strips. Minimal light interruption when joining multiple units greater than 28 feet. Mechanical connection between profiles. Remote Driver 24VDC.



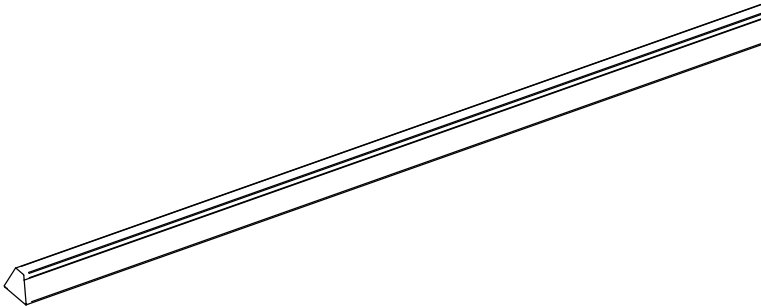
Complete element version

System

**Dirigo Profiles are not field cuttable. For any cut lengths, please consult the factory.

Robust design

The opposing level structure of Dirigo's single profile makes this appliance particularly sturdy and resistant. The absence of raw edges makes it ideal for public and private outdoor applications. Dirigo can be walked on and is extremely safe for users.



Ice-Cut66

Extremely slender at only 0.4 inch □, lightweight, and easy to install in any space, Ice-Cut66 can be used to create segmented light scenes or continuous lines, thanks to the cables exiting at the bottom of the light. This smart solution produces perfectly distributed intensity along the length of the light.

IP66



range

	TopLED	Optics	Remote Driver	Integral Driver
Ice-Cut66 20.9 - 60.3 in / 6/12/18 W	2700K 3000K 4000K	General	24V	-
Ice-Cut66_F 20.9 - 60.3 in / 6/12/18 W	2700K 3000K 4000K	General	24V	-



Thin66

Thin66 emphasizes the features of a building with its modern, minimalist profile. It can be installed on a wall or ceiling using the brackets or clips included. Equipped with IP66 quick cabling connectors, it is available with a dual cable (IN/OUT) with lateral output to create continuous line without disconnection between the bars. Also available in RGBW version.

IP66



range

	TopLED	Optics	Remote Driver	Integral Driver
Thin66 22.1 - 81.1 in / 6/12/18/24 W	2700K 3000K 4000K	General	24V	-
Thin66 RGBW 22.1 - 81.1 in / 6/12/18/24 W	RGBW(3K)	General	24V + DMX	-





inter•lux

inter-lux.com/linealight

linea
light
i-LÈD